

# Fresco

2<sup>nd</sup> EDITION

ADITYA ACADEMY OF ARCHITECTURE AND DESIGN



# CONTENT

	I	KEYNOTE (CHAIRMAN, PRINCIPAL)
EDITORIAL NOTE	II	
KEYNOTE (LITERARY CO-ORDINATORS)	III	KEYNOTE (LITERARY CO-ORDINATOR)
	IV	
AAAD PROPOSED NEW CAMPUS	V	AAAD FACILITIES
	VI	
OLFACTORY ARCHITECTURE	1	BURJ JUMEIRAH
	2	
PROFRSSION WITH A WRONG SHADOW	3	CHISEL AND SLICE
	4	
1ST YEAR SKETCHES	5	ARCHITUDE
	6	
CLASS PHOTO: 1ST YEAR	7	1ST YEAR DESIGN
	9	
MOVIE REVIEW	10	1ST YEAR PHOTOGRAPHY
	11	
JAZZING	12	WHEN THE INCOMPLETE TELLS A STORY
	13	
ORANGE SPELL	14	PHOTOGRAPHY
	15	
2ND YEAR SKETCHES	17	CLASS PHOTO: 2ND YEAR
	18	
2ND YEAR DESIGN	19	2ND YEAR PHOTOGRAPHY
	21	
JOURNEY TO NOWHERE	23	BOMBAY- MUMBAI
	24	
SOCIETY- A PARADOX WITHIN ITSELF	25	MUSIC
	26	

	27	POEMS
AI: A BOON OR A CURSE	29	
	30	CLASS PHOTO: 3RD YEAR
3RD YEAR DESIGN	33	
	35	3RD YEAR PHOTOGRAPHY
FASHION FALLACY	36	
	37	INDIAN CUISINE
AMATEUR IN BIOMIMICRY	39	
	40	BA SING SE
CARDBOARD PAVILLION	42	
	43	CLASS PHOTO 4TH YEAR
4TH YEAR PHOTOGRAPHY	44	
	45	4TH YEAR DESIGN
4TH YEAR SKETCHES	52	
	53	STEERING WHEELS TOWARDS HORIZONTAL LIVING
VIEW FROM THE TECH SPECS	54	
	55	THEATRE AND ITS IMPACT ON SOCIETY
ORIENTATION DAY (2017)	56	
	57	REIGN OF GREEK AND ROMAN
CREATIVE FACULTY	58	
	59	CYGNUS 2.0
FACULTY PHOTO	60	
	61	GEO- POLYMER
TEAM FRESCO PHOTO	63	
	64	THE MUSE OF HUES
TRADITIONAL BREATHING SPACE IN BUILT FORMS	65	
	69	AROUND THE NORTH IN 15 DAYS
IMPACT OF CLIMATE CHANGES IN HUMAN SETTLEMENTS	73	
	75	AAAD EVENTS
INNOVATIVE TEACHING TECHNOLOGY	77	
	79	ORIENTATION DAY (2018)
TEAM FRESCO	80	







**A**ditya Group of Institutions was started in 1998 and has gone through various phases of development with five diverse branches in the medical related and management segments.

The commencement of Academy of Architecture as yet another branch in the Aditya family has given me a new experience towards the education system and the teaching methodologies. I am aware of the challenges the present education system is facing. I have always insisted on adaptive learning and collaborative learning. As I have always believed in education beyond class room, our students of Architecture are mostly on field works, case studies, study trips etc which is a very healthy way of learning. For this purpose we have associated with universities overseas on exchange programs etc.

We aim at giving them the best resource people available and the state of art facilities. For this purpose we are coming up with our new campus off Rajankunte dedicated for architecture. The motto of AAAD is to have experienced faculty and expert pool who will impact the best knowledge in the field. AAAD has crossed four mile stones and the fifth would complete one cycle.

I wish them success in all their initiatives right from academics to their sports, cultural and specially their most awaited fest CYGNUS 3.0. Wish the FRESCO magazine a great success.

CHAIRMAN : Dr , B . A Vishwanath



**I**t was a Spark in the minds of the Germinating Architects that flames into an active student driven and student centered annual magazine "FRESCO". This exercise of formulating a professional output has helped us in identifying the hidden talents of our students atleast to a small extent which would have otherwise gone unrecognized in their opportunity oriented career of five years. We believe in achieving goals in phased and systematic manner. That which was a rocket science before 1st edition of FRESCO has now become a simple work of many talented hands culminating as an end product.

Parallel to this our students are working on various installations, art works, exhibitions, organizing events etc where they understand the wholestic development of a person. These activities have given way for a student curated fest called "CYGNUS 3.0", which is also an occasion for the release for their annual magazine.

In nutshell our students

Go through diverse stages of development participating in study trips both in India and abroad, attend a number of workshops and guest lectures, hands-on activities, social awareness programs etc along with their regular curriculum.

With the strong support extended by our management, we are working on exposing our students in every possible challenge in life. With our senior most batch reaching the final year next, we wish them all success in their career and we assure to extend our support through their life.

- PRINCIPAL: Dr (Ar) K N Ganesh Babu





#### EDITORIAL NOTE

Greetings!

**F**RESCO is a painting which interprets colors and encages moments behind the art. It depicts a story. We are the prime FRESCOS crafted by nature, inculcating and incorporating its delight in our lives.

As Frank Stella quotes, "One learns about painting by looking at and imitating other painters." As we chase our inspirations in our daily mundane life, adding colors in the form of learning and unlearning things, the joy of imitating becomes an integral part. Gladly presenting FRESCO with all its colors presented by the students of AAAD.

This magazine would not be possible without the constant endorsement by our beloved Chairman – Dr. B.A. Vishwanath, supervision of our Principal - Dr. Prof. Ar. Ganesh Babu and our ever inspiring and guiding force – our literary coordinators – Asst. Prof. Ar. Romeo Williams, Asst. Prof. Ar. Neha Sahay, Asst. Prof. Ar. K. Siddhartha and Asst. Prof. Ar. Sana Khan and the abiding guidance by the faculty of AAAD and the immense dedication and hard work put forth by the literary team along with the support of the students of AAAD.

Proudly presenting the Second Edition of FRESCO. Hope you enjoy reading.

- Regards,  
Editor: Paramita Jana  
content curator: Keerthana G Prasad



# KEYNOTE

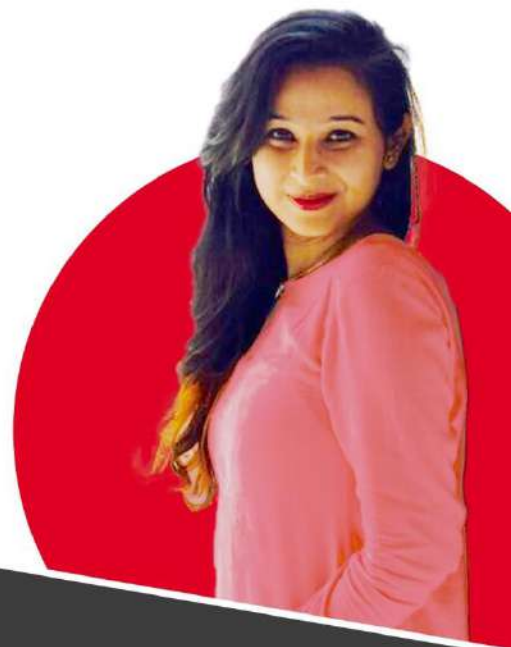
## A SOLACE FROM THE DAILY LIFE

Life is a predetermined process of monotonous actions - one wakes up, refreshes, work/study, prepare for tomorrow and rest. One finds moments of solace from this process - a cup of chai/coffee with a side of gossip. So it is very easy to lose oneself in this constant loop and forget to enjoy the journey or the experiences through the daily life. The whiff of the market, the heat of busy streets during peak hours, the dance routine of the traffic police, chattering of children. All these small incidents may seem unimportant but these small things add up to shape who you are. As the African proverb says "It takes a village to raise a child" it means the environment and the context that makes you who you are. Thus you can say everyone is a Fresco of their life experiences. A beautiful collective that progressively improves and the small moments of solace breaks the unique touch for each person's story.

If you ask a person what architecture is about, the most common reply would be design of buildings. It makes you wonder is architecture just that? Seems too shallow, doesn't it? I would say Architecture is a way of life which shapes the environment and affects the lives of others. Thus Architecture takes inspirations from the environment, the context and the user. It is a vessel to make dreams true and the Architect makes a fresco of the dream with a creative flair that serves and enhances the world.

With this humble and inspiring vision, we bring you the Second Edition of Fresco. A source of solace from the monotony of everyday life, a way to unwind after a tiring day, inside is a collection of articles on imagination, experiences, travel which may inspire or motivate you.

I am delighted to share with you the Souvenir of the Cultural and Technical Fest of AAAD - CYGNUS' 19. It has been a pleasure to work with the literary team and create this memoir. I thank you, Dear reader for your support in making this event a success and hope you enjoy every moment of reading Fresco.



**G**reetings Dear Readers,

To guide a creative mind into the right direction is akin to gentle strokes of colours on wet plaster to create something beautiful and timeless- A Fresco.

Welcome to the 2nd edition of Fresco, a souvenir from Cygnus 3.0 2019, the Cultural and Technical fest of AAAD, which speaks about the growth and aspirations of a budding college. With a child like curiosity, we have been treading onto the path of exploration and self-discovery year after year.

Proudly presenting to you excerpts from our journey of the past year; from exploring India through the lenses, to a peek into the creative minds of our architects in the making through their works while penning our inner most thoughts onto paper.

Congratulations to Alpas, the literary team for putting it all together.

A big thank you, dear Patrons and Readers, for your continued support. Hope you enjoy reading it.

-Ar. Neha Sahay.  
Literary coordinator  
Assistant Professor  
AAAD, Bangalore

## KEYNOTE

**W**e live in a land of varied culture and traditions dating back several centuries. The various monuments spread across the world define our ancient history which is inseparable from us, as those ideologies define our generations. We have always played a very important role in preserving these architectural monuments beautifully for our future generations to understand.

The beauty of our culture lies in the ancient monuments which signify purity and unite us all together, restoring the beauty of our culture should be our utmost priority, with architects being the curators.

- Ar. Sana Khan.  
Literary Coordinator  
Assistant Professor  
AAAD, Bangalore





STUDY TOUR - SOUTH INDIA



AAAD NEW CAMPUS



INTERNATIONAL STUDY TRIP - DUBAI



MMBC - CLASS ACTIVITY



INTERNATIONAL EXCHANGE PROGRAMME - IUUKL



MODEL MAKING WORKSHOP



FRESHER'S DAY CELEBRATION

## SALIENT FEATURES

Aditya Academy of Architecture & Design will keep studios open 24 x 7 for students  
Guest lectures by Architects and Artistic personalities like film makers, dancers, singers etc.

AAAD will conduct Study & Cultural Tours which are necessary for students' appreciation of Architecture, Culture & Sound and Smell of the regional and international architecture.

## INFRASTRUCTURE

Competent and well versed faculty with pedagogy of architectural education  
Audio Visual enabled Studios and Lecture rooms  
Properly selected books, national and international journals in the library to enrich students  
Digital media on national and international renowned Architects and architectural marvel projects.  
Free Wi-Fi  
Well equipped workshops.  
The campus boasts of indoor sports stadia with indoor temperature controlled swimming pool for recreational activities for students.

For Campus Visit & Expert Counseling: Ph: 080-2857 1199 Mobile: 98868 69000 | 7899977603

E-mail: [aaad.archi@gmail.com](mailto:aaad.archi@gmail.com) Website: [www.aaad.in](http://www.aaad.in)



PROPOSED  
NEW  
CAMPUS







# BURJ JUMEIRA

A SOARING SKYSCRAPER AMONGST THE SAND DUNES

Dubai, a place which rose to the crescendo with their oil productions and their architectural projects which have always left the tourists in awe. One of their next marvel is the 550 m high Burj Jumeira which is to be one of the 14 'tallest skyscrapers' of the world.

On January 31, 2019, placed centrally in the Jumeira district which is "a city of the future distinguished by its intelligent design and cohesive infrastructure and network", the architects Skidmore Owings and Merrill initiated the Burj Jumeira. With easy access to the beaches, the iconic structure raves over the harmonious ripples of the UAE's sand dunes. The base design is the outline of Sheikh Mohammed Bin Rashid Al Maktoum's fingerprint with an interactive façade.

Expected to terminate by 2023, the Burj Jumeira is portrayed as the centre for Dubai's cultural activities with luxurious amenities including a lake, water fountain, terraced outdoor amphitheatre and a crown for leisure events. It also offers a beautiful 360 degree panoramic view of downtown Dubai from the observation decks which are accessible through elevators.

--AYESHA ZAHRA  
4TH SEMESTER



# OLFACTORY ARCHITECTURE

The main medium in architecture is visual, which is why we forget about the titillation of the other senses that architecture causes. Architecture doesn't just pose as something to be in awe of and something to stare at, but something to live in or work in, the structures that architects create are sculptures of the essence of a man.

Our dwelling in these three-dimensional, liveable pieces of art is bound to create memories. Memories of your mother's special cookies, memories of the smell of mud in rain, memories of a promotion, memories of a jam sesh with your band. These emotions that architecture evokes always has an underlying layer of smell that we relate the feeling to. Smell, emotions, and architecture have an intertwined connection, one reminds us of the other.

This undeniable relation is what makes the sense of smell so intrinsic to experiencing architecture. Pleasant smells induce a feeling of happiness, and introducing such smells in your design would remind the user of it when they smell something similar, and your design gets related to the feeling of being happy. Foul smells, on the other hand, would make the user associate the design with negative emotions.

Simple deduction like this, with the introduction of the fourth dimension of smell, could easily elevate your design. It lingers in the mind of the user for much longer.

-MOHAMMED AHMED  
4TH SEMESTER



# CHISEL

**B**uilding design at its visionary best describes its play with the context, imagination and inspiration. It possesses a quality almost “indescribable” that embodies abstraction and above all the consequences.

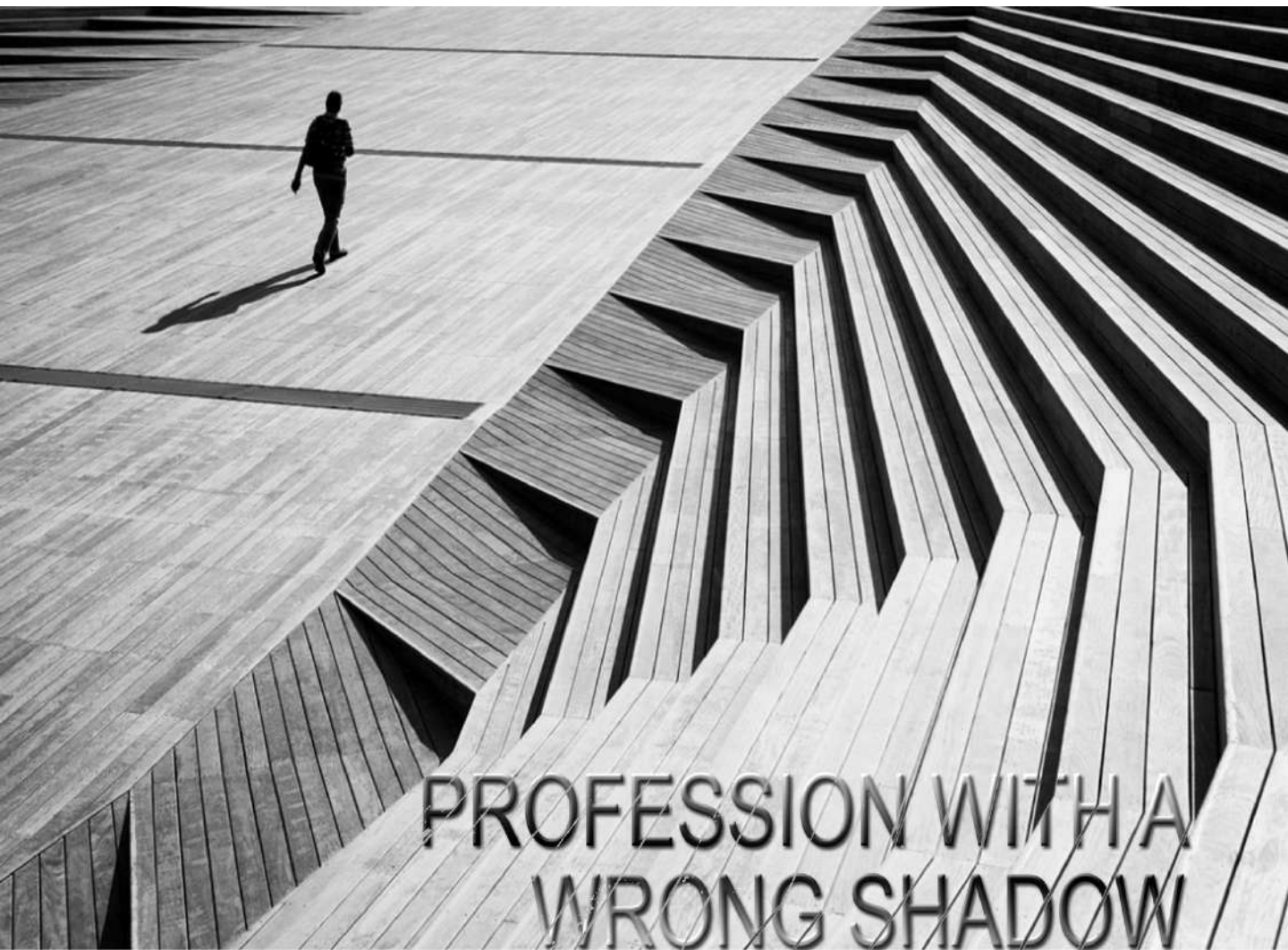
But today's architectural idealists admire iconic creators looking into its ambiguous fabric, aesthetic ambition and activation of the city. To endeavor the standards of living the exteriors are embellished through sculpting the shapes, orienting masses and exotic textures. Study through forms and volumes are undoubtedly a path of experimentation and exploration. The

initial approach by the designers start through trims, carves, blending and merging of forms. Erecting a dizzy spectacular structure with planes stretched or shrunk is always awe – inspiring and captivating. No less than extra ordinary, architectural sculpts are focused on springing out sculpted shapes, fragmenting and orienting the masses. Creation and development of forms are primary assets of most planners. The best approaches are usually through conceptualized sketches that always aim to provide a backbone and foundation to the design. With space being the core of architecture, it's necessary to decode its characteristics and discover its function via end users brief.

RIFQUTH S.B  
4TH SEMESTER

# STICE





# PROFESSION WITH A WRONG SHADOW

**W**hy does criticism have to be a shadow of architecture? Why can't architects have freedom from ancient rules and be a lion in a jungle?

Criticising everything around has possibly been a timeless way of life in architecture. Anybody and everybody ferret out faults in almost all perfectly carved structures regardless of the fame it possesses. No matter to what comfort the architect designs, ordeal overcomes them. It stresses itself all the way into architecture to enlighten its importance.

Architect's have merely an hour or three to doze, but a 24+1 for criticising everything that obstructs their vision. The profession is genuinely incomplete without criticism. It isn't that criticism begins after graduation, but it descends as we ascend and the novice is worse than the ace.

Ego and jealousy are considerable factors and are a part of the profession aiming to destruct an architect's character.

Criticism might sometimes end up productive but it isn't always right to quest for errors in what others design. Regardless of the rank they possess, thought process in every sole architect depends on their ideas, creativity and adoration. It isn't necessary to follow what our ancestor did, architecture is all about inventions and not discoveries and rules.

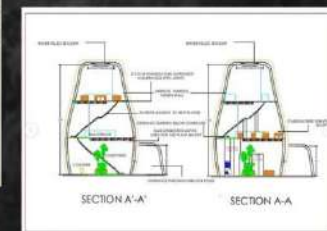
Just like Eisenman devised deconstructivism, we are the masterminds of "our age of architecture", creations fresh and wild, with berserk ideas... to make the impossible, possible!!!



# ARCHITUDE

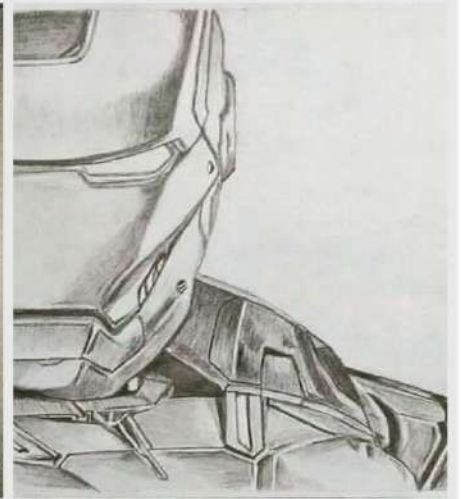
From, offering a platform for amateurs to promote their originality, to, forging taglines of humour and sincerity, motivating young architects worldwide, architude serves as a window into their life and working process. With the globe spotlighting professionals, pupils shrink into their educational dens lacking expo of innovation and flair, to refurbish the process of reflection, emphasis is placed on publicizing designs, sketches, studio tasks and architectural literature(quotes, short articles, poetry, memes etc...).

- THEJESH P (4TH SEMESTER)

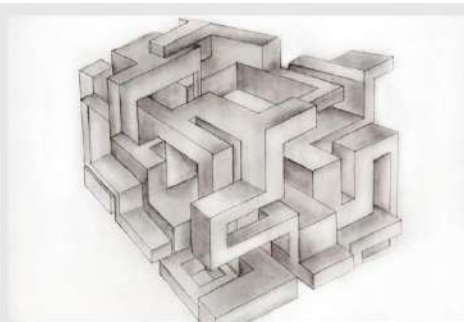


# **VENU GOPAL**

# **A-SECTION**



# **KARTIK KHASNIS    A-SECTION**



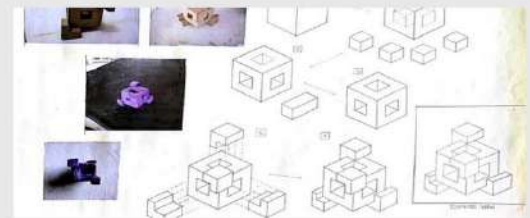
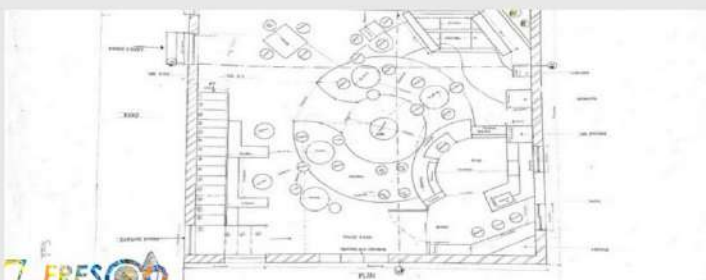
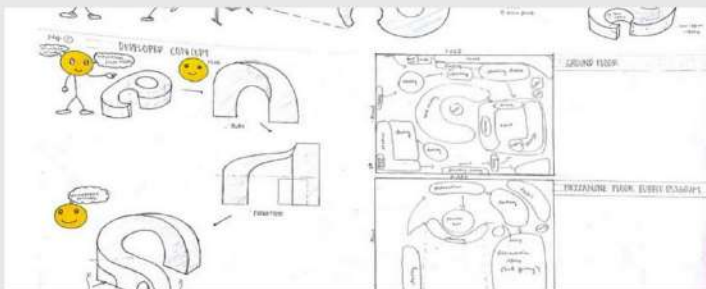
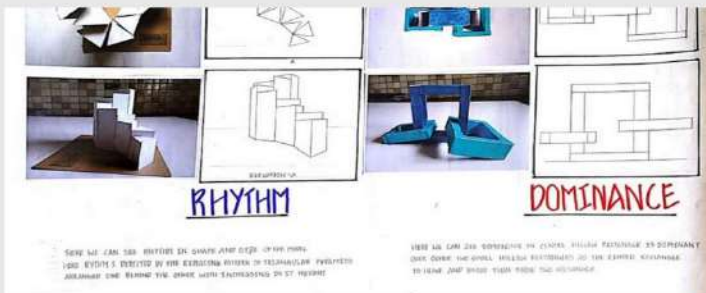
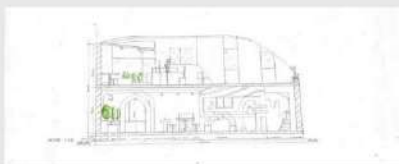
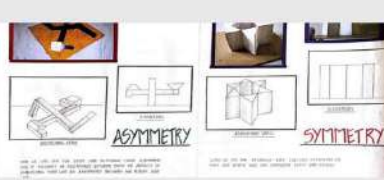
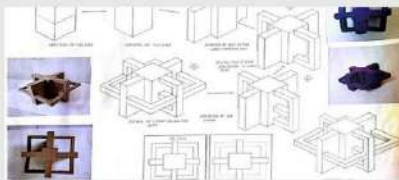
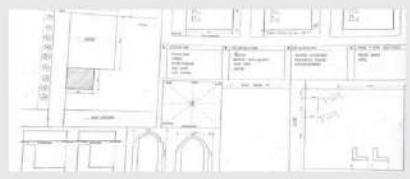
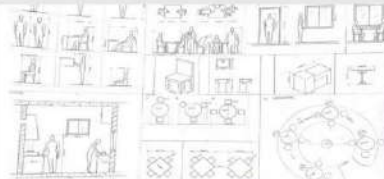
# **POOJITHA    B-SECTION**





# KARTIK

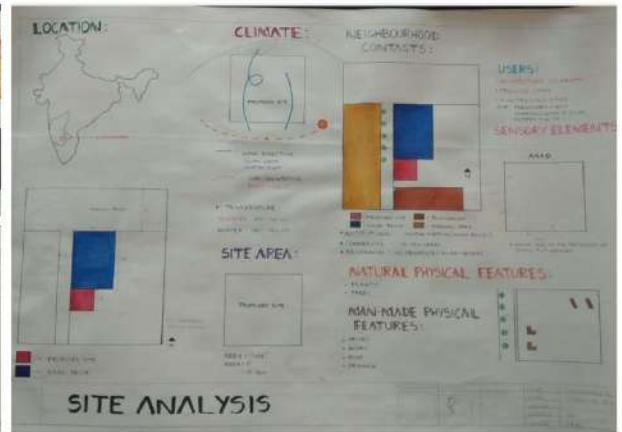
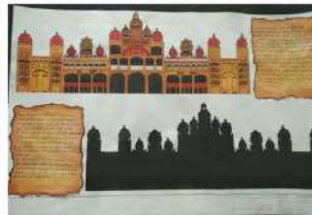
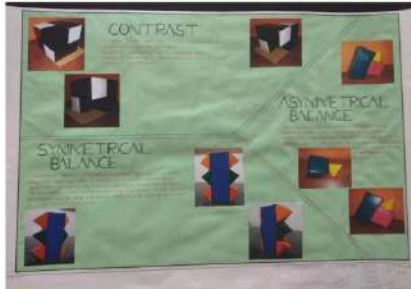
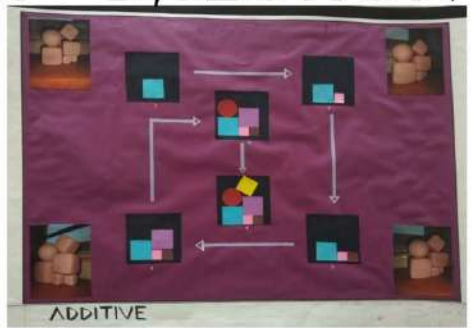
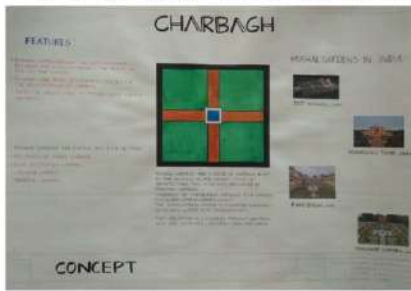
# A-SECTION





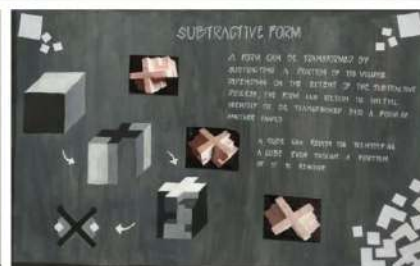
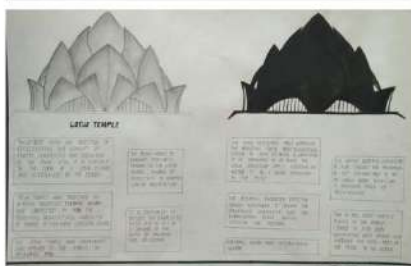
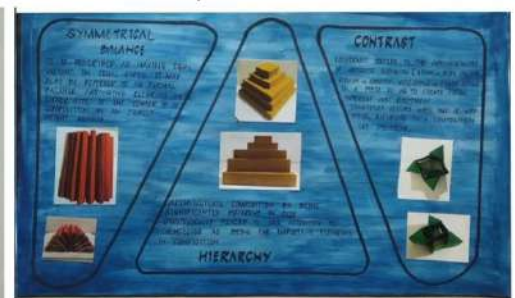
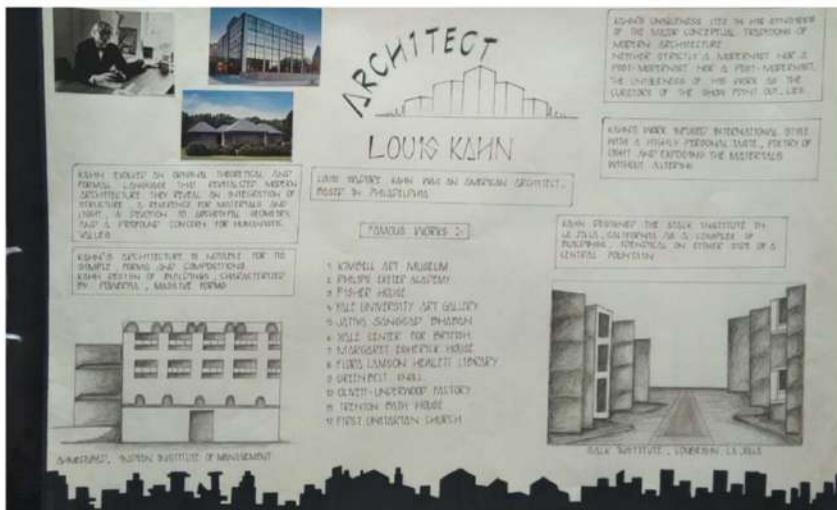
# THE JASHREE

# 1ST SEM - B, SECTION



# PRATEEKA

# 1ST SEM - B, SECTION



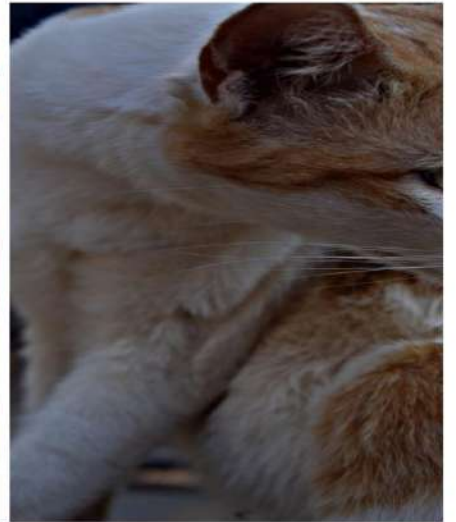


PALLAVI

1ST SEMESTER



ROHAN PRASHANTH



SAI HARSHITH

VENU GOPAL





# AAAD - 1ST YEAR







# THE SEVENTH SEAL

**H**ow sure are we of God's existence? What proof is there that He ever did exist? Such are the questions that have stayed unanswered, and puzzled humanity for eternity. Many have tried to answer; but narrating myths, stories, and miracles aren't discernible answers. The filmmaker Ingmar Bergman is one man plagued by such questions, and this film is an articulation of these queries.

Antonius Block, the protagonist, encounters Death while returning home from the crusades and strikes up a deal with him: Death will let him live for the duration of the game; if Death loses, his life will be spared; if Death wins, Death will take him and the people around him. For the duration of this game, Antonius strives to gain knowledge about God's existence, he begs Him to show Himself, criticises Him for hiding behind miracles and prophecies. The thought of an unending emptiness beyond death scares him.

We come across a range of characters who join Block on his journey home. A distraught man reeling from his wife's abandonment, Block's squire, an actor couple and their 1-year old son, a housemaid that the squire finds; the wife who left the man joins them too. They journey under the watchful eye of Death. Only the actors could be counted as 'believers'; during the session where Death wins the game, while everyone sees Block playing by himself, Josef, one of the actors, is the only one who sees him playing the game with Death himself. This utterly shakes him, he leaves the caravan with his wife and son while the rest continue their journey and find Block's wife.

The film ends with a visual of the 'sinners' being led by Death in a macabre parade, while Josef watches from afar, oblivious of the tragedy he saved his family from.

But the thought process in which the pious man wins is archaic, the ending seems more of an attempt to please the censors than an artistic choice. Sure, thanking Him in your good times and not forgetting Him in the festivities, and having faith is an admirable feature; but the idea that only these people will be brought to salvation is not entirely true. There are good men across the spectrum, their deeds should be the rubric to judge them and not their religiosity. We tend to remember God when we face hardships; in remembering him, some people do find the hope and faith to face their troubles. Believing in these thoughts might prove beneficial to the believer: faith in God, no matter if he exists or not, and an unwavering belief in the idea of an all present power watching us pushes us to do the right thing, to face our problems head-on.

It is the ones troubled by the questions who go out of their way to seek answers, the thought of having faith in the man in the sky is wasted on them; they become realists, they require staunch, tangible, mathematically provable answers, a lack of which could drive a person to the edge of insanity. The believers tend to take irrational steps to appease the Lord, too. The film expertly shows people losing their minds, being scared of God punishing them with the Plague, and people losing their minds trying to fill the void the exit of God from their psyche has created.

-MOHAMMED AHMED  
(4TH SEMESTER)



# WHEN THE INCOMPLETE TELLS A STORY.

**W**hether it be the present or past structure there is always a story which is written and the emotions are felt through the way one designs. Even a subtraction and the use of dull colours tells the story of sadness and emptiness. The Jewish memorial in berlin conveys such feelings with the use of deconstructivism.

Designed by the American architect Peter Einsmann , the memorial has depicted the feeling of remembrance of what happened to the Jewish victims of the holocaust and to understand their pain and their emotions during their stay in those death camps.

Arranged in an area of 19,000 square meters the unknown exposed concrete tombstones which symbolically captured the horror of the death camps where people were strangers to each other but still were headed to the same destiny. The tombstone was placed in such a way that the passage looked like it would lead to nowhere which depicted the Jews confusion and the state of helplessness. The use of steel was an ancient tool which honored the dead.

The Jewish memorial wanted to convey a story to the society about the emotions of the Jews and to convey a moral for the past to not repeat the future.

-NIHARIKA SHETTY  
(SEMESTER 6<sup>TH</sup>)



# JAZZING

A young girl with blonde hair, wearing a grey hat, a dark green jacket, white tights, and black boots, is sitting on a wooden bench outdoors. She is holding and playing a small, reddish-brown ukulele. The background is a soft-focus view of trees and foliage, suggesting an autumn setting with fallen leaves on the ground.

**“Where words fail, music speaks”.** Music is the key to our soul. It is a universal language which can be shared with people around the world. Music can remind you of thoughts, memories and people related to it.

Music has a vast history- from the tribal age till date, it has been a constant force behind bringing together people from all walks of life. When we look back, probably the first music may have been created in Africa. “Ancient music” is the name given to the music of the pre-historic age. The oldest known song was written in Cuneiform, following which contemporary music made its appearance along with traditional or folk. Modern music is breaking down all the traditional conventions and thereby bringing complete freedom in melody, rhythm and chord usage.

From classical, to jazz, music has its own dimensions. Indian classical music has mainly two types- Carnatic and Hindustani music. The main features of these are raaga and taala. On the other side, western music has rock, blues, jazz, and country, which is found in almost all parts of the world. Music joins people together in unique and lasting ways, connecting people across the globe.

Music is meant to be shared. The greatest joy in life would be when we share and enjoy music. It has always been a very important part of my life. It can change any person's mood. It is a very well known fact that music has a soothing effect on humans: listening to it improves our mental state and increases intelligence and concentration.

Music is a part of our everyday life. It has no language barrier, anybody can learn or listen to any type of music. Music is like mathematics- if you can relate to it, it consumes your soul, otherwise it is incomprehensible. ‘Your heart is just a beat box for the song of your life’, so feel the song of your life.

-SRUSHTI B.S  
(2ND SEMESTER)



# PHOTOGRAPHY

**T**aking an image, freezing a moment, reveals how rich reality truly is." Photography is simply a copy of pictures we see through our naked eyes, which can be stored forever. The immense improvement of technology in photography today enables us to see pictures captured with more detail and clarity.

Great photography comes from great passion. There's a lot of people in the world who are inspired and attracted to the beauty of photography. Photographers see the nature of elements deeply and creatively and capture them in pictures or videos. They don't just make us see and feel the moment, but modern photographers are also very much interested in editing or modifying the captured pictures or videos in order to beautify them and make them look more attractive. The passion and competition for photography are rising as people are getting attracted to the visual effects and advanced technologies.

The professionalism in photography is drastically increased as the demand and value for photographic art is more and people are choosing it as a profession rather than a hobby.

Photographs do amaze us, they bring us closer to nature and its elements. It recreates and brings back the joy of past memories, and also helps us observe minute things which we fail to observe and enjoy through our naked eyes.

"Photography is a way of feeling, of touching, of loving. What you have caught on film is captured forever. It remembers little things, long after you have forgotten everything." Photography that meets the criteria of the art world is just a tiny sliver of the camera's artistic riches. From news images to the Hubble telescope, photography is the art of real life-however manipulated. And real life creates true art.

- RISHIKA  
2ND SEMESTER



# ORANGE SPELL

#travel #fashion #shutterbug

## -----ABOUT-----

**RAJESH LAKSHMIKANTHA**

- A story teller, travel blogger, aspiring architect and photographer.  
And I believe that a rolling stone actually gathers moss



## ----HIKE UP UA LIFE----

In quest of Coorg's highest peak - Tadiandamol

My legs were idle for a long time since the Roopkund trek knocked on my door. As pre monsoons hit some parts of Karnataka, the adrenaline rush started shooting up, and the excitement for the trek began. The rains had remoulded the Western Ghats into a beautiful green carpet.

On the 15th of May, we decided to trek Nishani Motte Hills, near Madikeri. After a couple of people backing out, two of us decided to trek the Nishani Hills. We prepared for the trek, and departed from Bangalore, making our way to the destination on a bike. Weaving through the hustle and bustle of traffic we reached Madikeri, where it came to our knowledge that the trek to Nishani had to be done with a larger group, after which we pivoted to trek Tadiyandamol instead. Post lunch, we headed towards Kakkabe, and started ahead with the journey.

## HOW TO REACH FROM BANGALORE:

If you are taking private vehicle then you can follow bellow route :

- 1) Bangalore --100Kms--> Mandya --26Kms--> Srirangapattana --20Kms--> Elivala--31Kms--> Hunsuru--45Kms--> Gonikoppa I--16Kms--> Virajpet--26Kms--> Kakkabe.
- 2) Bangalore-->Mandya-->Srirangapattana-->Mysore-->Hunsuru-->Kushalnagar-->Madikeri-->Kakabe.

Road condition of second route is better than first one.

Public Transport ( From Bangalore): Catch KSRTC buses to Virajpet from Satellite bus-stand . Then change bus to Bhagamandala, get down near Kakkabe (Aramane stop which is 2 Kms before Kakabe).

## TADIYANDAMOL PEAK HEIGHT:

Tadiyandamol peak height is 1740 meters from sea level. This is the second tallest peak in Karnataka, and the tallest peak in Coorg.





[www.orangespell.ga](http://www.orangespell.ga)



Orange SPELL



[orangespell](https://www.instagram.com/orangespell)



## DAY 0

Departing from Bangalore at midnight; journey of 260 kms to Kakkabe which is the base town of the peak. A brief summary about the trek and introduction among trekkers will be done. We advise trekkers to have light dinner before boarding. The overnight journey will be as exciting as the perfect destination for trekking in the Western Ghats.

## DAY 1

The fragrance of coffee dwells everywhere in Coorg which makes for a pleasurable morning. The eyes can feast on spectacular views of the coffee farms that are spread across acres of land. Reaching Kakkabe the base village of Tadiyandamol Peak in the morning adds to the joy that the weekend getaway promises. The trek starts from Nalknad Palace which is on the base of the hill and is 4 kms away from the main road.

This road to the Palace is curvy and uphill making it difficult for some vehicles to complete the uphill ride. There is a gate on the left side of the road to the palace which can be used for large vehicles to turn back. The roads here are well defined and go straight to the trekking trail of Tadiyandamol Hill. A small waterfall on the way adds to the charisma of the trek. Several streams will be chanced upon on the way and may be used as the last resort for potable water. While walking on these paths you may encounter a range of insects, uncommon colourful snails and vibrant butterflies along the way. On the right the eyes capture an impression of the vibrant green colour of the flora under the blue sky painted with clouds. There is a sudden change in the horizon when on the left side of the thin trail a deep valley of forests adjoining the large base of the Tadiyandamol hill arrests the sight. The Big Rock is used by many as a camping ground. Standing on the rock and capturing the panoramic view is a moment worth cherishing. Seen further ahead is a large hill which is often confused to be the Tadiyandamol peak, these peaks are known as false peaks. After monsoon season on the opposite side of the hill a small valley of flowers leads to the trail of the trek.

There is a steep ascent till the Shepherd Point from which the valley can be seen. A dark green forest range follows with an upper gradient in the trail. If the sky is not clear it could get gloomy. A paradise for photographers, the incline rises further and the trail gets narrower.

## DAY 2

To witness the green coffee plantations of Coorg and watch the sunrise from the coffee fields is surreal to say the least. On the way to Bangalore, spend some time at Chelavara falls via Virajpet if time permits. To explore more, one can visit Igguthappa Temple which is one of the oldest temples of Coorg.



# AAAD - 2ND YEAR





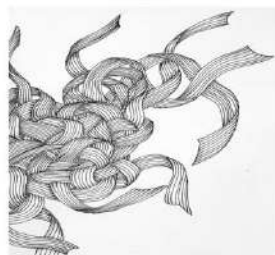
GANESH C PURADAR

3RD SEMESTER



NITHISH KUMAR GTP

SAMUEL VANALPEKE



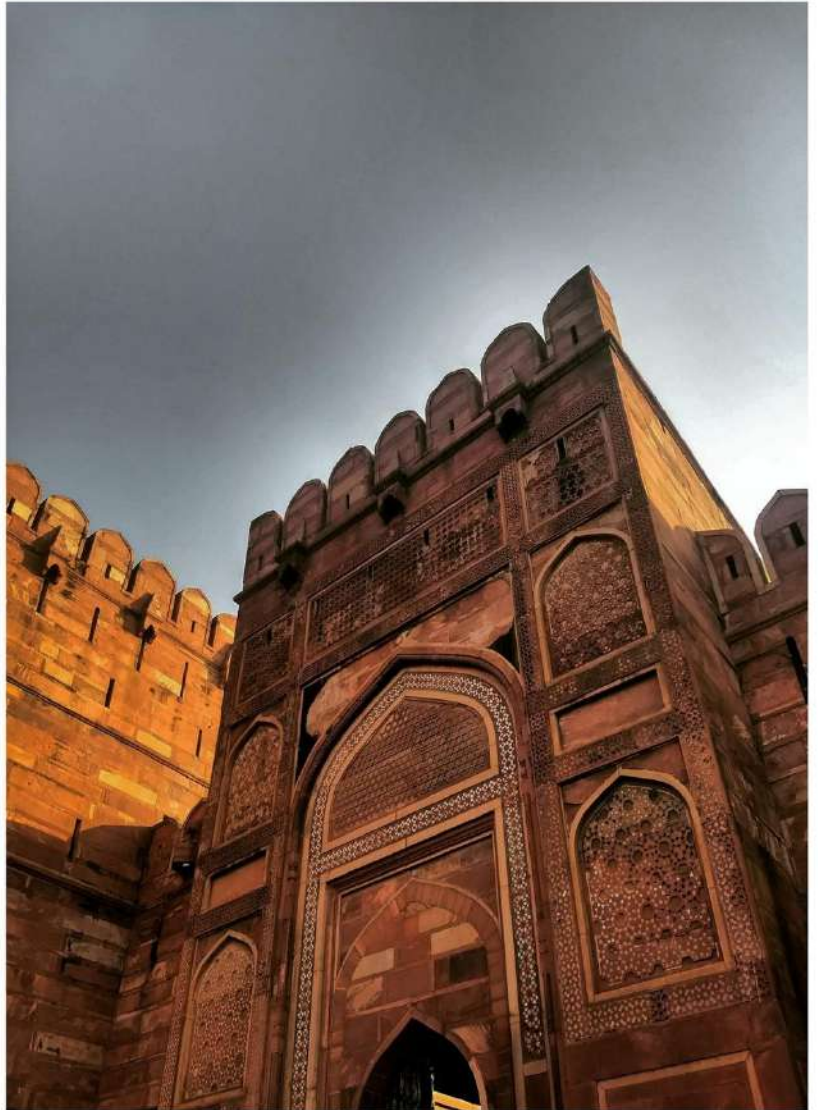
SAMAA HASAN





# 3RD SEMESTER

# SHALOM DEEPIKA DAVID



## SAMAN KHUBA

## PRATHIMA CHOWDARY



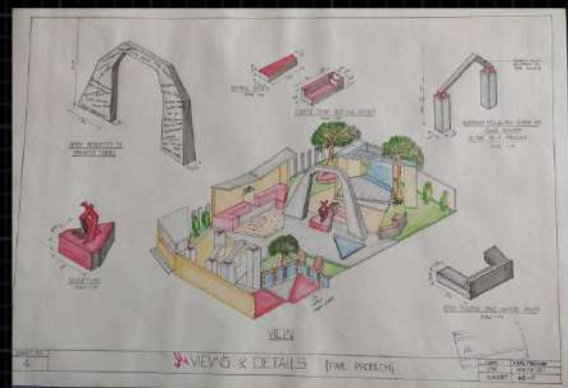
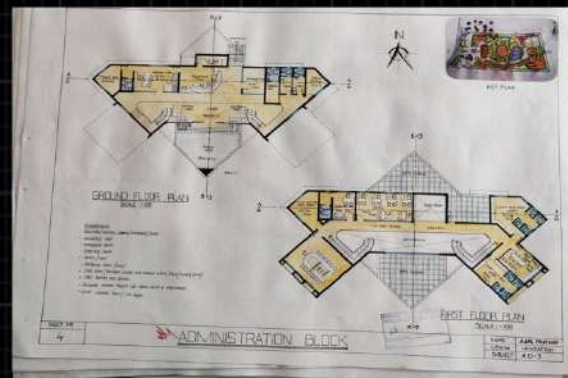
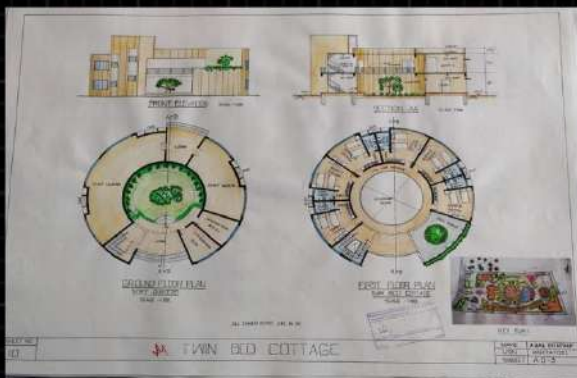
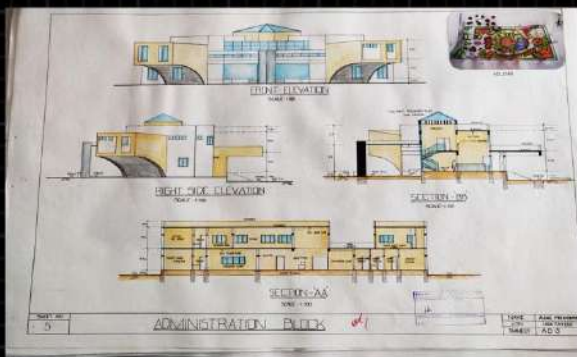


# NITHISH KUMAR GTP



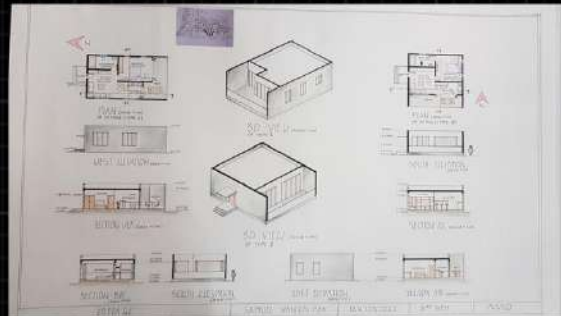
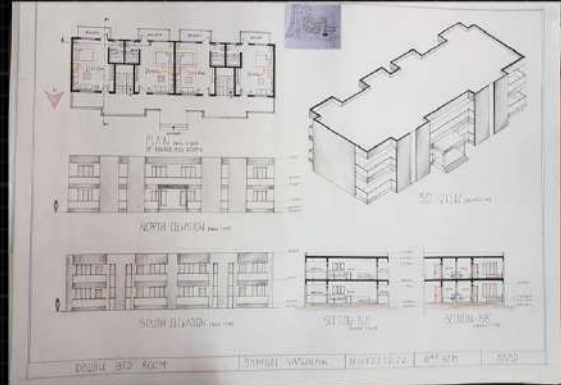


# AJAL PRATHAP - 3RD SEM

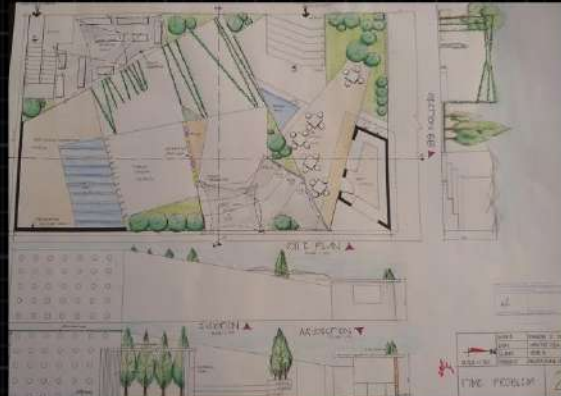
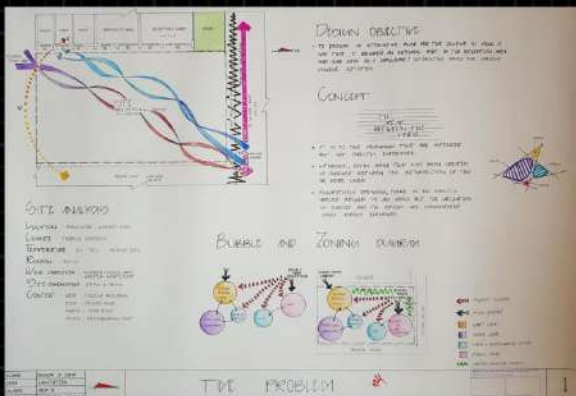




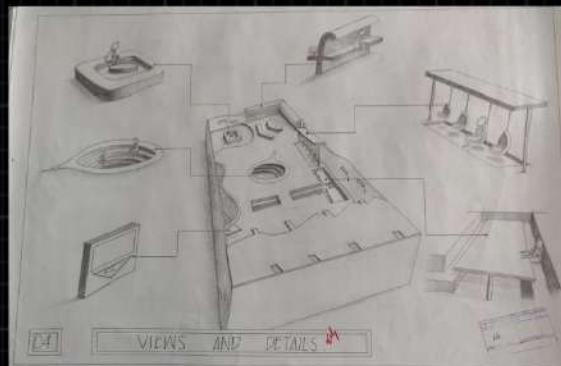
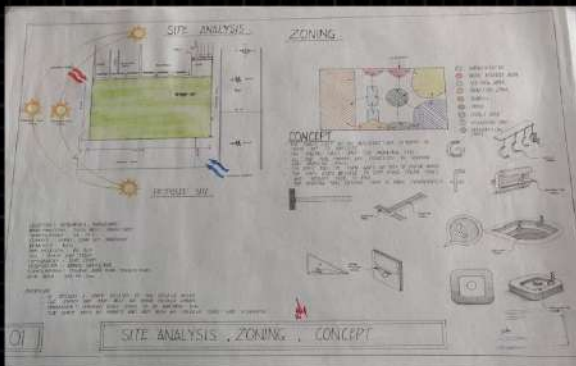
# SAMEUL VANALPEKA - 3RD SEM



# SHALOM DEEPIKA DAVID - 3RD SEM



# THEJESH P - 3RD SEM



**B**OMBAY.....was a city of mafias, Mumbai is a city of mothers since the name Mumbai is derived from 'Mumba Devi Temple' situated in the city. Bombay was known for its wide range of architecture under British rule which still survives, whereas Mumbai is more colorful with the introduction of Gothic style of architecture. The most famous structure of Bombay is 'The Gateway of India' and was built in the time of Governor Sir Bartle Frere who demolished the old town to raise new structures. Then came the 'Bombay Gothic' which is the blend of Gothic and contemporary style. Bombay was known for the Gateway of India and present day Mumbai is known for Mannat (Shah Rukh Khan's residence)!

With change in the name of the city many other things felt different. In terms of food, Bombay served Bhel, Vada pav and the iconic Cutting chai whereas Mumbai became sea food hub with the most exclusive Bombay Duck fish. So now Mumbai is known for its sea food.

Baarish was the identity of Bombay and now Mumbai on an average experiences 75% humidity. Social interaction among people was more with its Marathi speaking folks in Bombay, whilst due to increase population traffic lasts longer than social interaction, with 80% folks in Mumbai speaking in english.



Mumbai is stench of pollution. Bombay had an emphasizing scent of Gajra. Then coming to the most known network of Bombay after Victoria terminus railway network, is the Dabbawala service also known as tiffin wallahs. It is a lunchbox delivery and return system that delivers hot lunches from homes and restaurants to people at work. The Bollywood movie 'The Lunchbox' is based on Dabbawala service. Mumbai prefers fresh menu and swiggy. Bombay- Dim-lit Dharavi, Mumbai- Zero power cut Match Box Houses.

In terms of movie Bombay had only 'Prithvi theatre' and spotting a celeb at Lokhandwala was a great achievement, while Mumbai means Bollywood and film shooting. With all the latest technology and science Mumbai managed to make 'Bandra-Worli sea link', whilst Bombay had only Haji-Ali Dargah.

Mumbai is Vision, Bombay was Emotion!

-PARAMITA JANA  
(6TH SEMESTER)





# JOURNEY TO NOWHERE

Amongst all the journeys we make, the most important and unique one is the journey of life. To talk about life, firstly one must have immense gratitude for having this wonderful lifetime. It's quite debatable to call it wonderful as few of them may argue otherwise. But if one tries to understand it deeply, indeed it's wonderful. This journey to an uncharted destination starts with the childhood. Growing without solicitude, all fun and frolic and no care in the world, but as we grow with the society, we start recognizing all aspects of life. We develop a notion of life's harsh realities rather than embracing all its beautiful parts. We complain, whine, and dwell over petty issues but grow none the less.

Human life is highly influenced by the connections, communication and relationship we have with the people around us. Choosing right people also plays a huge role in one's life. It's almost impossible to live without human interaction. We evolve with human relations. When it comes to friends and partners, one must be able to foresee people and be brave enough to cut off trouble makers.

But we should never lose people who genuinely appreciate, understands, and build us up. They are the people who would stick with us through thick and thin. One not only has to go through all the struggles and sorrows but also has to understand that there is always light at the end of the tunnel. No one can escape trouble and turmoil. What differentiates people is their approach to these problems. Wiser is the one who realizes it's a part of life and surpasses it with courage and happiness, without crying over what has passed. Happiness is a choice. Whatever the drawback may be, half of them can be solved by having courage. Most of them are not even problems; it's our cynical mindsets that exaggerate the smallest of issues, eventually resulting in people losing interest over everything in their beautifully gifted life. One thing to always remember is that bad times are short-termed and fall into place with time. Everything heals eventually, the pain will ease and happiness will take its place. Most of us forget to be grateful, but happiness is everywhere, if only we can see them. The journey of life to nowhere is full of vivid experiences and a journey to be truly cherished.

--RISHIKA  
(2ND SEMESTER)



# MUSIC

One good thing about music, when it hits you, you feel no pain  
- BOB MARLEY

**N**o matter what culture we follow, there is not a person in this world who doesn't love music. It has the ability to remind us of certain events in our lives that made us smile or made us sad.

There is evidence that music relaxes our muscles, lifts our mood, and reduces one's anxiety. Jamming to happy music may make us creative . When we put our headphones on and listen to our favorite songs, we get engrossed into our work to a point that it feels like even though we are in a room with a dozen voices, we hear none of them. Its just us and the music playing in our headphones .

Headphones give us absolute control over our audio environment, allowing us to privatize our public spaces. We assume that people wearing headphones are busy or oblivious . Now it has become a trend of using headphones to appear that way even without music. Wearing soundless headphones is now a common solution to block people from disturbing them.

Headphones have the capacity to make our music like our thoughts. Something that nobody else can hear, something we can choose to share .

Music also plays an important role in entertainment industry as it gives a separate feel to a movie as such. It acts as a catalyst to the emotions of the scene which makes the audience cry, laugh ,furious, excited etc. One of my favorite music composer is Hans Zimmer whose aggressive wall of sound style has come to characterize what the modern blockbuster should sound like. From superheroes to sci-fi, to war, his music always brings soul to a movie.

As we have different music for every occasion, It's the song we 'choose' to make a part of our day, which defines our emotional journey as human beings.

-FARHAN BAIG  
2ND SEMESTER







# SOCIETY- A PARADOX WITHIN ITSELF

People's values, actions, thoughts, opinions and perspectives define their individuality. The human thought process deviates from its flow of clear thoughts when it is intoxicated by influence of numerous thoughts of other people shadowing over their thoughts and saturating it. The demonic role of manipulating a human mind to think in a standard line of actions as per the stipulated bunch of guidelines is activated by the beast called-society. Society acts as a major agent in suppressing genuine, fresh human thoughts by making people a slave of its own.

Methane- a sewer gas, cadmium- a battery core, ammonia- a cleaning agent, methanol-the rocket fuel are all masters of their own functions whilst they lose their individuality when wrapped within the thin paper of cigarette. All these elements of a cigarette, which act as productive units of benefit when considered separately, become detrimental when enclosed by thin light weight rag fibres- the cigarette wrappers. The serviceability and the usefulness of all those elements is eaten up in a single gulp when they are suppressed within this thin heinous wrap, and further on, they act as killer bullets to a human system.

That's the sequence of actions a society is bound by. Every individual has his own decisions, actions and opinions which hold justice. But when the thoughts are attacked upon by a hurricane of mixed thoughts by the people of a society, they tend to flow with baleful words, and eventually end up being a core medium of devastation and downfall of a society. This paradox of the nature of a cigarette chemicals: - a metaphor for society in this context, evidently states the judgemental criteria created about individuals (here-the chemicals), but when these individual elements come hand in hand within the catch of a supreme destructor, they act and prove of a completely contradictory functionality.

This supreme block called society, thus in itself is a paradox. Society, which is created with an objective of bringing people of similar thoughts, customs, traditions together, in reality when looked deep into, segregates people on the basis of thoughts by binding them with restrictions.

On one hand, where society aims to create oneness, on the other hand it acts as a boundary preventing people from various other different sects joining in. Unity of people, customs, cultures should be the aimed objective of a society but contradictorily society acts as the great wall halting different people from coming together.

A place or a society with completely contradictory ways of living, and contradictory beliefs is to be found nowhere in the world. But there exists a creed called animals. Absurd but true, having their own will, a land of their own, a liberal group of creatures devoid of a devil called society. The most seemingly weird paradox of being a human being, is being a part of the animal kingdom.

Social animal- as we are called, still do not replicate the liberal, free living animals. If only the world was not segregated on the basis of similar thoughts, we would live in a fascinating land of absolute freedom by all means, a world with no restricted activities, a world without a demarcated area of thought, a world just like the world of animals, free of social fear. That is the society we dream of.

ARSHIA MEIRAJ  
4TH SEMESTER



# HYSTERIA

Eyes open, 3:14 am.  
Cold, flushed, in disdain.  
Reach out, only blackness.  
Empty, never-ending.

Eyes open, rushing ahead  
Going somewhere, directionless  
Panting, gasping.  
Heartbeat, surges.

Mid-day. Waiting for time to pass  
Broken smiles and broken thoughts  
Blaring noises, empty laughter and  
creaking sounds  
By and by, nothing lasts.

Almost there. Verge of death  
Hanging on just by a thread  
No hand to hold, no thoughts unfold  
Blank, time-lapse.

One more stage. No one in sight  
Abandoned bites  
Smoke a pack, get back on track  
Carnivals of discerning facts

Finally. The cycle repeats  
Fill myself up with concrete  
One move could decide it all  
An action to overhaul

One, two, infinite.  
Here, there, everywhere.  
Try to hide and they will seek.  
No matter where or how deep.

- Nuha Fathima  
(2nd SEMESTER)

# WHEN I WALK, I SAUNTER

I have been sat here,  
Waiting for redemption  
The key to happiness lies,  
Across the room of salvation.

It's just a small walk,  
Nothing that'd exert me.  
Should give myself a pep talk,  
Like, 'Go over there, avenge me'.

But my legs are heavy,  
And the head is pounding  
Gotta make myself steady  
There are people on me, counting.

One step, then another,  
The right leg, then the other  
But as I get closer  
I lose my composure

This is the dance I do  
This is the role I play  
For forever and a day.

- Mohammed Ahmed  
(4TH SEMESTER)

# OPTIMISM

I move backwards,  
I drown down the steep valley of pessimism,  
Flames lie beneath...  
Up they stand, helpless, staring at me;  
My screams fill the world,  
But the crowd acts deaf;  
My brain withers off in a whole...  
In a moment, of losing hope,  
My heart glows!  
I look up for optimism,  
And my soul, pulls me safe!  
That comfort, keeps me alive,  
An unextinguishable light of love!!

- AYESHA ZAHRA  
(4th SEMESTER)



# YOU'LL BE FINE

My eyes open, not knowing what time it is.  
The chilly breeze of the night flows over my face as i cherish it.  
I turn my head and that's when I see him.  
Within my reach, tall, he smiles at me grimly.  
I freeze in my bed and cannot move a finger or blink an eye.  
His eyes gleam as he tries to hypnotise me with his stare.  
I hear a whisper...no, two...no, voices...  
Plenty.

They all unite into one and that's when I feel a hand slowly gliding over my arm.  
Charming touch, calling me with her. Pleading and promising me the best and  
out of my misery,  
She takes my hand.  
A lady clothed in all black with ever so beautiful black eyes and the face of a  
witchcraft doll.  
My head spins violently and I'm going blind.  
I look back at him, his vibes ever so comforting and terrifying at the same time,  
he lures me into his trap.  
He approaches me silently with nothing but eyes and a black shadow...  
I cannot scream, I cannot breathe;  
He leans down next to my ear and whispers "you'll be fine" and smiles his best  
smile and closes the distance...

- Nuha Fathima  
2nd SEMESTER

# LAMENTS

I stand here in this house now,  
Lonely and cold,  
Memories rush, and how,  
You are gone, I am told.

What is left for me here?  
What is mine now?  
I am left with words untold,  
You got me, take a bow.

Mirrors on every wall,  
Reflections of me abound,  
Tell me, my doubles:  
You must have wisdoms sound.

The night is long, the night is damned,  
I am but a ghost, floating around,  
I have been forsaken now,  
What on Earth will I do with my life?

- Mohammed Ahmed  
4TH SEMESTER





# AI : A BOON OR A CURSE



**B**orn in a workshop at Dartmouth college in 1956 which contrasted with the human intelligence, the AI changed the world to what we see today and inspired many creative applications, including its usage to produce visual art. The AI also created a huge unemployment crisis for the recent world. This creates a statement which has been debated since its birth i.e. whether AI is a boon or a curse? Or whether the minds of the architects is much better than the artificial intelligence?

For us architects there is always a dependence on AI which understands, interprets and grasps visual input on the computer and helps us to design and create what the user needs.

With softwares like grasshopper, revit, rhino, dynamo, bim, flamingo, etc which are wielded by big architects as it endows them to create parametric forms which tend to be impossible without AI softwares. They extract the maximum use of these softwares to minimize working time and to track building projects. Instead of living in box like homes, we can have our dreams fulfilled with customized homes with the AI technology of 3d printing drones. All the grunt work we do as architects could potentially be automated.

The use of AI can have some negatives in the architectural course. AI, unlike humans can't create something which fits the client's personality and style. They don't understand the psychology of the clients like us. Architects can help the AI to design a home that fits the client's character in a way that they never thought was possible.

In conclusion, artificial intelligence can never overcome the creative minds of architects nor can they displace employment in the field of architecture. While we wait for a renaissance to reoccur and enhance the trend of architecture, let's hope that it creates a positive impact in the turning point of architectural history.

- AYESHA ZAHRA  
4TH SEMESTER



# AAAD - 3RD YEARS







## Go Adventure in India

HOT AIR BALLOON  
PARAGLIDING  
BUNGEE JUMP  
PARASAILING  
FLYING FOX



## Expedition Packages

ZANSKAR TREK  
MOUNTAIN BIKING  
MOUNTAIN HIKING  
BULLET EXPEDITIONS  
GANGA RIVER RAFTING EXPEDITION  
PARAGLIDING EXPEDITIONS  
FROZEN LAKE TREKKINGS  
TRUND TREK  
HAMPTA PASS TREK  
RANN OF KUTCH  
ROOPHUND TREK  
CHANDRA TAL LAKE TREK



KUTCH MAHOL SAV  
NAINITAL KUMAONI FESTIVAL  
KUMBH MELA FESTIVAL  
GANGA AARTI-VARANASI  
GANGA AARTI - HARIDWAR/RISHIKESH  
THRISSUR POORAM  
KULLU FESTIVAL



## B2B specialists in

KERALA | GOA | KARNATAKA | JAMMU & KASHMIR  
KULLU MANALI | RAJASTHAN | GOLDEN TRIANGLE  
LEH LADAKH EXPEDITIONS | SPITI VALLEY EXPEDITIONS  
GANGTOK-DARJEELING | ANDAMAN & NICOBAR



MALAYSIA | THAILAND | PHUKET | BALI | KRABI  
HONGKONG | MACAU | SRI LANKA | NEPAL  
BHUTAN | CAMBODIA | VIETNAM

## Pilgrimage trips

BODH GAYA | VARANASI  
HARIDWAR | MANASAROVAR  
RISHIKESH | BADRINATH  
KEDARNATH | AMARNATH  
MOSQUE TRIALS | AJMER







LEO  
EVENTS & TOURS



MANACAUD P O , TRIVANDRUM, KERALA 695009

Branches : LEO EVENTS & TOURS HUB, 84/85 INFANTARY ROAD, BANGALORE-560001  
& DELHI | DUBAI

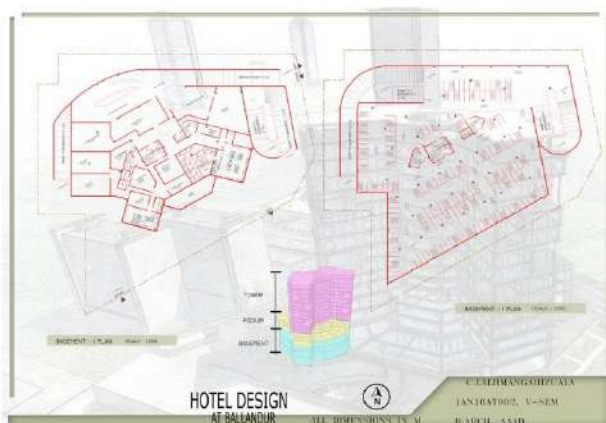
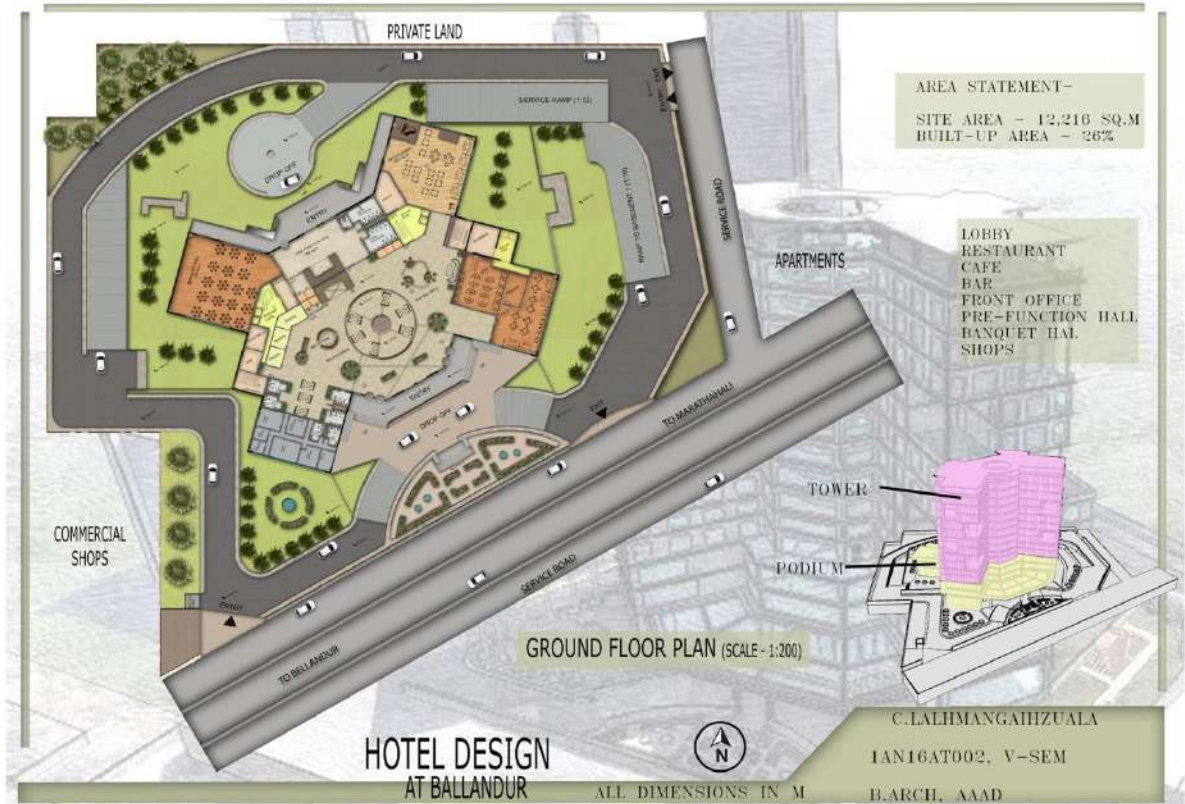
☎ 0471 2455215, +91 9037264535, +91 9809755275, 9745054004, 8086554636 ✉ [booking@leoeventsandtours.com](mailto:booking@leoeventsandtours.com)

🌐 [www.leoeventsandtours.com](http://www.leoeventsandtours.com) 📘 [facebook.com/leoevents666](https://facebook.com/leoevents666) 📷 [leo\\_events\\_tours](https://instagram.com/leo_events_tours)

32 FRES CO  
2<sup>nd</sup> EDITION | April, 2019









# 5TH SEMESTER



IFHAM NADEEM



NITHYODAYA

LALMANGHAIZUALA





# FASHION FALLACY

**W**hat is Fashion? According to the dictionary fashion is - a popular or the latest style of clothing, hair, decoration, or behaviour/ a manner of doing something. What makes fashion a phenomenon of cosmic proportions? Most might argue it is the clothes that drape our body and the a la mode jewellery that we adorn. On the contrary, it is about the people that wear them.

The religion of beauty is far from aesthetics. Beauty to an artist is vastly contrasting to what beauty is to a layman. An ordinary eye seeks beauty in proportion, symmetry and harmony; but an artist's perspective, independent to these details, looks at a greater expanse. They are drawn towards the eccentric and imperfect. Discovering beauty in the gnarled is an unmistakable virtuosity.

Fashion is often misinterpreted as placing an exorbitant value to superficial beauty, considered to flatter one's vanity even. Fashion is beyond. It is an idea; it is a story, and a language. In Blair Waldorf's words "Fashion is the most powerful art there is. It is movement, design, and architecture all in one. It shows the world who we are and who we'd like to be." It speaks of art and history and culture.

Fashion demands to have an opinion, to create. Fashion does not discriminate. It speaks volumes of the potency of one's thoughts and beliefs. It manifests as significant choices. It is a catalyst for a positive self-image and stimulates individuality.

The idea of fashion is ubiquitous; it is ever changing and constantly evolving. Hence, fashion is a global sensation that speaks to the masses bringing them together.

-POOJA PAWAR  
6TH SEMESTER



# INDIAN CUISINE

All the way from tongue tingling curries to heart warming rotis to delicious biryani to juicy kebabs and all the different types of mouth watering sweets and not to forget the unique blends of different types of beverages, Indian cuisine has got it all!

Indian cuisine is very flexible and consumer friendly in nature. You can go all the way from super spicy to super sweet, to sour, to tangy, bitter, fried, baked, nutritious, oily, and anywhere in between, however you want it to be.

The speciality of each state is unique and the mode of preparation also varies. The use of spices is the main element in the country. There are about 20-30 basic spices and can be used in infinite ways depending upon the chef and the dish. Each spice has its unique taste, smell and health benefits and thus the widespread use of each of them.

Influence of other cultures such as Persian, Mughal, Portuguese and European have played a major role in contributing to the marvellous flavours, blending in and creating a whole new world of taste and emotions. The Northerneastern cuisine which is a unique blend of oriental and local flavours is a perfect example of this.

Most of the Indians love meat and hence the wide variety of meat curries, fried meat, grilled meat, meat biryani, seafood, seafood curries and what not. This caters to all the hungry non-vegetarians out there but here we all are, saying, "pait bharega par neeyat nahi".





Another unique factor is that it respects all aspects of the various religions in the country where some of them prohibit the use of meat or sometimes roots in their meals. This factor is not a drawback as the Indian cuisine provides an equally fair share of extraordinary vegetarian dishes, meals, curries, fried items, etc. to fend for their diet.

Do you want to know another secret of ours? We create worlds of flavour within worlds of flavours. How? We use specially prepared condiments called chutneys and pickles(achaars) which are again carefully crafted by skilled homecooks. They go along well with almost any dish and will leave you drooling for more.

Hang on in there even if your mouth is watering for I'm about to dive into the world of sweets. From rasagollas to jalebis to kheer, to jaamuns, kesari baths, mysore paks, laddus, halwas and many more, the ambiguity of this dimension is what I recall.

If this didn't satisfy you enough, don't be disappointed, the realm of chaats is awaiting your arrival and to top it all, the refreshing beverages are on the list too. Pani puris, kachoris, vada pavs, pav bhaji... I'm pretty sure you know them all by heart. Whereas for beverages, specially crafted Indian beers, lassis, buttermilk, bhaang, badam milk and never to forget the most savoured of them all - chai. Coffee is produced in vast quantities in the south and is savoured as well.

So to wrap it up, one can safely say that Indian cuisine is the most diverse cuisine one can find to cater to everyone's needs, wishes and desires. So now I'm off to satisfy my hunger pangs, bon appetite!

-NUHA FATIMA  
2ND SEMESTER



# AMATEUR IN BIOMIMICRY



Photo - Northrop Grumman

## Ideas and perspectives in light of the topic 'Bio-mimicry'.

Ideas form the base for every design. People have been trying to derive ideas from various sources, one of the most extensively used being the natural elements or the biotic universe around us. People have always been fascinated by nature and its children, we try have been trying to get the positives out of it for a very long time and have become somewhat good at it too, which has led to a whole new dimension of concepts which is broadly classified as BIO MIMICRY. Bio mimicry doesn't restrict itself to just deriving forms, but also functions.

Humans have been deriving inspiration from nature for a long time now which has led to many inventions and innovations. For example, starting from a simple dart to the airbus A380, a bicycle to top of the class F1 cars, all follow the principle of aerodynamics. We boast about the knowledge we have on aerodynamics but we must admit it's just the knowledge we have gained by studying nature. There is a misconception that bio mimicry is always about the derivation of form but functions are also derived both directly and indirectly from nature. Architects have showcased smart applications of bio mimicry for a long time now, at the same time works of many can be related to bio mimicry even though it has not been used. Nature is vast, so are the mechanics involved in it. We can find influence of nature in almost everything created/ designed by man. This brings us to a conclusion, everything we do, build, design is Bio Mimicry. But we cannot instantly come to that conclusion, but , we often say that we follow modernism, neo-modernism, futuristic designing methods. But do we ever think of the point that the technologies which we use were once just inspirations we got from nature or were they truly fresh ideas which were totally isolated from nature. As I pointed out earlier, the world's largest passenger airplane Airbus A380 has its function as well as its form derived from the Great American Eagle. We can point various such examples or just declare everything around us as examples. Bio mimicry is a topic which totally depends on the perspective of the person who is trying to perceive the relevance of the object with nature or is trying to differentiate from it.

-Ar. WILLIAMS,  
Founder & Creative Head  
ARCHROME STUDIOS



# BA SING SE URBAN STUDY

Phoenix - Avatar: The Animated Series

Ba Sing Se is the capital of the Earth Kingdom as well as one of its constituent states, encompassing a large portion of the nation's northeastern corner. After the Surrender of Omashu, the city became the last great Earth Kingdom stronghold during the Hundred Year War. The city is by far the largest in the World of Avatar, essentially being more of a small country than a mere city. As a testament to its grandeur, the Earth Kingdom's roadway network is centered on the city.

Ba Sing Se means "Impenetrable City"; it is so named for its world-famous walls, the gates of which have no hinges or other hardware and are opened by the use of earthbending. Within the Outer Wall lies a large expanse of farmland, Lake Laogai, and several mountains. The Inner Wall encloses the city itself. The metropolis is also notable for having a unique system of walls dividing the populace into different parts of the city based on social status.



The city's Outer Wall has been breached on only four occasions: The first was by Fire Nation military forces led by General Iroh, the legendary "Dragon of the West". This attack, a part of his six-hundred-day siege of the city, was quickly driven back by the city's guardian forces after he was disheartened by the death of his son, Lu Ten. Years later, the Fire Nation used a great drill to bore through the Outer Wall, but Aang and his friends stopped the machine before the army could take advantage of the hole.



Photos - Avatar: The Animated Series

Ba Sing Se is divided into several major districts, with inhabitants sorted in various walled "rings" based on economic and social class. These range from the Lower Ring, a place of ghettos inhabited by refugees and the poor, to the Upper Ring, home of the Kingdom's ruling classes and the rich. Travel throughout the city, in addition to entering and exiting it, is provided by large, earthbending powered monorails, constructed during the reign of Earth King Yi Ming. The monorails meet in large transit stations, are free to the general public, and make travel within the city much easier. Citizens are free to travel between the Agrarian Zone, the Lower Ring, and the Middle Ring. The Upper Ring is a particularly exclusive area of the city; it is restricted to citizens with the personal invitation of a citizen of the Upper Ring, the government, or the Earth King himself.



### **Ba Sing Se Monorail**

The Ba Sing Se Monorail system has many stations around the city that have served as the backdrop to several events. Team Avatar first met Joo Dee at a monorail station and Jet realized that Iroh and Zuko were firebenders at a monorail station. Monorail stations are also located in near every part of Ba Sing Se, ranging from the Outer Wall to the heart of the city.

-Ar. WILLIAMS,  
Founder & Creative Head  
ARCHROME STUDIOS





# CARDBOARD PAVILLION AN ARCHROME WORKSHOP

Reusing cardboard to create usable spaces in 3 dimension. The objective of this workshop is to expose students to the world of 'Cardboard Furniture'. The workshop intends to explore the possibilities of cardboard as an aesthetic, biodegradable, waste material which can be made into a structurally viable option for space making.

**Archrome Studios** is a cross-disciplinary design initiative. We work on everything that kindles our design senses and feeds our hunger for quality creations. Design starts where you begin to see through solid blocks and visualize. The most satisfying part is just taking a sad piece of material and shaping it to make it our own, a reflection of our Ideas, 'A Reflection of Us'.

Models are now being very underrated after the extensive usage of digital models. Physical models are very important to bridge the gaps between **Idea-Design-Presentation**. Physical models help students to think in the physical space. This workshop was meant to shed light on some very interesting life size model making techniques which are essential to get high quality physical models.

Coordinated By :



Media Partner :

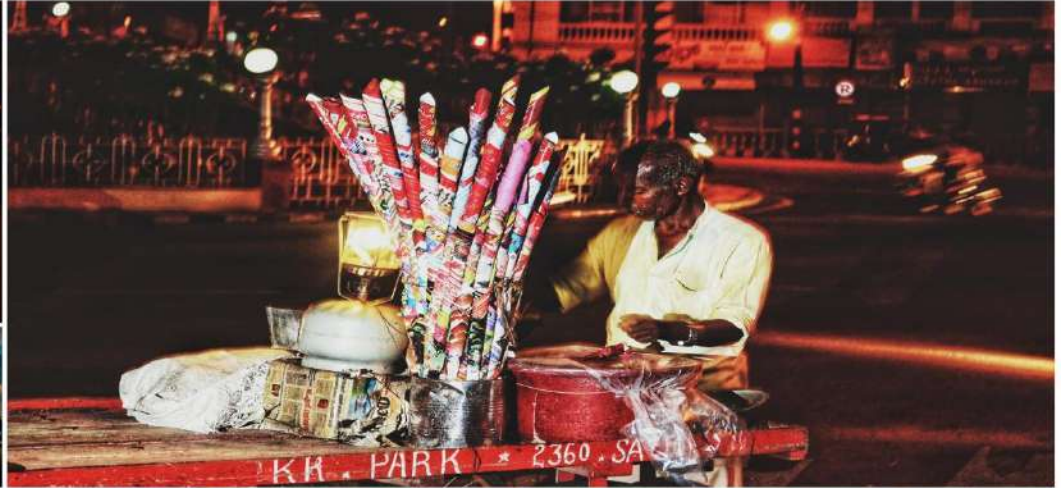




# AAAD - 4TH YEAR









# AKHIL MANIKYAM R - DESIGN 4TH YEAR

## DESIGN BRIEF

Due to rapid urbanization and inadequate land for expansion, cities are expanding vertically at an exponential rate. Studies on urbanization have found a strong correlation between sustainable built form, and energy consumption. As a result, new sustainable and smart building concepts are emerging with a focus on making the built environment more eco-friendly. In addition, one of the building typology that is clearly emerging as a result is mixed-use buildings. Mixed-use buildings are seen as effective solution to avoid urban expansion at large, as it encourages work, living, shopping etc., under one roof. The design of mixed use involves higher level of complexity in terms of architectural design, functional arrangement of spaces, structural challenge and services. In this studio, the proposed design is a mixed-use high-rise building in the core of Bangalore city in an identified brownfield site. The extent of the site is around 3.30 acres, abutting a 27 m wide road. The proposed mixed use high-rise building shall be self-sustaining in all aspects, such as in its energy requirement, waste disposal etc., students are expected to come up with a sustainable architectural solution for building(s) that form the part of proposed project, also demonstrate quantitatively how the proposed building is self-sustaining in all the aspects. The focus of the design studio shall be to explore various passive and active energy efficient solutions for a green building. The studio also encourages the students to explore energy modelling and simulation soft wares for their design.

**KEYWORDS:** High Rise, Mixed-use, Sustainability, Green Building

### OBJECTIVES:

- To understand the subject of architecture as an integrated field which works in tandem with Technology, Design, Economy, Ecology, Geography and Sociology etc.
- To rethink architecture as a non-wild ecosystem, which is self-contained and sustainable.
- To be able to identify and augment the right set of knowledge kit (from the learnt courses and electives) that will steer the approach to the brief in a strong direction.

### OUTCOME:

- In depth understanding of green concepts, be it vernacular, active energy efficient methods or projective models. Case study work should be presented as knowledge sharing exercise, through models, 3d models and explanatory diagrams.
- Building simulation models should be a mandatory output of the studio, to utilize software technology as an effective analytical and design management tool.
- The complexity of the project can be broken down into components and treated as one/two minor projects and one major component.

## LANDUSE MAPPING OF MG ROAD



Landuse	Area (sq. ft)
Residential	10
Commercial	10
Public	10
Landscaping	10
Landscaping	10
Landscaping	10
Landscaping	10

## CONCEPT



## FINAL FORM



## CIRCULATION DIAGRAMS

### FIGURE SHOWING OFFICE ENTRY RAMP ENTRY & EXIT

### FIGURE SHOWING COMMERCIAL ENTRY RAMP ENTRY & EXIT

### ENTRY POINTS

### EXIT POINTS

### DROP OFF POINTS

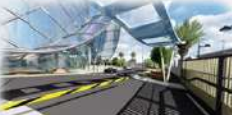
### PICKUP POINTS



### COMMERCIAL ENTRANCE SITTING AREA



### OFFICE ENTRANCE VERTICAL GARDENING



### COMMERCIAL ENTRANCE PORCH



### OFFICE ENTRANCE



## DRONE VIEW @ 250M TS



## TRAFFIC MOVEMENT ANALYSIS

### AREA STATEMENT

SITE AREA - 3.30 ACRES  
 3.30x4046sqm = 13394.56sqm  
 FAR - 4  
 13.594.56x4 = 54.378.24 (54,500)sqms  
 TOTAL BUILT UP AREA - 54,500sqms

TOWER 75%  
 4100sqms

VS  
 13500sqms

PODIUM 25%  
 13500sqms

### BYE LAWS

AVIATION LIMITS = 300 M  
 FIRE SAFETY DRIVE WAY SHOULD BE 8M  
 THERE SHOULD BE 10M SETBACK FROM THE SITE  
 SITE IS FOR COMMERCIAL USAGE  
 MG ROAD HAS AN F.A.R = 3.75 AS THERE IS METRO LINE RUNNING THROUGH THIS SPACE  
 THE F.A.R = 4

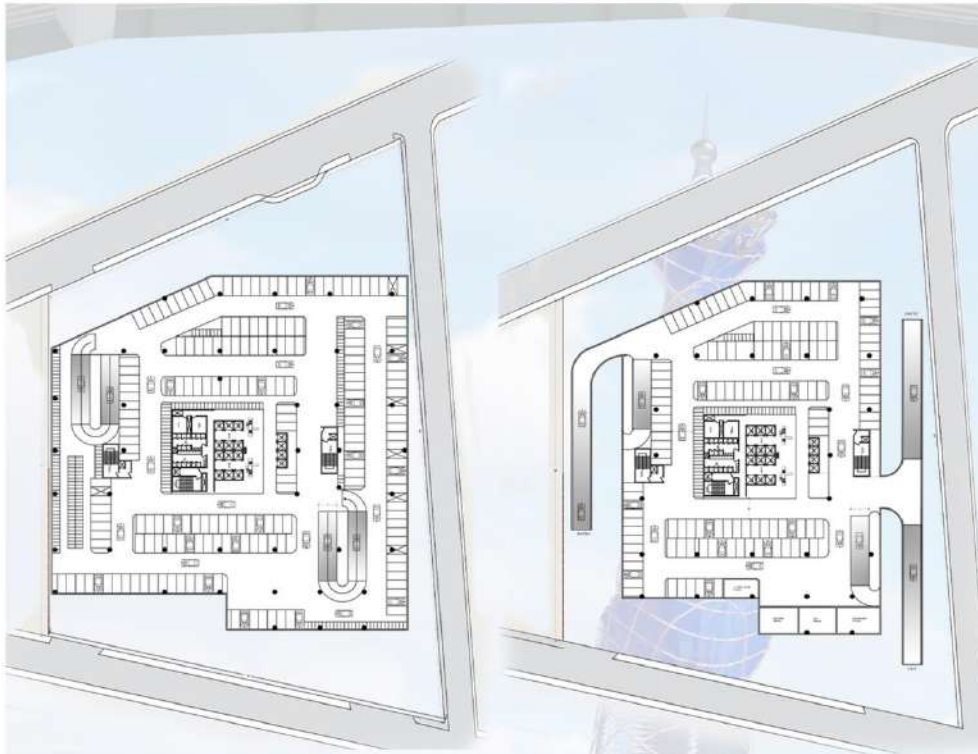


### COMMERCIAL ENTRANCE WATERBODY



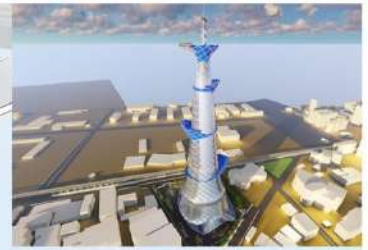
### OFFICE ENTRANCE





BASEMENT PLAN[-1]

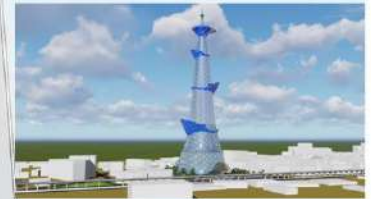
BASEMENT PLAN[-2]



DRONE VIEW @ 278MTS



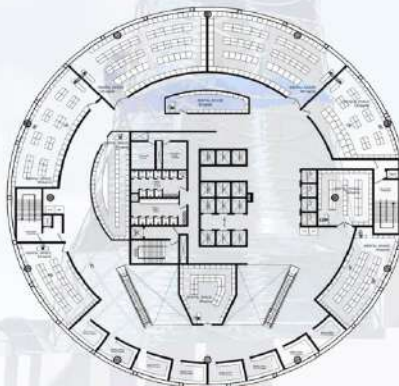
VIEW FROM MB ROAD METRO STATION



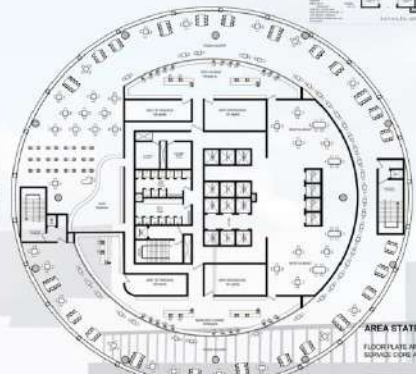
DIPLOMAN EYE LEVEL VIEW FROM 2KMS AWAY



1ST PODIUM FLOOR PLAN



3RD PODIUM FLOOR PLAN



5TH PODIUM FLOOR PLAN



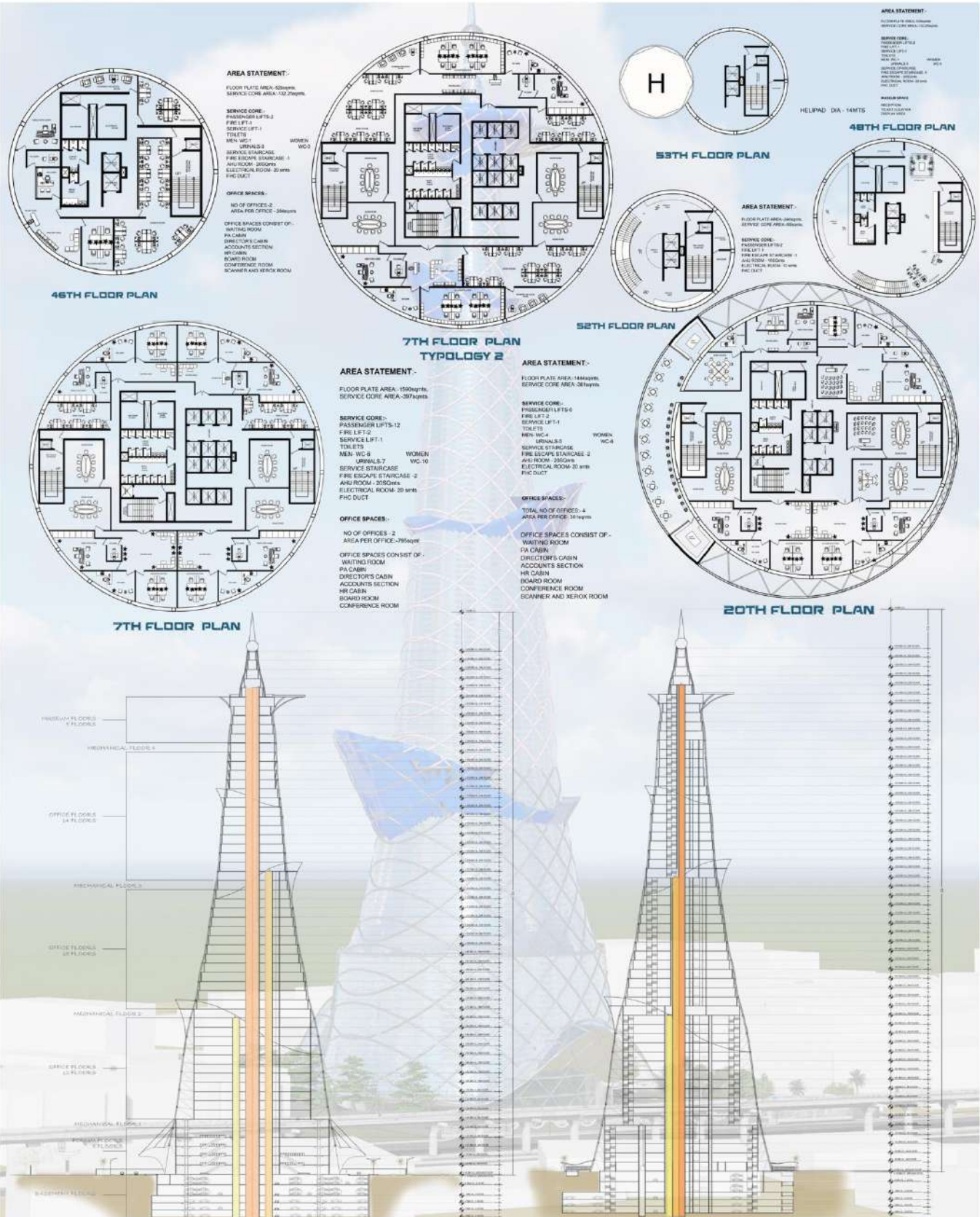
AREA STATEMENT:

FLOOR PLATE AREA: 278MTS  
SERVED: CORE AREA - 278MTS

SERVICE CORE:  
FIRE LIFT 12  
FIRE LIFT 2  
SERVICE LIFT 1  
TOILETS  
MEN - 10  
WOMEN - 10  
LIFT SHAFT  
FIRE ESCAPE STAIRCASE 2  
JURY ROOM - 100MTS  
ELECTRICAL ROOM - 20MTS  
FIRE SHED



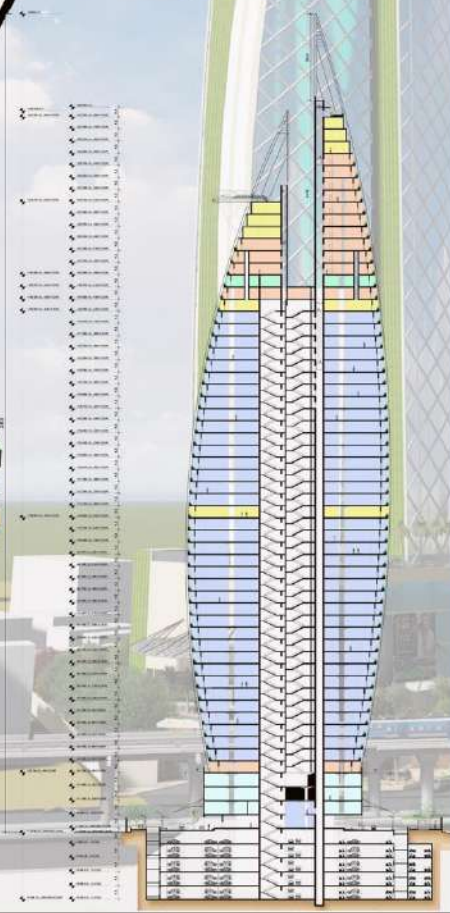
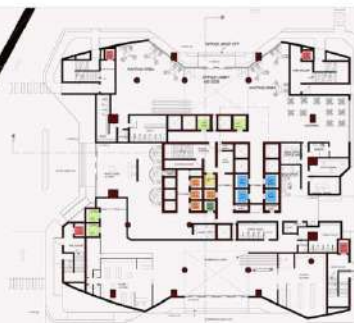
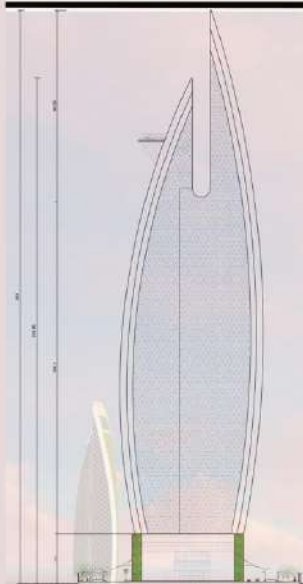




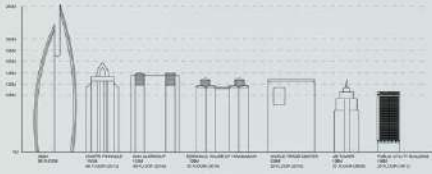


# DARSHAN JAIN - DESIGN 4TH YEAR

## THE LUSTER TOWER



# THE LUSTRE TOWER



BANGALORE TALL BUILDINGS AND HEIGHT

## LIFT CALCULATION

ASSUMING FLOOR PLATE AREA = 1200 SQM  
 AREA PER PERSON = 10 SQM  
 $1200/10 = 120$   
 LIFT HANDLING CAPACITY FOR 120 MIN(2HRS)  
 5400 PEOPLE PER FLOOR / 120 MIN  
 45 PEOPLE PER MIN  
 CONSIDERING 5 MIN WAITING TIME  
 $45 \times 5 = 225$  PEOPLE

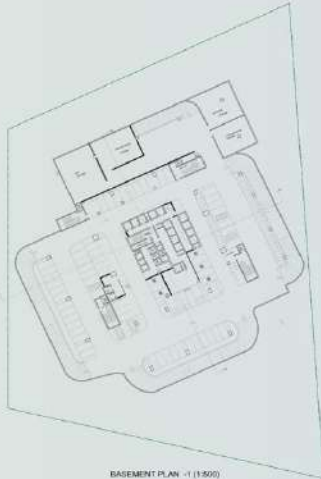
8 LIFTS OF 25 PEOPLE CAPACITY FOR OFFICE SPACE  
 3 LIFTS OF 16 CAPACITY FOR HOTEL SPACE  
 3 LIFTS OF 16 CAPACITY FOR SKY DECK  
 1 SERVICE LIFT FOR OFFICE AND MALL  
 1 SERVICE LIFT FOR HOTEL

## BYE LAWS

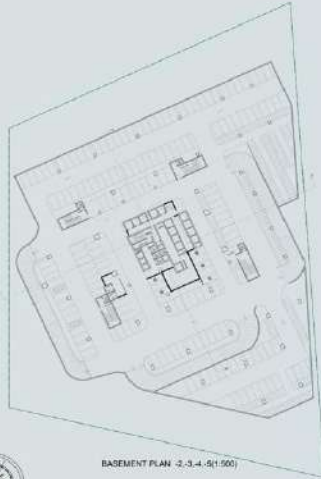
AVIATION LIMITS - 300 M  
 FIRE SAFETY DRIVE WAY SHOULD BE 8M  
 THERE SHOULD BE 16M JETBACK FROM THE SITE  
 SITE IS FOR COMMERCIAL USAGE  
 MG ROAD HAS AN F.A.R = 3.75 AS THERE IS MEVRO  
 LINE RUNNING THROUGH THIS SPACE THE F.A.R = 4

## CAR PARKING CALCULATION

FOR EVERY 50 SQM THERE SHOULD BE 1 CAR PARKING  
 FOR A COMMERCIAL SPACE FOR EVERY 30 SQM  
 FOR EVERY 2 ROOMS WE SHOULD PROVIDE A CAR PARKING AND 10% EXTRA



BASEMENT PLAN -1 (1:500)



BASEMENT PLAN -2,3,4,5 (1:500)



NIGHT VIEW



WORM-EYE VIEW



VIEW FROM THE FRONT BUILDING TERRACE



VIEW FROM METRO



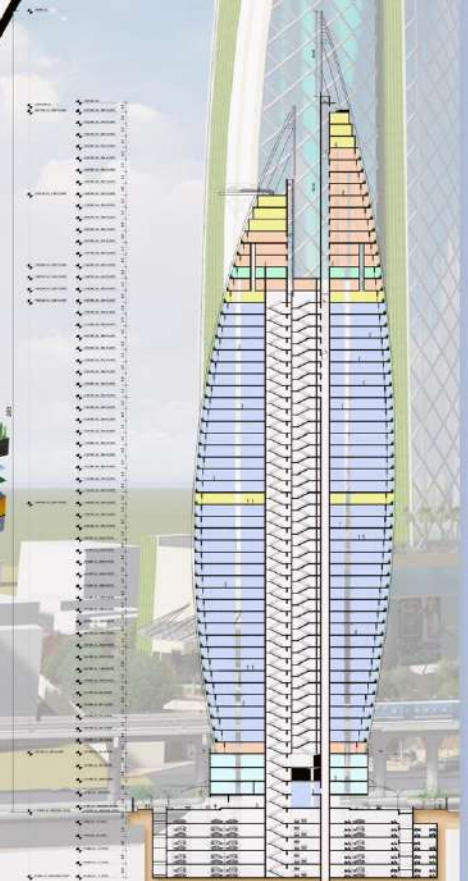
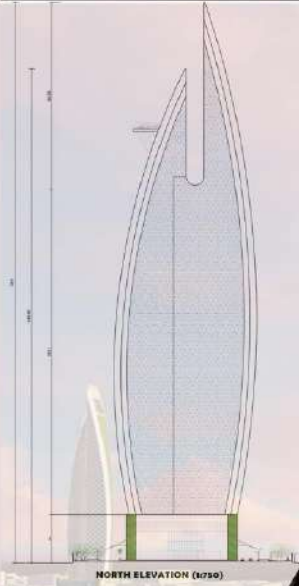
VIEW OF BUILDING FROM 800M. EVENING VIEW



DARSHAN A JAIN  
 IANISATOR  
 ADITYA ACADEMY OF ARCHITECTURE AND DESIGN



# THE LUSTER TOWER



ARCHITECTURE DESIGN 7

DARSHAN A JAIN  
IANISATOII  
ADITYA ACADEMY OF ARCHITECTURE AND DESIGN

# THE LUSTER TOWER



DARSHAN A JAIN  
JANISATATI  
ADITYA ACADEMY OF ARCHITECTURE AND DESIGN

ARCHITECTURE DESIGN 7





# STEERING WHEELS TOWARDS HORIZONTAL LIVING



The concept of vertical living is engrossing and appealing to most people moving into cities opting for high standards of living. With space running out in most cities and lateral growth slowing down due to space constraints, vertical growth becomes more and more sustainable. "VERTICAL LIVING" is yes a solution for sustainable living, but repulsive in terms of resilience of supertalls and social consequences. In fact most of us were raised single or double storeyed houses were all these high rise buildings are yet new to us. And there's also a fact that the cities are getting congested that we really have to grow upwards to accommodate the growing population. Gated communities offers enormous advantages assessed in terms of lawns and gardens, pools, playgrounds etc.. which is all over a ultimate package for today's peer group. Vertical living has heroed (stood up) over side-by-side living in terms of financial sense, safety, amenities etc.. other great benefits of apartment complexes are the social implications of closer proximity and connections one develops during their dwelling or residency.

Although sense of community exists in both rural and suburban areas, the close proximity of apartment life enhances the probability of creating life long connections. Although apartments fail when conceptualized in terms of freedom to redocart or redesign as there are shared walls which is ideally not flexible but the disadvantage has overcome these days by having exquisitely planned rooms sharing the walls and least corridor spaces viewing into neighbouring residences.

Apartments are usually found closer to the city where all facilities are not distant apart. Aside from independent houses getting heavier on the pocket for the similar amenities, constructing and moving into apartments, is the most practical choice. There is a misconception that apartments aren't spacious or lacks ventilation and lighting, it's actually all a matter of choice. Many apartments are as luxurious as villas plus the amenities. When it comes to endeavour the standards of today's living vertical living has pulled in chains of people.

Rifquth s.b  
4th sem



Architecture is becoming more dependent on technology so as to make our work load easier, but this new aspect of the field has brought new dimensions of study for students to master, but an average architecture student wouldn't be exposed to the nuances, and the multitude of choices available in the market.

The first thing you look for is the operating software, there is MacOS, Windows, and Linux to work with:

MacOS:

The suggested systems are iMac pro (Vega 56), iMac 27 inch, and the Macbook pro 15" RX 560x. In iMac pro (Vega 56) Vega 56 is the GPU, this is the best product from Apple, it is high end and expensive but in the long run it proves to be worth every penny. In iMac 27 inch, any of the three systems released from the 2018 edition is a good choice. MacBook pro 15" RX 560x is the only laptop in the MacOS system that can completely fill in the requirements for an architect and can satisfy the user for a long time, the only downfall is its keyboard as it is known for breaking in the contact of the slightest dust. If the user maintains it well, this system is highly recommended.

Windows and Linux:

Computer systems in the Windows and Linux operating systems are very customizable, and a prebuilt system will be very expensive, and the service can be a hassle.

In the mid-range budget, for Intel, the advisable specs are: An Intel CPU of Core i5 8th or 9th gen, a GPU of GTX 1050 ti or a GTX 1060 6GB, an 8 GB RAM, a 500 GB hard drive, and an SSD of 120GB, with any compatible motherboard.

For AMD, those are: A Ryzen 5 2600 or a Ryzen 5 2600x CPU, a GPU of GTX 1050ti or RX 570, an 8GB RAM, a 500 GB hard drive, and an SSD of 120 GB, with any compatible motherboard.

In the high-end budget, for Intel, the recommended specs are:

An Intel core i7 8th or 9th gen CPU, a GPU of GTX 1060 or RTX 2060, a 16 GB RAM, a 2TB hard drive, an SSD of 250 GB, with any compatible motherboard (Z370 (high end) or B360 (mid-range) are both compatible with the CPU's and can suffice the user.)

For AMD, the recommended specs are: A Ryzen 7 2700 or a Ryzen 7 2700x CPU, a GPU of RX580 or RTX 2060, a 16 GB RAM, a 2TB hard drive, an SSD of 250 GB, with any compatible motherboard.

Processors come with a k and non k version that signify whether the CPU can be overclocked or not. A k version is not recommended as an architect has very less use of it.

Laptops:

For a user who intends to buy a laptop, any one with GTX 1050 ti or GTX 1060 graphics will do the trick.

Disclaimer: As laptops are not designed for rendering very big projects or for any long-term intensive task, a recommendation is to have a powerful PC/Desktop to do the intensive work and then a less powerful laptop to do small task such as Photoshop, Autocad or lighter work in 3d rendering software.

In this case a Laptop with MX150, RX560 X or GTX1050 graphics will do you well for the long run.

-Ifham N  
Semester 6



# THEATRE, AND ITS IMPACT ON SOCIETY

To tell stories is one of the primary qualities of a human, to act it out, comes as an extension of that quality, and theatre provides a platform to express yourself in such a way. As Jacques says it 'All the world's a stage, and all the men and women merely players'. The theatre is a more realistic portrayal of life than any other performance art. It presents real or imaginary events for the audience, it allows us to experience a different life, and a different perspective for the duration of the play. It has, for all of humanity's existence, been a way for the community to come together. Since theatre was the only form of entertainment for a long time, it was the one event people would look forward to and identify with.

Theatre has been around for a long time, arguably since the Stone Age; this history that it has had, creates specific styles in theatre that is unique to a particular group of people, and this individuality brings a sense of identity to the people who share it. This role that theatre plays makes it an intrinsic part of cultures across the globe. The position that theatre has created for itself in pop culture is used heavily for the betterment of society. You are more likely to act for change as it gives you a more personal view of the cause.

There is a certain *je ne sais quoi* about performing in front of a live audience. Their reactions are taken as cues by the players and their acts slightly modify to suit their taste, thus, no two performances will truly ever be the same. This builds a certain bond between the players and the audience, which cannot be emulated by any other media.

The players and the characters they portray can teach us moral lessons: you learn about new locales, people, experiences, and perspectives. You see characters confront issues that plague societies. You learn about issues and problems people face that are different from your experience, you judge the actions these characters take and ponder on what the best course of action could have been. You have the liberty to have a favourite character, the liberty to hate a certain character, all on the basis of the qualities they possess. All of this happens from the safe space of being in the audience. You get to take these lessons home and apply them in your life, which hopefully makes you a better person.

Due to the smaller audience, reach, and negligible monetary gain; the actors, directors, and playwrights get to experiment and push boundaries as they don't have to agonize about mass appeal and other standard practices that a medium like filmmaking might face.

Theatre is both a mirror that shows us what we are, and a hammer that helps us shape our future self. It has been doing its job of bringing people together, and making their lives better long before the advent of any other source of mass entertainment and still holds its position as one of the most important. Film and the internet might have decreased the appeal of theatre among the populace, but these mediums themselves are influenced by it.

-MOHAMMED AHMED  
( 4TH SEMESTER)



# ORIENTATION DAY (2017)

Orientation day is a welcoming day for the newly arrived students to get to know their institution better. As this occasion commenced during the month of August, ar. Vidyadhar wadiyar, ex- president, iia karnataka chapter and ar. Vijay garg, president, coa were the chief guest and guest of honour respectively. They gave thoughtful insights to the students and encouraged them to embrace the profession of architecture. Students were uplifted with mementos for their academic achievements.



What crosses your mind when you come across the terms 'greek' and 'roman'? It would most probably be their marvellous statues and their architectural beauties which stand strong till today. Speaking of which, have you ever looked closely at the modern day Arc de Triomphe du Carrousel, The White House, the Jefferson Memorial or the House of Commons? If you didn't grasp it yet, they are cradled entirely into the arms of Roman and Greek architecture. Let me provide you with an insight as to how the Greek and Roman architecture influences our modern day buildings.

As we already know, the Greek architecture was so spectacular that you find parts of it in the Roman architecture as well. The simple use of the Doric, Ionic and Corinthian orders were the borrowed ideas. There are a number of elements used in the Greek architecture but columns, friezes, pediments and proportional design are an overall view of it.

Now, have you ever wondered where the use of bridges, aqueducts, complicated road systems and concrete originated from? It's all from the mighty Romans. Well it's true that the Romans may have borrowed some ideas from the Greek, Etruscans, Egyptians and Persians but what they brought forth by themselves has left a lasting impact even to this day on which we are heavily dependent.

# GREEK AND ROMAN

# REIGN OF

There are a few buildings which have the features of the Roman and Greek architectural styles, the most modern one being the Museum of Modern Literature which is a very direct quote of a Greek temple, followed by the House of Commons (Greek/Neoclassical architecture), The Arc de Triomphe du Carrousel (Roman), Union Station Washington D.C (Roman and Greek), Robert Street bridge (Roman) and the New York Public Library (Greek/Beaux-Arts architecture).

So, as the saying goes 'Rome was not built in a day' has quite the significance because of all the wonderful architectural aspects they created and we should be glad that it was not built in a day due to the precious outcomes of the timespan. Speaking of which we definitely cannot leave behind the inspiration of the Roman culture - the Greeks. Spectacular in their own ways, the Greek left behind the most important styles that we use in the modern world, one of them being the colonnades. Without these two ages we would definitely be missing out on many aspects in our architectural fields.

-Nuha Fathima  
(2ND SEM )



AR JYOTI KUMARI



AR NEHA SAHAY



AR HARSHITHA K V







# CYGNUS 2.0

## CARNIVAL





# AAAD - FACULTY







# GEO-POLYMER

There is a huge demand for structures like pile, poles, highway overhead signs and bridge substructures to be made from materials that are more durable in comparison to traditional materials and systems. The best example for such innovative material is Geopolymer cement.

Geopolymer is a type of inorganic polymer that can be composed at room temperature by utilizing industrial waste or by-products as source materials to compose a solid binder that looks like and performs as function to OPC.

The concrete encased column construction steel has been the commonly used has confinement. However it has been expensive for low cost housing and steel is faced through problems like corrosion particularly while used in corrosive environment.

Unplasticised Poly Vinyl Chloride (UPVC) tubes can be utilized for these low cost housing because of their low self-weight and economy. This form of columns is normally referred to as Concrete Filled UPVC Tube (CFUPVC) Where other different confinement materials has been used likes of GFRP and Jute fiber has become a popular in retrofit technique, It's been compared with unconfined specimen

The objective of this experiment is summarized below:

- Study the mechanical properties of the chosen concrete.
- To investigate the confinement of geopolymer concrete.
- To determine the effect of concrete strength, and the strength and ductility of the composite stub columns.
- To determine the effectiveness of UPVC tube, FRP and Jute fiber wrapping confinement on the concrete specimens.
- To determines the ultimate load capacity enhancement on the composite specimen.

The possible outcomes of the experiment would be the improvement of the compressive, the flexural and tensile strength due to the presence of fibers. This will also help in studying the advantage of using UPVC, GFRP and Jute fibers.



After a series of experiments the following was observed and concluded:

1. The use of ground granular blast furnaces slag and fly ash increases the compressive, flexural and split tensile strength of the specimen.
2. The confinement strength of GFRP fully confined specimen was came close to jute confinement strength. The highest confinement strength was displayed by UPVC confined specimens.
3. Geopolymer concrete (CGPC) specimens of UPVC tubes, GFRP and Jute fiber wrapping showed increase in compressive strength and confined geopolymer concrete with glass fiber (CGPCF) also showed an increase in compressive strength compared to GPC.
4. The enhancement in strength depends on the concrete strength and geometrical properties of the UPVC tubes.
5. CGPC are effective in confining concrete. The Confined strength values increased between 1.26 to 3.39 times the unconfined strength values (UGPC).
6. There was decrease in length and also increase in diameter about 3.5 mm decrease in length and 2 mm increase in diameter.
7. That the failure of CGPC and CGPCF specimens can occur by crushing or shear failure.
8. By adding fibers to Geo polymer concrete specimen it showed increase in failure load.
9. UPVC confinement can be used and its better compared to GFRP and Jute fiber its expansive in technology.



UPVC



GFRP



JUTE



GEOPOLYMER CONCRETE

Er.Satish.D, Dr.Ramesh Manoli,  
Asst.Prof.Er.Shiva Kumar KS



## FRESCO TEAM







# THE MUSE OF HUES

**A** long hectic day calls for a bit of respite. Little did we expect what was in store. Neither students and teachers nor juniors and seniors mattered, cross the entrance and you'd be raided by colour. 'Coming out with flying colours' was not just a phrase anymore. It metamorphosed itself into a factual happening.

Faces masked with splatters of coloured powder walked the vicinity of the college. With multicoloured teeth and dyed hair, teachers and students were finally one with each other. No discrimination nor any division, just undisputed entertainment and fun. From throwing paper rockets in class to dusters flying across the room, colour replaced all the classroom shenanigans.

As the sun set, the faces gleamed not just with colour but also with laughter. Colour covered the places undiscovered that were enclosed deep within us.

The day that broke the ice between the students and teacher with colours was Holi, the festival of colour which adorned each life with various hues. Xenophobia, caste, religion or creed, isn't a muddle that colour can't cover.

- SHALOM DEEPIKA DAVID  
4TH SEMESTER



# TRADITIONAL BREATHING SPACE IN BUILT FORMS – REVIEW OF COURTYARDS IN ATHANGUDI VILLAGE, CHETTINAD

- AR. K. SIDDHARTHA, ASSISTANT PROFESSOR, AAAD

## INTRODUCTION

Set in the middle of the universe, human beings needed a place of seclusion and peace, apart from the hostile and amorphous world outside. Space which receives its share of sun, moon, day, night, heat, cold and rain. As the courtyard is one of the most primordial forms of architectural styles, “courtyard styles” can be relevant for all types of buildings. Reynolds says about the courtyard, “...a special place that is actually outside but yet almost inside the building, open to the sky, usually in touch with the earth in many cases, but fully surrounded by the rooms”. The simple definition of the courtyard is it is the opening to the sky that is present inside a building. It is one of the most efficient features of the traditional houses of India. Researches on courtyard houses in the traditional societies have already proven to be useful and respond to the cultural and the climatic response.

The ideology of the courtyard is handed over from one generation to another as a cultural heritage, symbolically and conceptually. Since certain psychological, biosocial and cultural characteristics of the human beings continue to be influencing certain characteristics of the built environment through the ages, courtyards survived the history and continue to be relevant in the field of architecture. The courtyard’s function depends on its location in the building. The courtyard has either a direct or indirect effect on the behavioural and psychological aspects of the residents of the building by bringing in the sun, wind, rain and sky as a part of the interior of the building, throughout the year.

## COURTYARD BRIEF HISTORICAL EVOLUTION OF COURTYARDS

The first courtyard houses according to the historical evidence provided, appears to have originated probably around 6500-6000 BC, the best evidence is the earliest village from Mehrgarh. Paul Oliver wrote in his book ‘Dwellings: The House Across the World’, “Courtyard houses have an ancient history: examples excavated at Kahun, in Egypt, are believed to be 5000 years old, while the Chaldean City of Ur, dating from 2000 BC, also has houses of this form”. But the precise evolutionary path still remains undetermined. Generally, the courtyard house is one which has rooms around an open-to-sky court. It has evolved to evade the harshness of the arid climates in the Middle Eastern countries. However, Hinrichs observes that “Time, civilizations, even climatic conditions seem to have very little effect on the courtyard style house as evidenced by history”. Mesopotamia, Indus Valley, Egypt, China, Rome, and Greece, the dwellings of these ancient urban civilizations all bear evidence of the fact that the “courtyard form” is timeless.





## **COURTYARD FORMS AND ELEMENTS**

The basic courtyard form of dwelling can be rectangular or cubic, round or curvilinear, but it's not fixed. The courtyard forms have been particularly modified to adapt to the building orientation, site restrictions, and topography and also to create formal shapes to increase the adaptability and flexibility in planning, such as in the L, U, H, T, V or Y shaped plans. Sullivan observes that "The size and scale of a courtyard can vary from intimate to quite spacious. Maintaining the proportion and scale of the building is important to allow for ample lighting and ventilation for the courtyard".

## **COURTYARD HOUSES**

A courtyard house is one which has rooms arranged all around the central courtyard. The rooms open out to the corridor that is connected to the courtyard and covered with roof projections. A courtyard can be ideal for hot and humid climate regions as it draws in cool air and circulates it within the interior of the building and also replaces foul air and increases the comfort. The courtyard form will satisfy the needs of traditional joint family systems in India. The courtyards throughout history functioned well as a thermostat to the rooms surrounded by it and balanced extreme weather conditions by moderating the effects of Indian summers and winters.

## **CLIMATIC PRINCIPLES: CASE OF 75-YEAR-OLD ATHANGUDI/CHETTINAD HOUSE**

### **CLIMATE OF THE REGION**

The type of weather that is prevailing in the Karaikudi region is hot and humid with an average relative humidity of 63% and the temperature of a maximum of 37 degrees and a minimum of 24 degrees. The monthly average rainfall for this region is 75mm.

### **ORIENTATION OF THE COURTYARD IN THE HOUSE**

The entrance of the house faces east. Through the central courtyard, more light enters the house. A garden on the west side provides fresh cool air into the house in the day and in the night, the heat absorbed during the day is radiated out by the courtyard. The temperature of the house is controlled by the courtyard through its thermostatic nature. More air is drawn towards the courtyard due to its low pressure. The orientation of the building is by the cardinal directions. For example, on the North or East walls, more openings are given to get abundant light and air but in the western side, fewer openings are provided, as the west side gains more heat, which is not required for this hot and humid climatic condition.





## DAY AND NIGHT ANALYSIS OF THE COURTYARD

As the temperature is higher during the day, a small amount of heat is absorbed by the central courtyard's floor as it is open to the sky and light tends to reflect from different directions. As the roof is sloped, heat from the sun will travel towards the central courtyard which creates a negative pressure. This negative pressure created inside during the daytime escapes out during the night time.

## WINDOW PROJECTIONS AND COURTYARD

There is more than one type of projection used depending on the length of the window. They are made by wooden shutters as U value of wood is less. The window projections open to the corridors around the central courtyard so as to prevent the direct entry of light, which helps in reducing glare and radiation without obstructing airflow and also to maintain the IAQ. The windows are mostly closed in the day and open in the night to prevent excessive heat gain.

## ROOF PROJECTIONS AND COURTYARD

The roof is projected 0.26-0.6m into the courtyard so all the rainwater can be collected in the drain in the courtyard and also provide shade to the corridor surrounding the courtyard, reducing heat intensity.

## THE GRID AND THE COURTYARD

A grid system was followed regardless of the site. The grid was flexible so that it accommodates any site condition. The grid system was sustainable in terms of economy and also the speed of construction. The grid was not always simple or symmetric. Curvilinear grids and complex geometry were also adopted. Ayugma or the odd grid is the grid where the centre is a square and used for large scale houses and also called as the 'lung space' of the house. To ensure there is a courtyard in every house, the centre is never built and is called as the Brahmastana, the genius loci of the house.

## ENERGY AXES AND CROSS VENTILATION IN THE COURTYARD

Energy axis is a row of openings aligned in the same line. The East-West energy axis is called as the Brahmasutra and the North-South energy axis is called as the Somasutra. Both of these axes should meet perpendicularly in the centre of the courtyard so that the cross ventilation axes would intersect in the courtyard's centre. The courtyard functions as a light well and provides some aesthetic counterpart, and it serves for a variety of purposes. It is not separated from the living cum dining room and is also used as a storeroom. The space was mostly used by the women of the house. It is being used more as an additional room in the house rather than a transitional space between the indoors and the outdoors. The proportion is the main thing that contributes to this effect.





## ANALYSIS AND INFERENCE

In the typical traditional Chettinad house, the courtyard will be the primary element of the house as it functions as both the light well and the ventilation shaft. The courtyard is the element that moves vertically from ground floor to roof and it should be open to the sky to fulfil its basic requirements.

The main aim for providing a courtyard is to provide an escape point for the heat gained by the house during the day time and to create a stack effect, as the hot air always tends to move upwards. And to make sure that the inside and outside of the house can be clearly defined in the hotter months. A courtyard functions as a protective shell by keeping the outside heat away and providing a microclimate for the house with proper shading and cooler surfaces, which will be the basic requirements of the occupants as a response to the daily temperature due to solar radiation. Though the thermal capacity of the materials used in the building will hold the primary key to achieve the thermal comfort of the building, adding a courtyard will help improve it of the building. During the summer season, the capacity of the building to reradiate the heat gained during the day to the night sky will definitely not equal to the daily radiations that the building received. Due to this the required thermal comfort will not be achieved. So by adding a courtyard, achieving this will be easy.

A courtyard is often the place for washing clothes; dishes etc., The residents of the Chettinad house wash their courtyards a few times a day to keep the dust away. Thus the pattern for providing evaporative cooling within the house counteracts the heat gain that increases from the solar radiation over the summer months. Since the thermal capacity of the carved wooden pillars in the corridor around the courtyard is low that reduces the incident solar radiation up to an extent. Although the horizontal openings create more heat gain in the building by heating up the larger open interior mass throughout the summer season, it has been kept from too much heating by daily household activities. The house is flushed with cool air during the night time and hot air will be sucked away through the stack effect. Courtyards act as an air funnel by the stack effect concept and it can also act as a suction zone, sucking the air from the open to the sky. The courtyard will improve the thermal conditions of its surrounding spaces at night time if provided sufficient openings on those spaces. The rooms facing the courtyards should have double sided ventilations; otherwise, the speed of the air will be reduced. Larger window openings towards the main courtyard will improve the cross ventilation. But in the house itself, the effect of the courtyard is more on the ground floor since the rooms surrounded by the courtyard are nearer to it than the first floor.

## CONCLUSION

The position of courtyards or any open space decides the uses and its pattern of use. There are no other derivatives of the courtyard that can replace the feel and functional requirements (such as lighting) of the courtyard. Major alterations to the courtyard can completely give a different sense of space and utility. The courtyard is the "key element" that has established its vital role of importance in society and in the field of architecture.





**W**hile a pack of 26 students stumbled through the buzzing crowds of the railway stations with luggage dragging behind, hearts filled to the brim with undeniable happiness and excitement, unable to contain their joy the North India Tour had begun.

The journey began with a 36-Hour train travel. After a tenuous long wait, the teeth biting cold of Agra didn't fail to awaken our bodies and there we were, sitting with several layered sweaters, fists clenched and bodies shivering. As the train halted, we stepped down and the cold breeze kissed our cheeks giving us a 'Cold' warm welcome into the TajNagri.

What could be more exciting than having to witness one of the most Jaw Dropping marvels of the world - The TajMahal. The mesmerizing beauty of this marvel filled us with awe. The astounding structure speaks volumes of its meticulous details, profound geometry neat edges and the striking reflection of the White Marble hitting our eyes – how soothing it was – a site for sore eyes.

Further, we proceeded to Fatehpur Sikhri – The Mughal complex. Walking through the many buildings of the complex seemed like we had set foot into an ancient city full of beautiful structures each one speaking of its own significance holding within it deep long stories of the Mughals. Wrapping up with Agra we visited The Agra Fort and several other monuments from where The Taj Mahal appeared in its silhouette self peeking through the fog making a Misty Appearance.

The next destination being Delhi, the busy capital city, made sure it pinched our pockets as the shopping at Karol Bagh and Sarojini bought us a dozen of smiles as well as made our hearts and wallets feel lighter.

We were off to the Golden City – Jaisalmer. After a long night journey we woke up the next morning to the sand dunes that set our gaze onto the splendid views the city had to offer. The dusty parched land awaited our presence with cozy little camp tents. As the sun set we went zooming through the dips and highs of the vast captivating desert dunes, cutting through sharp turns and sudden sloping heaps of sand, the Jeep Safari surely did make our hearts skip a thousand beats and our screams skipped a thousand Hertz leaving behind a Note-Worthy unforgettable drive.





As the sun kissed the outline of the desert, we returned back with sand-filled toes and tired feet, to our tents only to find a Rajasthani cultural function arranged for us, after which the beautiful day came to an end. The next day we walked through the narrow streets of the city observing buildings, glowing with sandstone, and strikingly adorned with exquisite details and Traditional Architecture. A visit to the Gadisar Lake and the ruins of the Kuldara Village marked the end of the Jaisalmer Stay.

We were all set to leave for Kullu – The Valley Of Gods as it is known. The dale welcomed us with its Bitterly Cold temperature offering a wide range of views of running waters through cuts and rocks and snow capped mountains. We made way in Kullu and started off with the thrilling experience of river rafting. Rowing through the freezing cold water of the beautiful Beas River surrounded on all sides by exotic views of massive snow clad mountains and picturesque trees, the 40 minutes of rafting left behind an amazing experience with paragliding adding to the bliss.

As the stay in Kullu ended, the snow filled land of Manali awaited our footsteps. Wrapped up under an abundant layer of clothes like furry little rabbits trying to resist the cold, the Sub-Zero temperature of Manali made its arrival evident. The snow point in Manali left us filled with Awe. While we just gazed excitingly at the panoramic views at the Snow Point, Tiny little snow balls made its way to hit our faces and we couldn't stop indulging ourselves in throwing them back. The Zero Degrees added a million zeroes to our trillionth amount of delight. The next day we explored the Jari Village, calm and composed with lush greenery and beautiful landscapes. We walked through small streets to the houses built in Kathkuni Style Of Architecture after which the visit to the heavenly Kasoul Village marked an end to the Himachal Stay.

Next in line was Chandigarh – The City Beautiful. This well planed city induced a handful of knowledge as we walked through a few sectors and noticed the flawless organization of sectors in Chandigarh. A visit back to Delhi and a stroll through the Red Fort marked the end of this phenomenal trip.

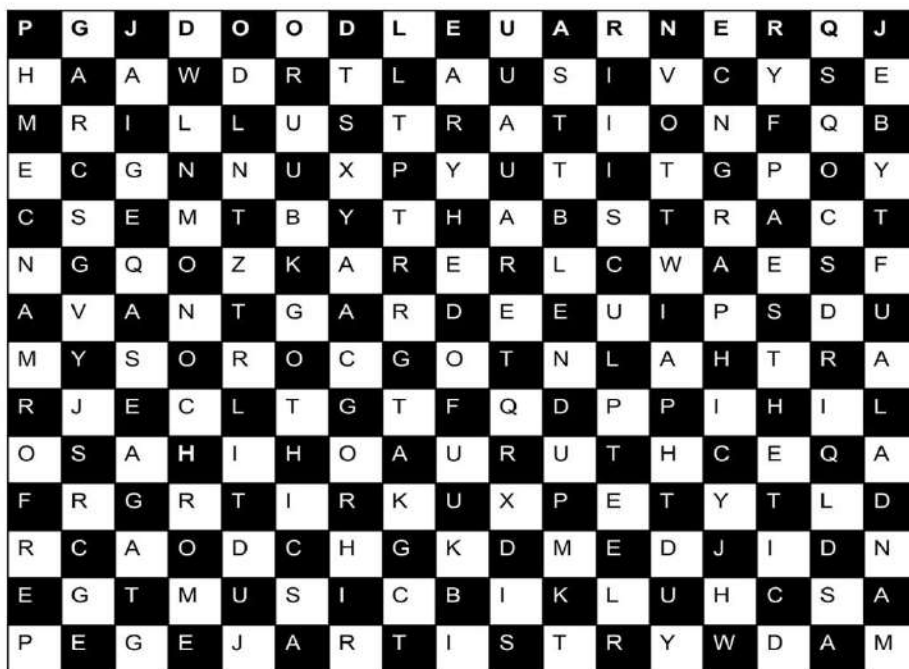
Walking through a variety of lands, sauntering through heaps of sand dunes, waddling through the paths of Manali with legs engulfed by snow, encountering diverse climates, the whole trip served as a splash of vibrant colors adding dynamic hues to the best lived memories of life. Those are the days we live for.

-ARSHIA MEIRAJ (4TH SEMESTER)

AROUND THE NORTH IN 15 DAYS



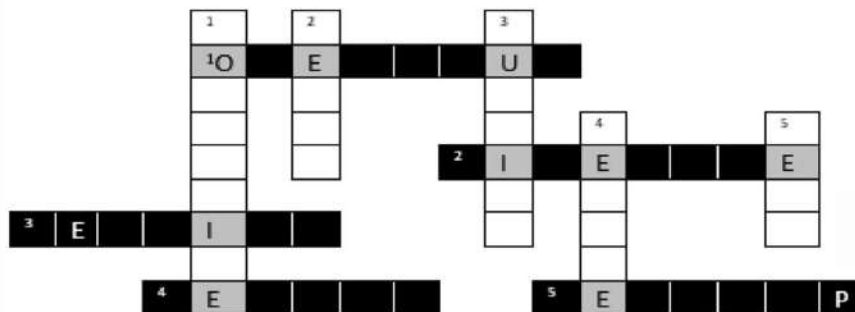
## WORD HUNT



CRAFT  
ARTISTRY  
AVANTGARDE  
BAROQUE  
GRAPHIC  
MONOCHROME  
AESTHETIC  
ABSTRACT  
CREATIVE  
GOTHIC  
VISUAL  
SCULPT  
BLEND  
PERFORMANCE  
PAINT  
DOODLE  
SKETCH  
ILLUSTRATION  
MUSIC  
MANDALA

## CROSSWORD

ACROSS  
1-modernize  
2-debug  
3-furbish  
4-revive  
5-mend  
DOWN  
1-develop  
2-build  
3-revive  
4-furbish  
5-mend



NOITITUS

Down:

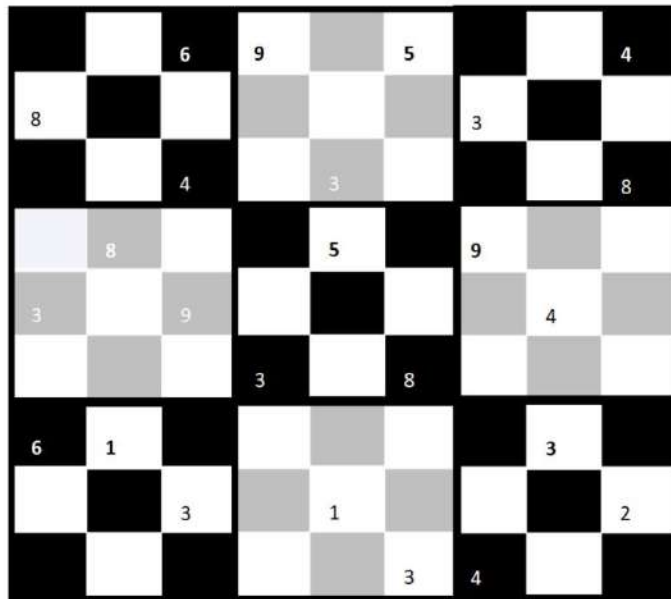
- 1: To make something more modern.
- 2: To remove mistakes.
- 3: To make something new.
- 4: To develop.
- 5: To repair something.

Across:

- 1: To bring complete change.
- 2: To make small changes in something.
- 3: To build something again.
- 4: To change something to improve it.
- 5: To start to happen



## SUDOKU



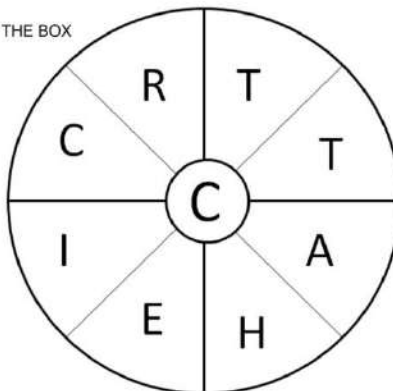
FILL IN THE GRID SUCH THAT EVERY HORIZONTAL ROW, EVERY VERTICAL COLUMN AND EVERY 3x3 BOX CONTAINS THE DIGITS 1-9, WITHOUT REPEATING THE NUMBERS IN THE SAME ROW, COLUMN OR BOX. YOU CAN'T CHANGE THE DIGITS ALREADY GIVEN IN THE GRID.



**GEETA SAREE CENTRE**

## SPELLATHON

10 WORDS- GREAT  
>20 WORDS- OUT OF THE BOX

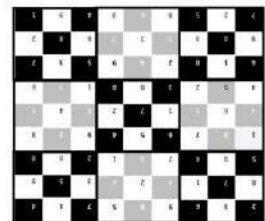


IN MAKING A WORD, EACH LETTER MAY BE USED ONLY ONCE. EACH WORD MUST CONTAIN THE CENTRAL LETTER. THERE SHOULD BE ATLEAST ONE 8 LETTER WORD. WORDS MUST CONTAIN A MINIMUM OF 3 LETTERS. PLURALS, PROPER NAMES AND FOREIGN WORDS ARE NOT ALLOWED.

ARTIC  
CACH  
CARE  
ACT  
ARC  
RACE  
CAR  
CART  
CHEAT  
TACTIC  
REACT  
RICE  
CRATE  
CHIT  
TECH  
CARET  
ARCH  
CHAIR  
CATCHER  
CATCH  
CITE  
ECLAT  
ATTIC

SUB WORDS:

SOLUTIONS:  
HEAD WORD-ARCHITECT



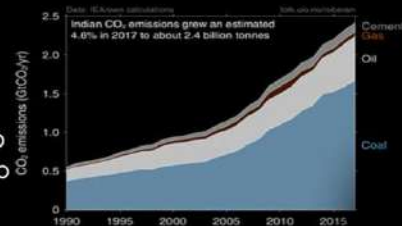
SOLUTIONS

# IMPACT OF CLIMATE CHANGES IN HUMAN SETTLEMENTS

-AR.SENTHIL KUMAR

URBAN CENTERS ARE NOT ONLY THE GENERATORS OF GREENHOUSE GAS (GHG) EMISSIONS, BUT ALSO AFFECT THE IMPACTS OF CLIMATE CHANGE. CITIES, AS CONCENTRATIONS OF LARGE POPULATIONS, ARE AT RISK OF THE IMPACTS OF CLIMATE CHANGE ON INFRASTRUCTURE, HUMAN LIVES, HUMAN HEALTH, PERSONAL PROPERTY, ENVIRONMENTAL QUALITY AND FUTURE PROSPERITY. 75% OF COMMERCIAL ENERGY IS CONSUMED IN URBAN AND SEMI-URBAN AREAS, 80% OF ALL WASTE IS GENERATED FROM CITIES AND 60% OF GREENHOUSE GAS EMISSION EMANATE FROM CITIES.

INDIA HAS BEEN PROGRESSIVELY CHANGING FROM A RURAL TO AN URBAN SOCIETY. IN 2011, 31% OF INDIA'S POPULATION LIVED IN ITS CITIES. BY 2039, THIS IS EXPECTED TO RISE TO 50%. AS CITIES EXPAND, THE IMPLICATIONS OF URBANIZATION ON THE PROVISION OF INFRASTRUCTURE SERVICES, ENERGY CONSUMPTION, GHG EMISSIONS, AND DECLINE OF NATURAL RESOURCES WILL INCREASE SIGNIFICANTLY.



## WHAT IS CLIMATE CHANGE?

- WHEN THE CLIMATE DOESN'T REMAIN CONSTANT, WE CALL IT CLIMATE CHANGE.
- A SIGNIFICANT CHANGE DEPENDS UPON THE UNDERLYING LEVEL OF CLIMATE VARIABILITY.
- HENCE IT IS CRUCIAL TO UNDERSTAND DIFFERENCE BETWEEN CLIMATE CHANGE AND CLIMATE VARIABILITY.

## KEELING CURVE: FIRST PHYSICAL EVIDENCE

THE KEELING CURVE IS THE MEASUREMENT OF CO<sub>2</sub> IN THE EARTH'S ATMOSPHERE. "KEELING CURVE" NAMED AFTER DR. CHARLES KEELING (1928 - 2005) OF SCRIPPS INSTITUTE OF OCEANOGRAPHY. THESE READINGS WERE THE FIRST PHYSICAL EVIDENCE THAT GHG WERE INCREASING IN THE ATMOSPHERE - FROM 314PPM IN 1958 TO 331PPM IN 1975.

## PREDICTIONS OF CHANGE TO COME

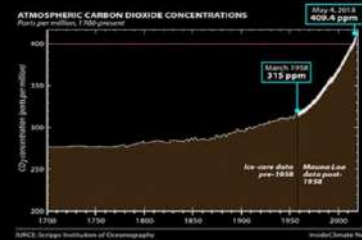
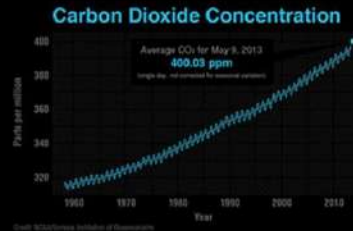
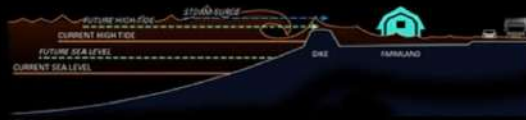
4-6°C INCREASE IN GLOBAL AVERAGE T IS PREDICTED TO BRING:

- A SEA LEVEL RISE OF 0.5-1.5 FEET (OR MORE) BY 2100
- WETTER WET REGION AND DRIER DRY REGIONS
- MORE FREQUENT AND MORE INTENSE HEAT WAVES
- STRESSED DRINKING AND IRRIGATION WATER SUPPLIES (MOUNTAIN GLACIERS)
- NEARLY ALL MULTI-YEAR SEA ICE GONE



## VULNERABILITY OF HUMAN SETTLEMENTS

- SEA LEVELS ARE RISING TWICE AS FAST AS FORECASTED.
- THREATENING HUNDREDS OF MILLIONS OF PEOPLE LIVING IN DELTAS, LOW-LYING AREAS AND SMALL ISLAND STATES.
- MORE THAN HALF WORLD'S POPULATION LIVES WITHIN 60 KM OF THE SEA. THREE QUARTERS OF ALL CITIES ARE LOCATED ON THE COAST. CLIMATE REFUGEES FROM RURAL AREAS AGGRAVATE THE MIGRATION TO CITIES.
- ONE BILLION POPULATIONS LIVING IN SLUMS ARE LIKELY TO BECOME ENVIRONMENTAL REFUGEES.
- UN PREDICTS THAT MILLIONS OF PEOPLE WILL MIGRATE BY 2020 DUE TO CLIMATE CHANGE AS MAJOR DRIVER.



WHEN SEA LEVELS RISE JUST MORE THAN ONE METER MANY MAJOR COASTAL CITIES WILL BE UNDER THREAT: BUENOS AIRES, RIO DE JANEIRO, LOS ANGELES, NEW YORK, LAGOS, ALEXANDRIA-CAIRO, MUMBAI, KOLKATA, DHAKA, SHANGHAI, OSAKA-KOBE AND TOKYO...ETC

## THE IMPACTS OF CLIMATES CHANGES ON CITIES

- EXTREME WEATHER EVENTS DAMAGE BUILDINGS AND URBAN INFRASTRUCTURE
- COASTAL CITIES AFFECTED BY SEA LEVEL RISE
- WATER RESOURCES STRESS: FLOODS AND DROUGHTS
- HUMAN HEALTH – MALARIA; WATERBORNE DISEASES; POLLUTED WATER
- FOOD SECURITY – LIVELIHOODS – TOURISM

CLIMATE REFUGEES MOVE TO URBAN SLUMS

## EXTREME WEATHER EVENTS AND HEALTH IN INDIA



UTTARAKHAND DISASTER (2013)

### DIRECT IMPACTS INDIRECT IMPACTS

DIRECT IMPACTS BY INCREASING THE FREQUENCY OF EXTREME EVENTS SUCH AS HEAT, DROUGHT AND HEAVY RAINFALL

### INDIRECT IMPACTS

EFFECTS MEDIATED THROUGH NATURAL SYSTEMS SUCH AS DISEASE VECTORS, WATER-BORNE DISEASES AND AIR POLLUTION, AND EFFECTS THAT ARE HEAVILY MEDIATED BY HUMAN SYSTEMS SUCH AS OCCUPATIONAL IMPACTS, UNDER- NUTRITION, AND PSYCHO-SOCIAL PROBLEMS

## LOSS AND DAMAGE DUE TO EXTREME WEATHER EVENTS

WHILE MONSOON FLOODS HAVE DISPLACED MILLIONS AND KILLED MORE THAN 1,000 PEOPLE IN SOUTH ASIA, PROLONGED DROUGHT IN AFRICA HAS DRASTICALLY COMMUNITIES' CAPACITY TO ADAPT TO SPECIFIC CIRCUMSTANCES. EVEN DEVELOPED NATIONS ARE ALSO NOT UNTOUCHED BY THE CLIMATE EXTREMES. THIS YEAR, THE US IS WITNESSING ONE OF THE MOST DESTRUCTIVE HURRICANE SEASONS AND ONE OF THE WORST WILDFIRE SEASONS. STRONG CATEGORY HURRICANES WERE SEEN RAVAGING TEXAS AND FLORIDA, CAUSING AN ECONOMIC LOSS IN THE UPWARDS OF \$300 BILLION. AT THE SAME TIME, MILLIONS OF ACRES OF LAND WERE BEING ENGULFED BY 'FIRESTORMS', DESTROYING SETTLEMENTS AND WORSENING AIR QUALITY.

## WE ARE THE PROBLEM AND WE ARE THE SOLUTION

UN-HABITAT ANALYSIS SHOWS THAT RATIONAL LAND USE PLANNING; GREEN BUILDING CODES AND ENERGY EFFICIENT TRANSPORT OPTIONS HAVE PROVEN, TO DATE, TO BE AMONGST THE MOST EFFECTIVE MEASURES THAT CAN BE TAKEN TO REDUCE ENERGY CONSUMPTION AND EMISSIONS. TOGETHER WITH WASTE RECYCLING THESE ARE THE MOST PROMISING AT REDUCING THE ECOLOGICAL FOOTPRINT OF CITIES.

## CONCLUSION

CLIMATE CHANGE MAY UNITE THE INTERNATIONAL COMMUNITY AND THREAT TO HUMANKIND. PEOPLE'S PARTICIPATION CAN BRIDGE THE GAP. IF CITIES ARE THE PART OF PROBLEM THEN THEY MUST BE PART OF THE SOLUTION. LOCAL AUTHORITIES CAN FIND LOCAL ANSWERS TO GLOBAL CHALLENGES. GOVERNMENTS NEED AN ACCURATE AND OBJECTIVE ASSESSMENT OF CLIMATE SCIENCE IN ORDER TO DEVISE POLICIES.





# IT'S ALL OUR WAY TO MAKE OUT ARCHITECTURE

CASE STUDY-HEALTH RESORT  
DATE : 04.08.2018

ORGANISED FOR: III Semester students

FACULTY : Ar Namrata, Ar Neha  
Ar Nandini, Ar Shilpa  
OBJECTIVE: Case study and site visit for the Architectural Design project of a Health Resort

DESCRIPTION: A case study visit was organised to Shathayu Ayurvedic and Yoga Retreat for the purpose of understanding the design and function of a health resort. Since the project is situated in proximity to hills and a lake, students studied the approach to design when a strong site context is present



ADITYA ACADEMY OF ARCHITECTURE & DESIGN , BANGALORE

SHATHAYU

# IT'S ALL OUR WAY TO MAKE OUT ARCHITECTURE

SITE VISIT  
DATE: 26/09/2018

ORGANIZED FOR:  
III SEMESTER STUDENTS

FACULTY:  
Ar. Nagendra  
Ar. Harshitha.K.V

OBJECTIVE:  
To understand the site conditions and Reinforcement details involved in designing of slabs.

DESCRIPTION:  
This study is to gain knowledge about different types of materials, types of slabs and reinforcement details involved in construction.



ADITYA ACADEMY OF ARCHITECTURE & DESIGN , BANGALORE

# IT'S ALL OUR WAY TO MAKE OUT ARCHITECTURE

VISIT TO DIVYASHREE ORION BUILDING

DATE : 14-09-2018

ORGANISED FOR : VII SEMESTER

FACULTY : Ar. Siddhartha ,  
Ar. Durga prasad ,Ar. Rabuil

DESCRIPTION: A visit to the Divyashree Orion Building was organised for the purpose of understanding the different requirements and design character a high rise building with mixed use consists of.



ADITYA ACADEMY OF ARCHITECTURE & DESIGN , BANGALORE





# SITE STUDY

## IT'S ALL OUR WAY TO MAKE OUT ARCHITECTURE

ACTIVITY SESSION-1  
DATE : 17/08/2018

ORGANIZED FOR : V<sup>th</sup> sem students

FACULTY : Ar Senthilkumar P

OBJECTIVE: To Analysis the Site and develop conceptual zoning for 3Star hotel Design.

DESCRIPTION: This analysis is use to study about an environmental factors of the site and their surrounding neighbourhood.

OUR WAY ARCHITECTURE

IT'S  
EVENTS ALL  
THE WAY DOWN

STUDY TEAM



AERIAL VIEW OF SITE



STREET SYSTEM



NEIGHBOURHOOD STUDY



3 STAR HOTEL SITE LOCATION



CIRCULATION STUDY



PHYSICAL FEATURES STUDY ON SITE



ADITYA ACADEMY OF ARCHITECTURE & DESIGN , BANGALORE



# URBAN FABRIC STUDY

## IT'S ALL OUR WAY TO MAKE OUT ARCHITECTURE

SITE STUDY AND URBAN FABRIC STUDY  
DATE : 25-07-2018 and 26-07-2018

ORGANISED FOR : VI Semester students

FACULTY : Ar.Siddhartha and Ar.Senthil Kumar

OBJECTIVE: Site Visit and Case Study for Architectural Design Project of high rise tower

DESCRIPTION: A two day study on the Urban Fabric of MG road, were done by the students to analyse the user typology, traffic density and activity mapping for site justification an to frame the design requirement

OUR WAY ARCHITECTURE

IT'S  
EVENTS ALL  
THE WAY DOWN



ADITYA ACADEMY OF ARCHITECTURE & DESIGN , BANGALORE



# RENDERING WORKSHOP

## IT'S ALL OUR WAY TO MAKE OUT ARCHITECTURE

WORKSHOP ON ARCHITECTURAL RENDERING AND PRESENTATION TECHNIQUES.

DATE : 25TH August 2018

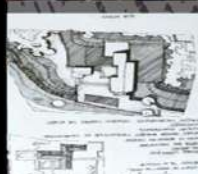
ORGANISED FOR : III sem and IV sem.

WORKSHOP BY : Ar. Saurabh Kishore Ohja and Artist Sharmilla

OBJECTIVE : Concept Development, Quick rendering and watercolour techniques

DESCRIPTION : A hands on workshop on Concept Development, Framing of views, Quick Rendering techniques and Design Presentation techniques.

OUR WAY ARCHITECTURE



ADITYA ACADEMY OF ARCHITECTURE & DESIGN , BANGALORE





# INNOVATIVE TEACHING METHODOLOGY

## PRE-PHASE:

Teaching is an ART and the art of TEACHING is a challenge. Professional practice is a subject which complements the academic process that a student of Architecture has experienced in the first 6 semesters over the Practical training which they will be undertaking in their 9th semester. The subject is appropriately placed in the 7th and 8th semesters like a sandwich in a grill and grilled.

Having taken the subject for two years, my approach to teaching a specific module on "TYPES OF ARCHITECTURAL FIRMS" changed and I have experimented the following method which has given a very good response from students, not immediately but at the eve of their Practical training when they started hunting for firms.

## METHODOLOGY:

Considering that one module requires about two sessions of three hours, ie six hours in total, the module was exposed as follows:

### SESSION – 01:

Students were formed in groups of 3 or 4 to form 10 groups. Each group was given a situation portraying them as a particular type of practitioner...one group as a partnership firm with related real-time situational experience. (Two groups were given the same situation to footprint session – 02). The group members Role Played among themselves and filled in the missing data on how they overview the situation. A session of two hours of jizzling discussion and facial expressions and body languages made it an interested session.

Their FILL IN THE BLANKS were reviewed by us to prepare them for the second session. The idea is that in the 1st session we had sown the seed of thought on a particular type of practice. This was also enhanced by way of poster making and analyzing live situations of practicing firms..an indirect case study and an opportunity for them to know firms for their Practical training.







#### SESSION – 02:

The two groups of similar situation were called and one was given to speak FOR and another AGAINST. So we had a total of 5 pairs speaking for and against, each on one type of practice (Proprietorship, Partnership, MNC, Limited Co. and Freelancer).

The debate session was organized for about 3+ hours in the presence of judges who finally became arbitrators as each group started exchanging fired arguments and justifications. Ultimately the debate conveyed all the advantages and disadvantages, pros and cons of various types of practice which otherwise would have been another lecture class with tabular columns.

To break the session we had a video played on a building which collapsed due to various reasons and a set of students had to ROLE PLAY the characters obviously involving the media interrogating the client, architect, structural consultant etc. That was fun learning.

#### OUTCOME:

The method was tried twice and has been video documented. Students have actually come up expressions like:

"Oh, I did not know where to go but now I know that I can't work under two heads".

This clarity on subject is a positive outcome.

I thank the judges Ar.Arunachal Hombali and Ar.Anupadma for their mentoring.

Methodology designed by Dr (Ar) K N Ganesh Babu,  
experimented first in 2016 at RIT and 2018 in AAAD.  
Project assisted by Ar.Sana Khan, Assistant Prof., AAAD.

# FRESHER'S DAY 2018

Fresher's day 2018 was organized for the 1st year students hosted by the 2nd year students. This night had fun-filled games along with the fresher's showcasing their amazing talents.



# ORIENTATION DAY 2018

The first years had their orientation day with Ar. Sathya Prakash Varanasi enlightening our students and giving them thoughtful insights towards their journey Architectural Journey and mainly provoked our students in critical thinking process.







PARAMITA JANA  
EDITORIAL HEAD



KEERTHANA G.P.  
CONTENT CURATOR



NIHARIKA SHETTY  
EDITOR



POOJA PAWAR  
EDITOR

## LITERARY CO-ORDINATORS



AR, NEHA SAHAY



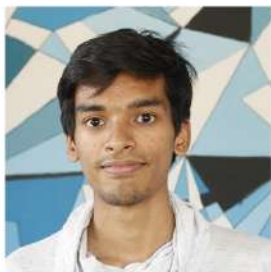
AR.K.SIDDHARTHA



AR. SANA KHAN



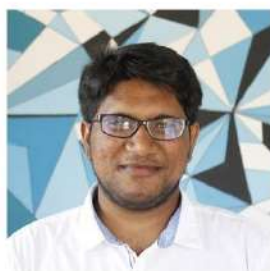
SAI YESHWANTH



IFHAM N.  
TECHNICAL HEAD



THEJESH P.



MD.AHMED



AYESHA Z.



ARSHIA M.



RIFQUTH S.B.



NUHA FATHIMA

TECHNICAL  
TEAM

CO- EDITORS

FRESCO TEAM



**ADITYA ACADEMY OF ARCHITECTURE AND DESIGN**

**EXHIBITION  
ACTIVITIES  
WORK SHOPS  
ON SPOT COMPETITIONS**

**11<sup>TH</sup>  
12<sup>TH</sup>  
13<sup>TH</sup>**

**APRIL 2019**

**ತೃಗ್ಗುಡ  
3.0**

**NEVER BE THE SAME**

**CULTURAL NIGHT  
EDM NIGHT  
FASHION SHOW  
SPORTS**



**VENUE:**  
ADITYA GROUP OF INSTITUTIONS,  
YELAHANKA,  
BANGALORE-64

**FOR ENQUIRES**  
8553041522-CHAVAN BALLAL  
9900210635-MEGHANA G Y  
9886028230-POOJA PAWAR



**Aditya Academy Of Architecture  
And Design**  
[aditya.institution](https://www.aditya.institution)

