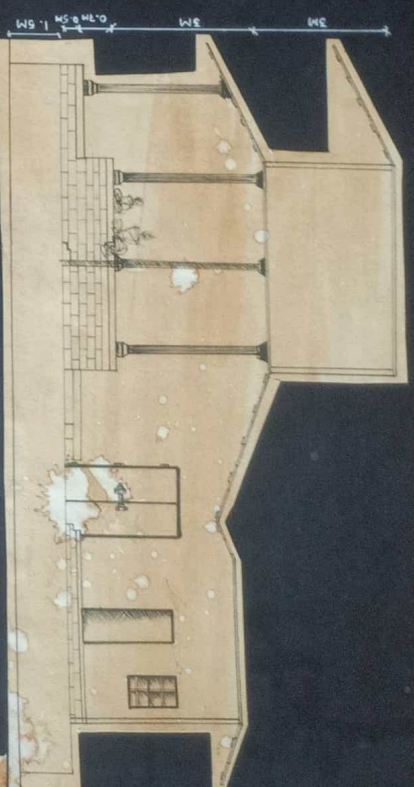
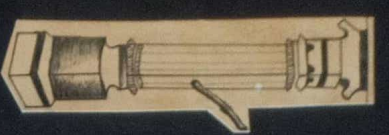


Y E R K O



ELEVATION

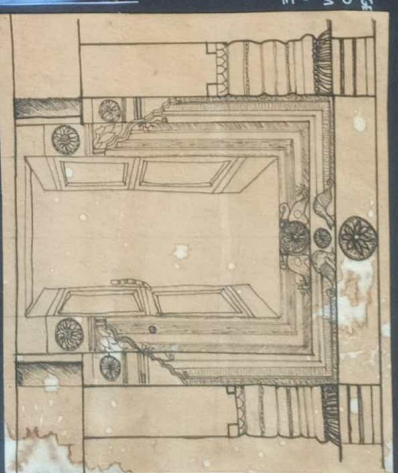
COLUMN DETAIL



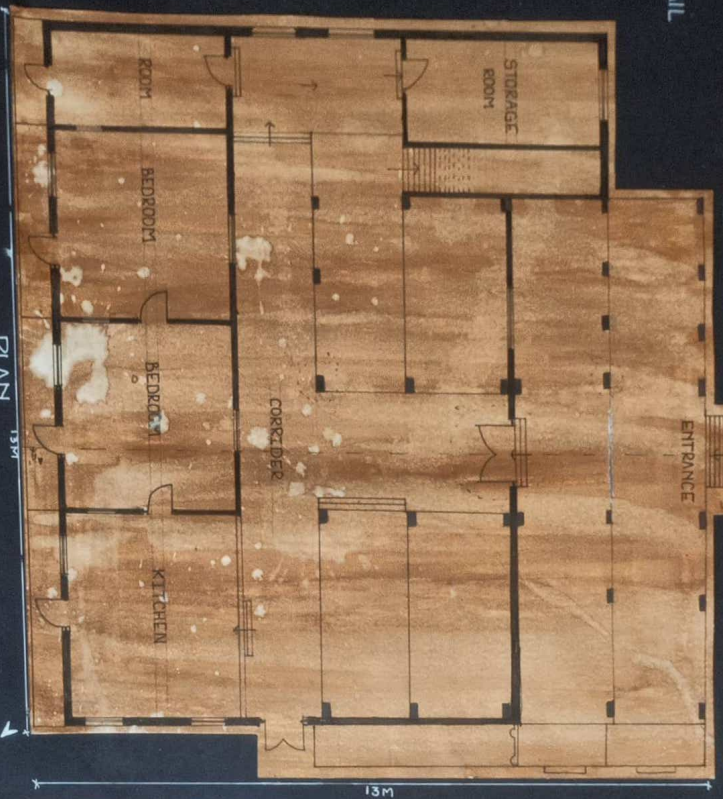
SECTION - A-A'
SCALE: 1:50



DOOR DETAIL



COLUMN DETAIL



PLAN

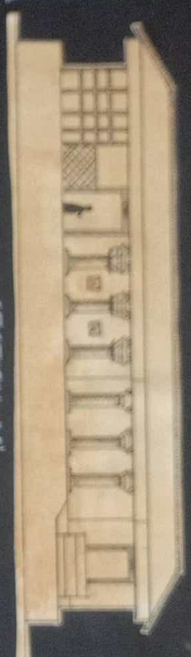
SCALE: 1:50



KEY PLAN

ಹಸ್ತಶಿಲ್ಪವಿರೂಪರಿಕ ಗ್ರಾಮ
HASTA SHILPA HERITAGE VILLAGE

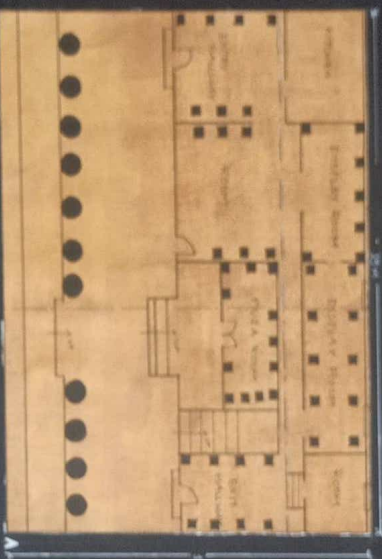




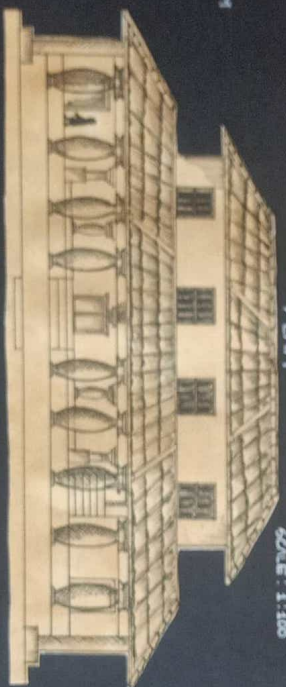
SECTION - N' SCALE 1:100



SECTION - E' SCALE 1:100



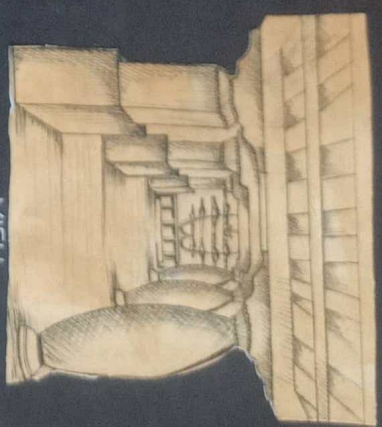
PLAN SCALE 1:100



ELEVATION



COLUMN DETAIL



VIEW

THE PLAN OF MARUTHU GUNNINGAM IS A SIMPLE RECTANGULAR PLAN WITH BROADER ROOMS ON SITE AND A PILLAR VERANDAH AT THE ENTRANCE THE UNIQUE FEATURE IS THAT THE COLUMNS OF THE FRONT VERANDAH ARE MODELLED TO RESEMBLE THE MANDALAM OR THE BRADARANGA A PERCUSSION INSTRUMENT ASSOCIATED WITH THE FOLK ART FORM. IN THIS HOUSE IT HAD 6 TO 12 PILLARS. VARIOUS AGRICULTURAL EQUIPMENTS AND TOOLS SUCH AS WOODEN PLOUGH, BROOMS, SICKLES, MORTARS, PESTLES, GRINDING STONES, WHEELS, ETC. ARE DISPLAYED IN THE ENTRANCE CORRIDOR. MANGROVE PRINTINGS, DASHNATHAN, KALGHAT PRINTINGS, GLASS PRINTINGS AND NICHROME PRINTINGS ARE DISPLAYED IN DISPLAY ROOM.



KEY PLAN

COLUMN DETAILS

COLUMN DETAILS

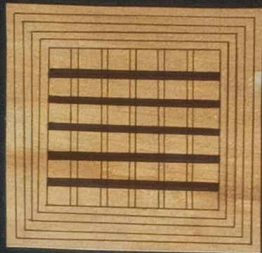
ಹಸ್ತ ಶಿಲ್ಪ ವಿರೂಪತಿಗ ಕ ಗ್ರಾಮ

HASTA SHILPA HERITAGE VILLAGE

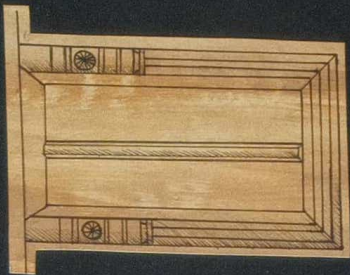




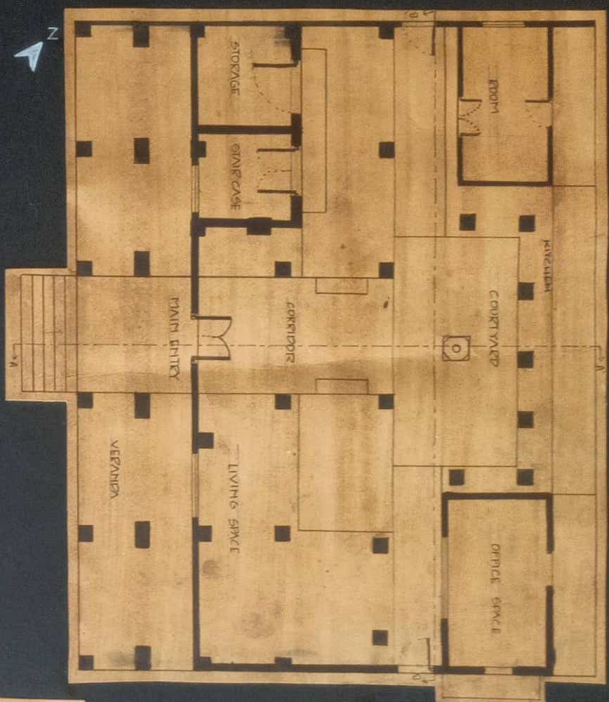
WINDOW DETAIL



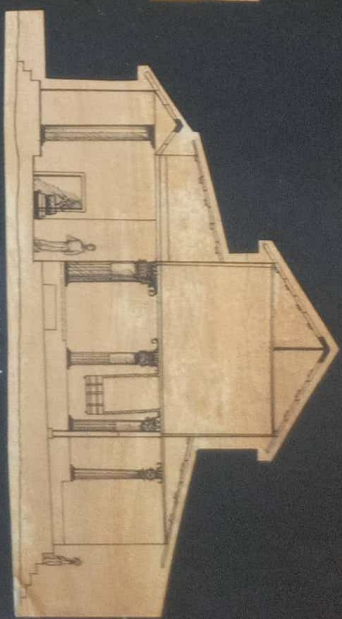
GRILL WORK



DOOR DETAIL

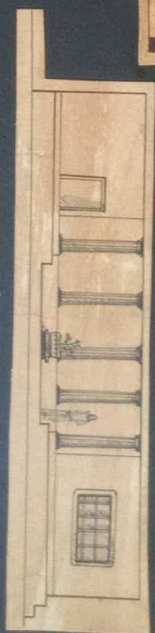


PLAN (Scale 1:100)



SECTION A-A' (Scale 1:100)

NELVADI, A SMALL VILLAGE IN ERYNDOOR REGION OF KUNDAPUR TALUK, UDUPI DISTRICT OF KARNATAKA STATE.
ERYNDOOR-NELVADI HOUSE IS A COMBINATION OF THE HERINGILLU CLAYMUD AND A SERIES OF FUNCTIONAL AREAS POSITIONED AROUND A COMPACT OPEN-TO-SKY COURT.



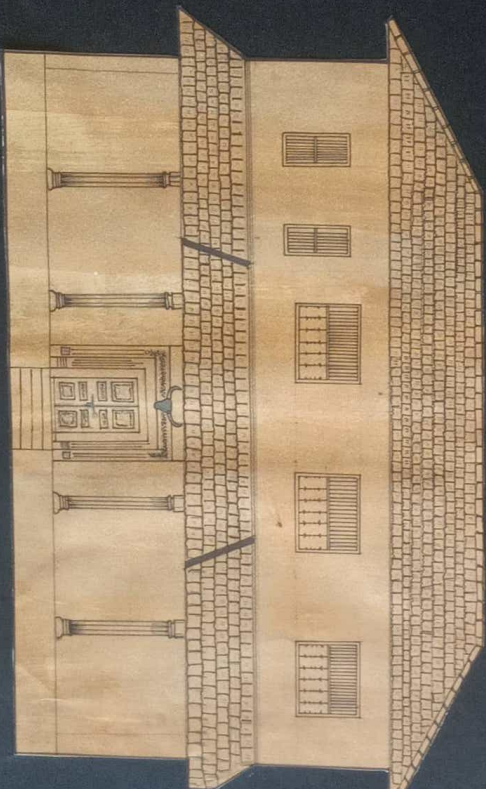
SECTION B-B' (Scale 1:100)



THIS HOUSE COMPRISED OF MANY LEVELS, EACH AND EVERY LEVEL HAD MANY FUNCTION.



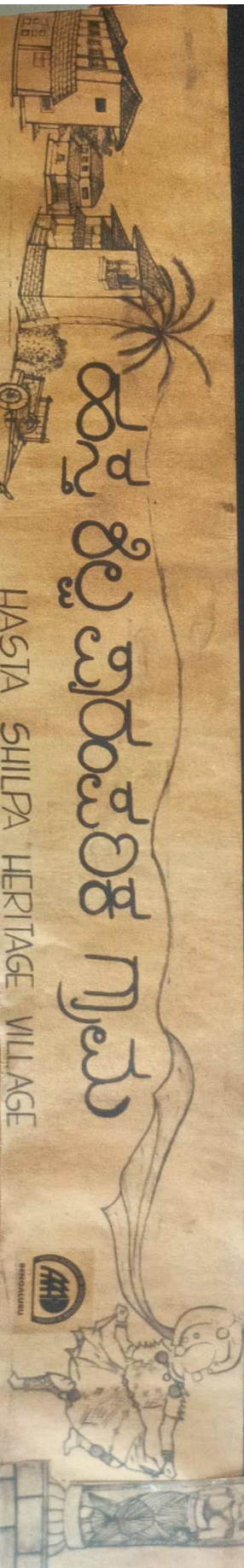
KEY PLAN

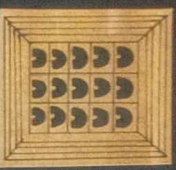


FRONT ELEVATION

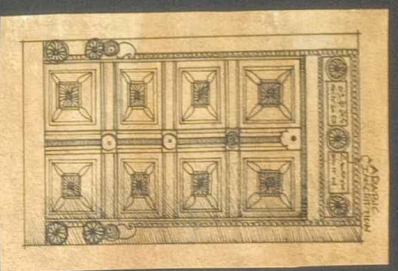
ERYNDOOR-NELVADI HOUSE

000 000 000

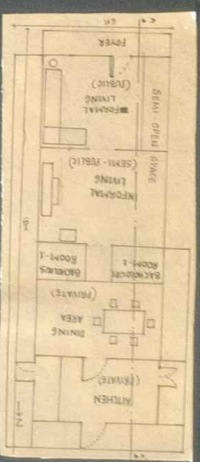




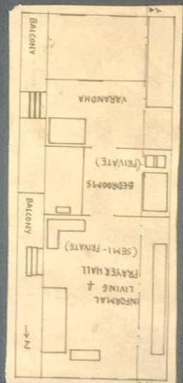
NICHES FOR KEEPING DYAS
(JWALA ARCHITECTURE)
SCALE: 1:120



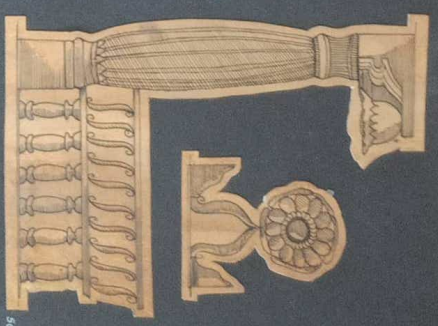
SCALE: 1:120



GROUND FLOOR
SCALE: 1:1000

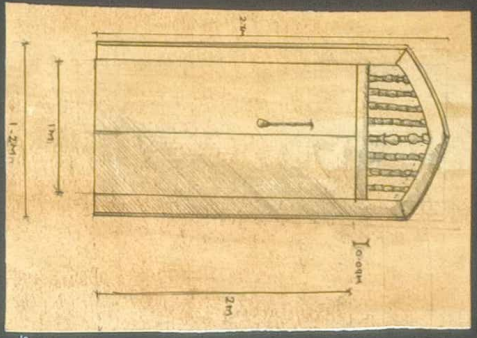


FIRST FLOOR
SCALE: 1:1000



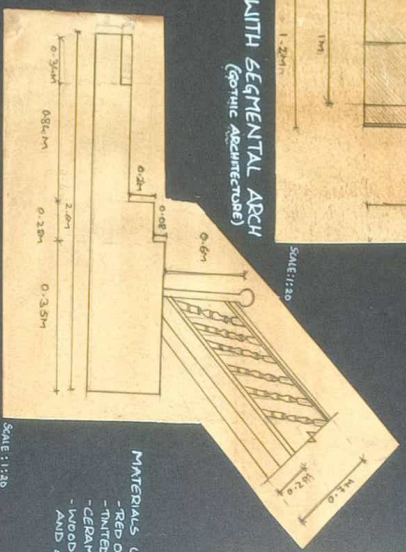
SCALE: 1:240

COLUMN WITH SEATING



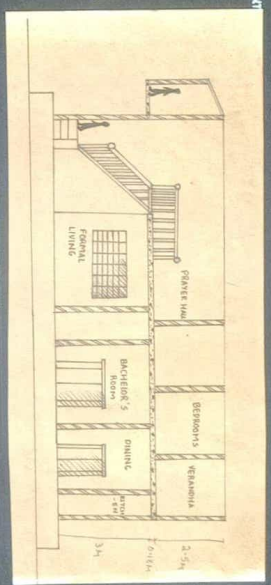
SCALE: 1:20

DOOR WITH SEGMENTAL ARCH
(GOTHIC ARCHITECTURE)



SCALE: 1:20

STAIRCASE DETAIL



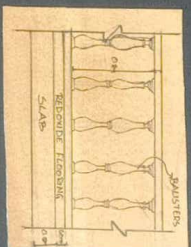
SCALE: 1:1000

SECTION

- MATERIALS USED:-
- RED OXIDE FOR FLOORING
 - TILED GLASS
 - CERAMIC TENSILS
 - WOOD FOR DOORS, WINDOW AND STAIRS.

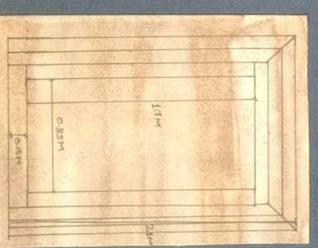


NORTH ELEVATION



SCALE: 1:120

DETAIL AT MEZANINE FLOOR



SCALE: 1:120

MAIN DOOR



KEY PLAN



NICHE TOWARDS WEST
(USED FOR PRAYER)

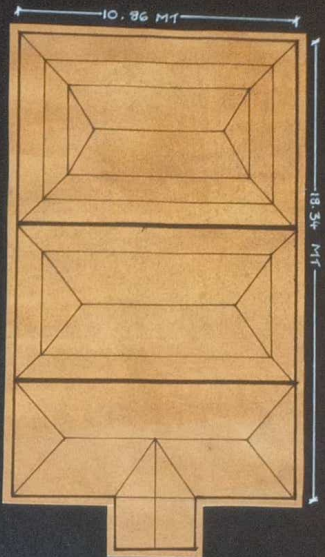


PRAYER HALL

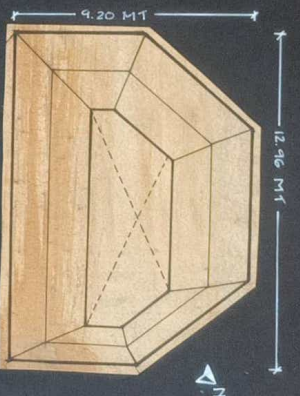




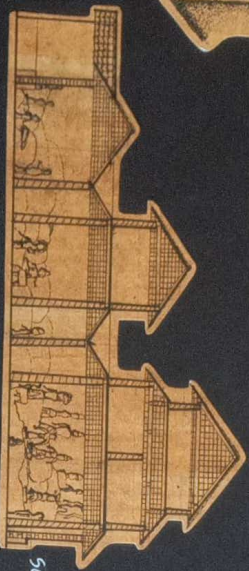
PILLAR
DETAIL



PLAN
SCALE - 1:100



GARADI MANE
SCALE - 1:100



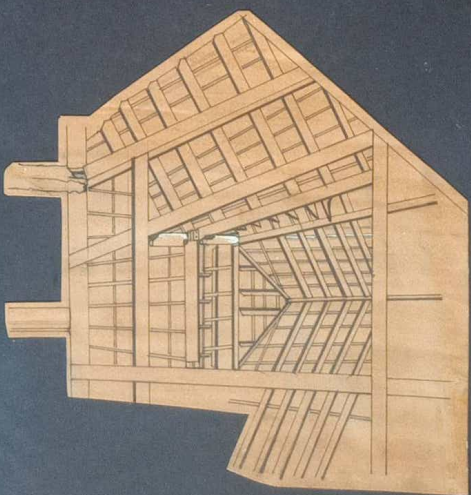
SECTION

SCULPTURES



THE ENTIRE COMPLEX WHERE THE TWO BUILDINGS OF THIS MUSEUM ARE LOCATED AT DIFFERENT LEVELS. WITH NARROW SHEET'S FORMING INTO A COURTYARD WITH A LARGE FREE SHELTERING ANVAGANA AND A VERTICAL SMALL SHRINE OF KSBETRAPALA CREATING THE RIGHT AMBIENCE OF FOLK-RICH TULJANADI OF A BYGONE ERA.

THIS SHRINE HAS BEEN CREATED BY A ROOFING A NATURAL OUTCROP OF ROCK THAT EXISTED WITHIN THE SITE.

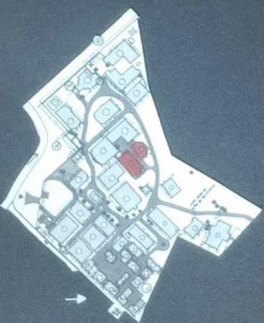


ROOF DETAIL



PILLAR
DETAIL

THE MUSEUM OF FOLK ARTS OF HASTA SHILPA IS CONSIDERED AS ONE OF THE LARGEST AND MOST UNIQUE MUSEUM OF ITS KIND IN INDIA IN RESPECT OF VOLUME OF SPACE, NUMBER AND VARIETY OF OBJECT, PURE CHARACTER OF ITS EXHIBITS AND THEIR IMAGINATIVE DISPLAY.



KEY PLAN

ಹಸ್ತ ಶಿಲ್ಪ ಪರಂಪರಿಕೆ ಗ್ರಾಮ

HASTA SHILPA HERITAGE VILLAGE

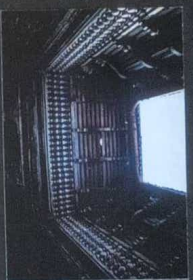


KARNATAKA

ಇತಿಹಾಸ-ಸ್ಮಾರಕ



WINDOW DETAIL

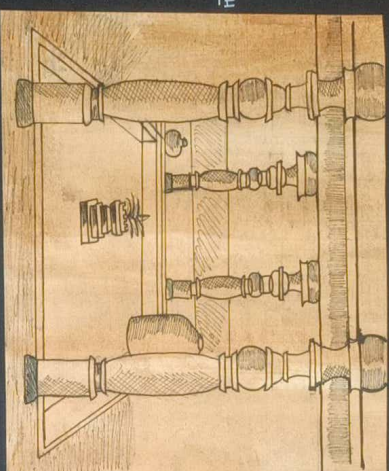


CHOWKI VIEW

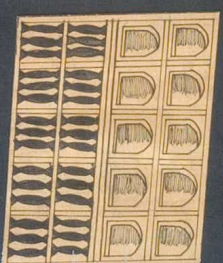


CHOWKI DETAIL

THE CORRIDOR AROUND THE COURTYARD PROVIDES ACCESS TO THE VARIOUS LIVING THROUGH DOOR OPENINGS. AN INTERESTINGLY CARVED WOODEN CEILING RUNNING THROUGH THE ENTIRE WIDTH OF THE LOWER LINDOM ADDS FURTHER BEAUTY. THERE IS STAIR EFFECT AND LOW LINDOM LEVEL



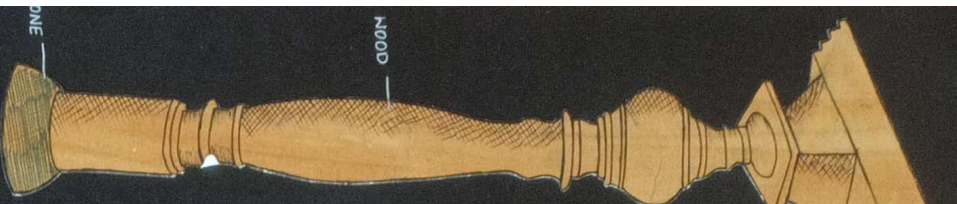
COURTYARD



JALI DETAIL



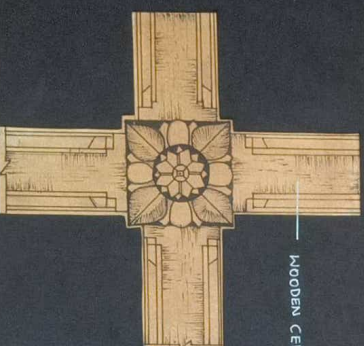
PILLAR VIEW



COLUMN DETAIL



DOOR VIEW



WOODEN CEILING



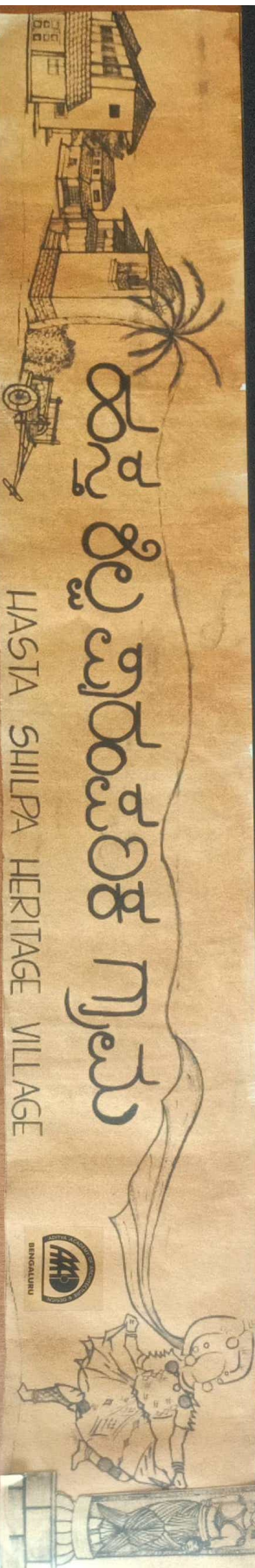
ORNAMENTATION

CEILING DETAIL

CEILING DETAIL



KEY PLAN



ಹಸ್ತ ಶಿಲ್ಪ ಪರಂಪರಾ ಗ್ರಾಮ

HASTA SHILPA HERITAGE VILLAGE



BENGALURU

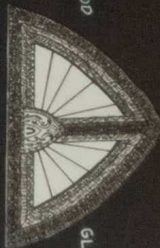


TEAK WOOD

DOOR DETAIL



CAST IRON 1:1000



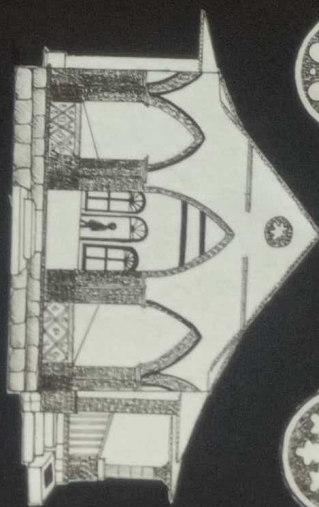
GLASS



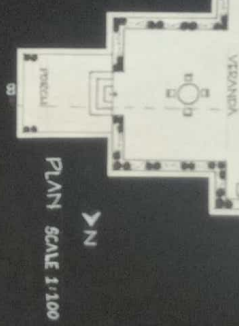
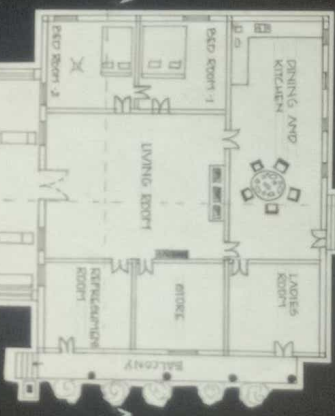
VENTILATION DETAIL



TERROCOCTA



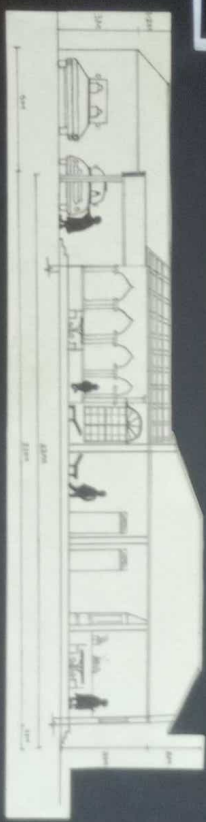
EAST ELEVATION



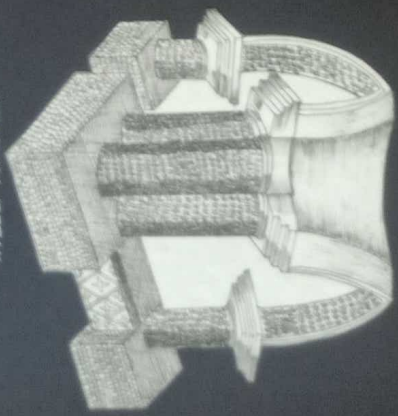
PLAN SCALE 1:100



SECTION A-A SCALE 1:100



SECTION B-B SCALE 1:100



ISOMETRIC VIEW



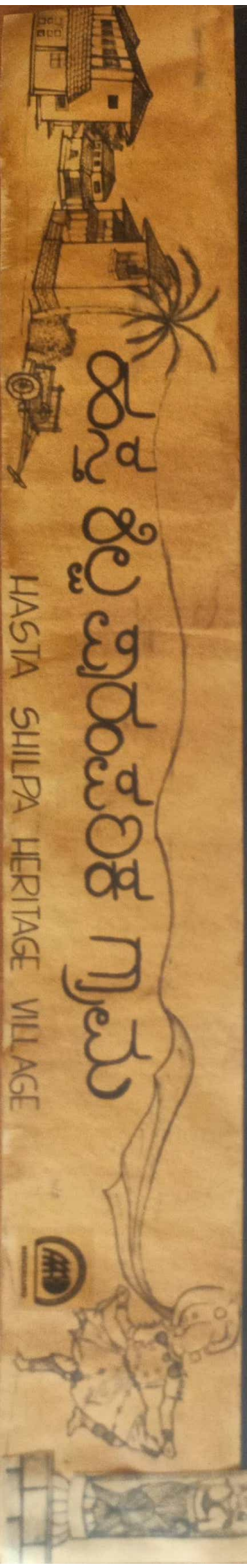
ELEVATION SCALE 1:100



KEY PLAN

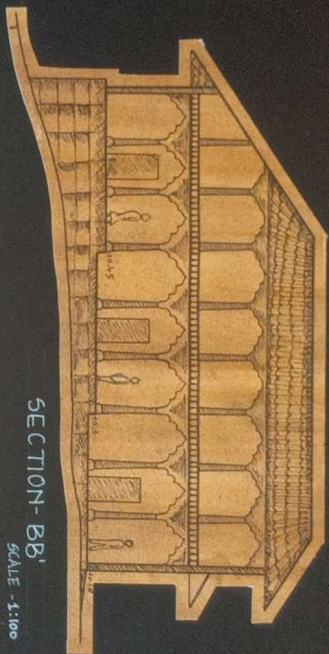
COLUMN DETAIL

MANGALORE CHRISTIAN HOUSE IS A 195 YEARS OLD BUILDING INFLUENCED BY GOTHIC AND VERNACULAR ARCHITECTURE STYLE. EARLIER THE BUILDING WAS OWNED BY LUNDA THE COFFEE PLANTATION OWNER. LATER THE HOUSE WAS CONVERTED INTO MUSEUM WITH A CONFERENCE ROOM ADDED TO THE HOUSE. THE CONDITION OF THE BUILDING IS GOOD AND WELL MAINTAINED BY HASIA SHILPA HERITAGE VILLAGE.





SECTION - M'



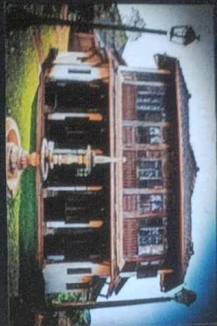
SECTION - BB'

SCALE - 1:100

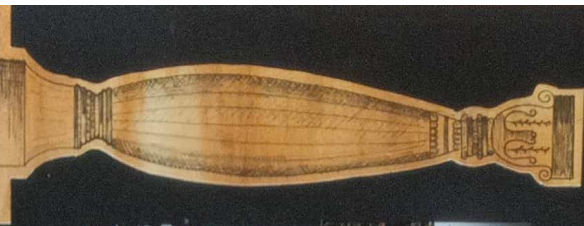


WINDOW DETAIL

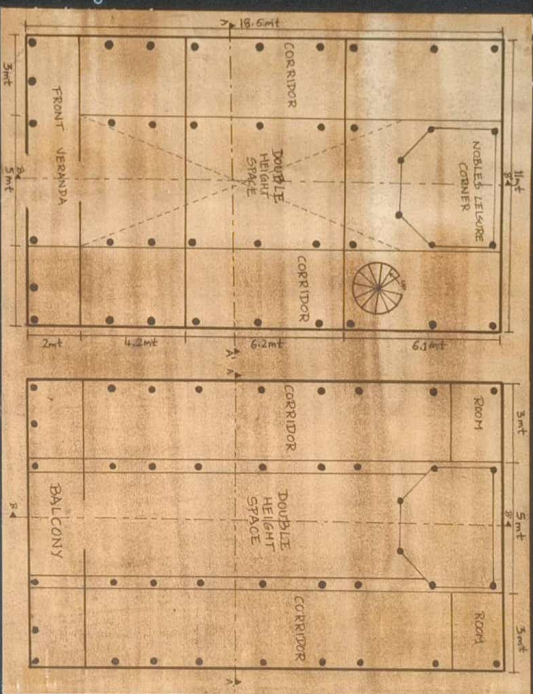
WATER FOUNTAIN



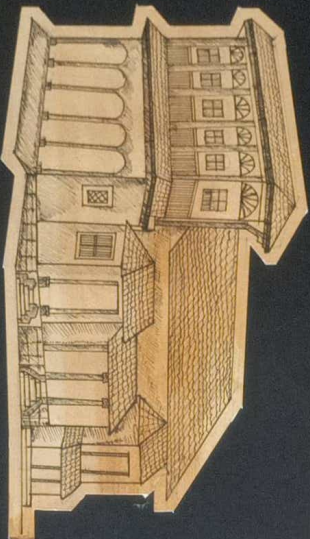
INTERIOR CONSIST OF LARGE HALL OF CONSIDERABLE DEPTH IN 3 LEVELS. WOODEN PILLARS COATED WITH POLYURETHANE VARNISH. WOODEN ARCHED COLONNADE. QUARRY TILES FOR FLOORING. DOUBLE HEIGHT SPACE AT CENTRE HAS A SEMI-CIRCULAR GLASS ROOFING. WALLS CONSTRUCTED WITH MANGLORE BRICKS PLASTERED WITH CEMENT.



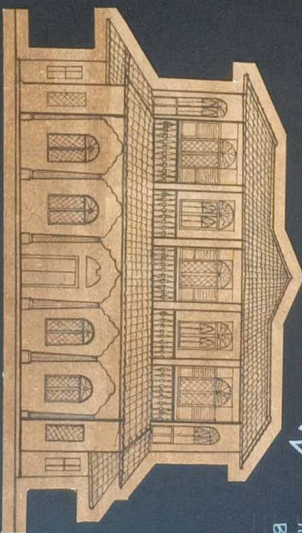
COLUMN DETAIL



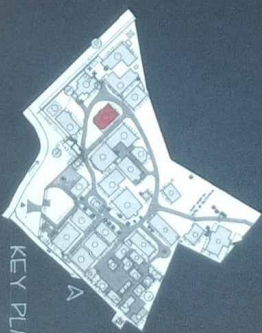
THE STRUCTURE OF DECCANI NAWAB MAHAL, AS IT STOOD IN ITS ORIGINAL LOCATION, WAS MORE IN DEPTH COMPARED TO ITS WIDTH. A TRADITIONAL COURTYARD DISAPPEARED FROM THE DESIGN AND ALL THAT REMAINED WAS A NARROW WELL BRINGING IN AIR AND LIGHT. TRADITIONAL STRUCTURE BELONGING TO FAMILY OF NAWABS. TRADITIONAL COURTYARD DISAPPEARED FROM THE DESIGN AND ALL THAT REMAINED WAS NARROW WELL BRINGING AIR AND LIGHT.



3D - VIEW



ELEVATION

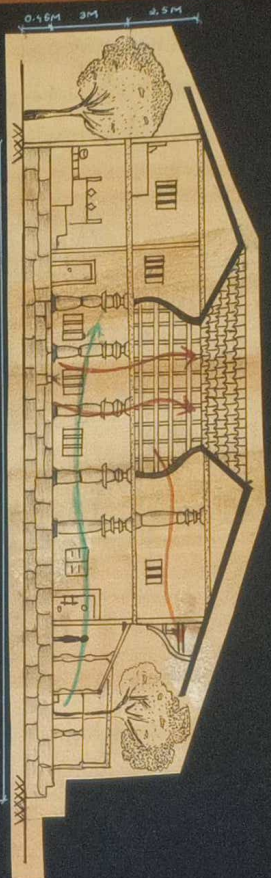


KEY PLAN

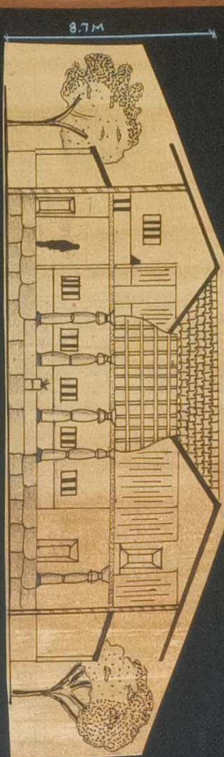
ಹಸ್ತ ಶಿಲ್ಪ ಪರಂಪರಿಕ ಗ್ರಾಮ

HASTA SHILPA HERITAGE VILLAGE





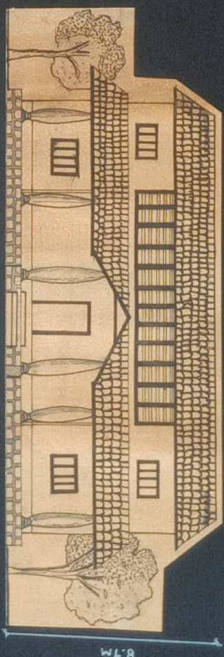
SECTION M-M
SCALE 1:100



SECTION B-B
SCALE 1:100



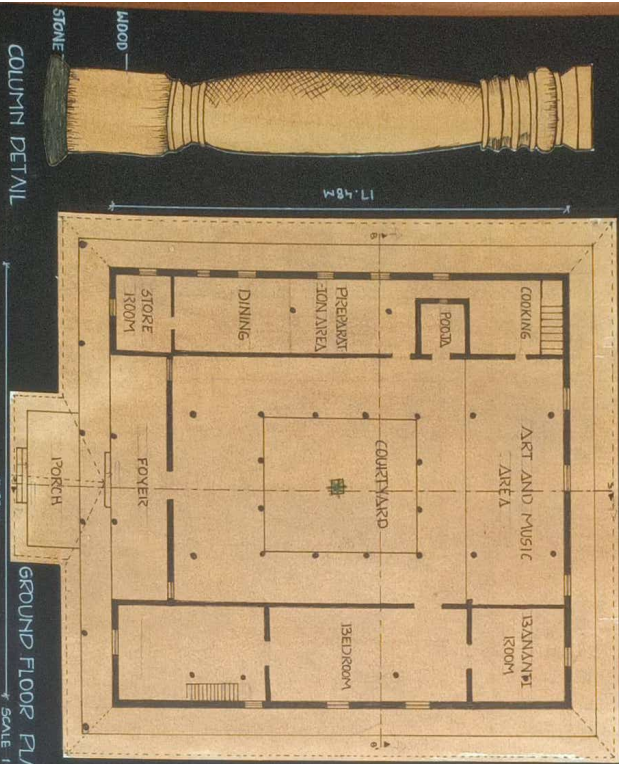
KUNTHIR CHOWKI MAHE



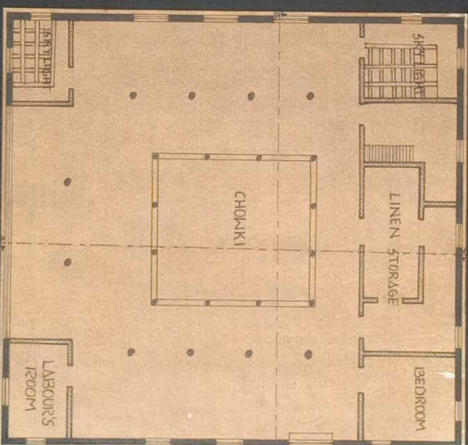
NORTH ELEVATION



COURTYARD VIEW



GROUND FLOOR PLAN
SCALE 1:100



FIRST FLOOR PLAN
SCALE 1:100

WAS BUILT IN THE ARCHITECTURAL STYLE OF KERALA BASED ON THE FIFTEENTH CENTURY. IT IS A TWO STOREY HOUSE WITH SHIPED ROOF. SLOPING DOWN INTO THE CENTRAL COURTYARD. THE BASIC HOUSE MODULE IS 'MALUKETTIL'. THE COURTYARD LINED WITH PRESSED GRANITE STONE EDGING. HAS CIRCULAR WOOD TURNED PILLARS. HAVING A GENTLE TAPER CHARACTERISED BY WOODEN JOINTARY.



KEY PLAN

KUNTHIR CHOWKI MAHE

ಹಸ್ತ ಶಿಲ್ಪಿವರೂಪರಿಗೆ ಗ್ರಾಮ

HASTIA SHILPA HERITAGE VILLAGE



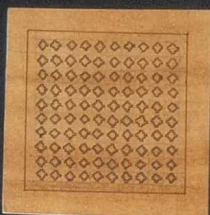


NORTHERN ELEVATION

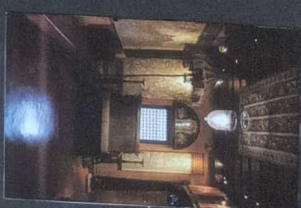
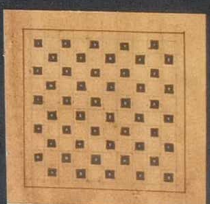
- KAVAL MAHAL IS AN ASSEMBLY OF CARVINGS FROM VIJAYANAGARA EMPIRE.
- AFTER THALIKOTA WAR THE ENTIRE EMPIRE WAS DESTROYED.
- THE ONLY LEFT OUT BURNED CARVINGS ARE ASSEMBLED IN THIS STRUCTURE.



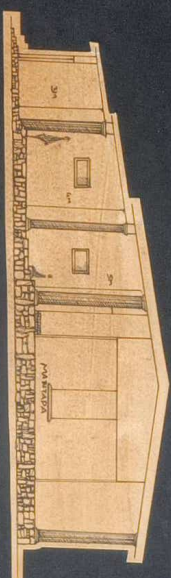
JAIL INSIDE MANTARA



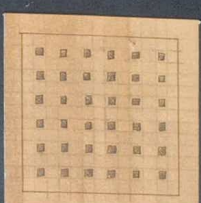
JAIL ON SOUTHERN WALL



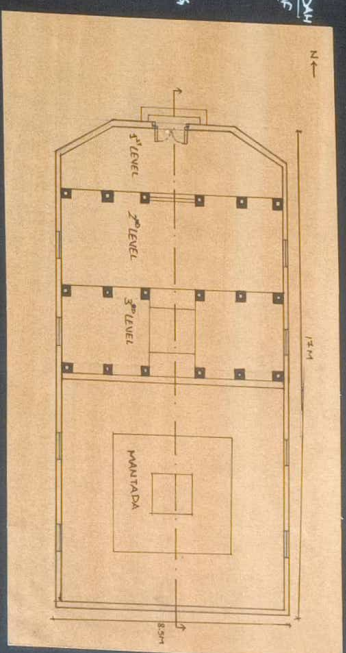
PAINTINGS DEPICTING STORIES



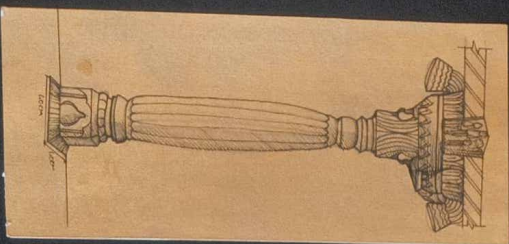
JAILS ON WESTERN WALL



SECTION
SCALE 1:100

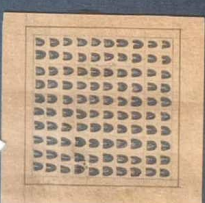


PLAN
SCALE 1:100



COLUMN DETAIL

- THIS HOUSE IS SQUARE SHAPED WITH AN ATTACHED FRONT VERANDAH HAS A STEEP HIPPED ROOF WITH EAVES PROTECTING TO COVER THE WALLS AND THE VERANDAH, SHADING THEM FROM THE SUN AND DEFLECTING THE DOWN POUR OF RAIN AWAY FROM THE BUILDING.
- A STONE BASE IS USED FOR THE COLUMN TO PREVENT ROTTING OF WOOD.

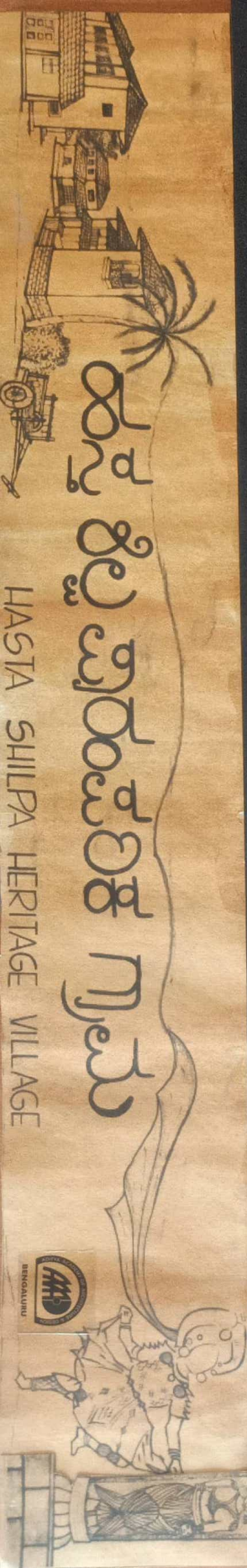


NICHES IN WALL ON EASTERN SIDE



KEY PLAN

L M A H L

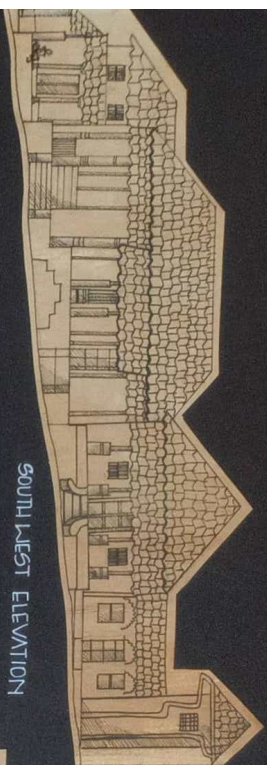


ಹಸ್ತಿ ಶಿಲ್ಪ ಪರಂಪರಿಕೆ ಗ್ರಾಮ

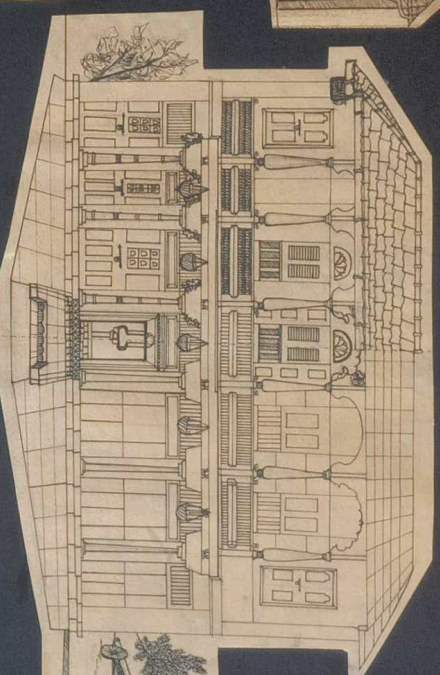
HASTIA SHILPA HERITAGE VILLAGE



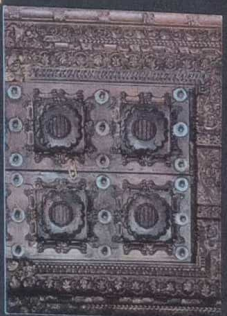
BANGALURU



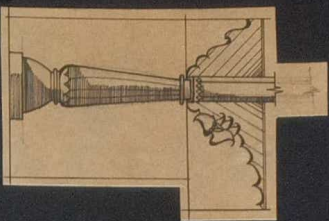
SOUTH WEST ELEVATION



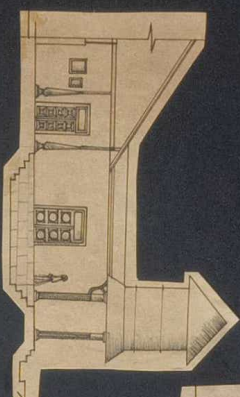
FRONT ELEVATION



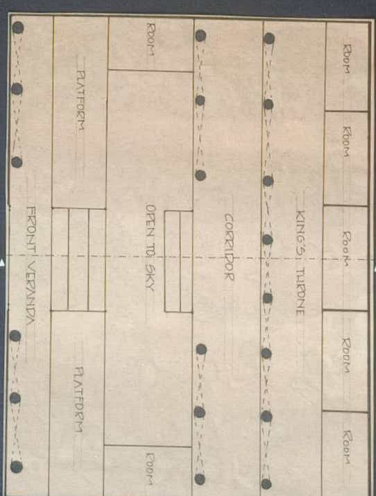
THE DOORS LEADING OUT OF THE DURBAR HALL ARE WOOD-FRAMED, CLOSED BY SOLID WOODEN SHUTTERS AND HAVE A PANEL CARVED WITH DECORATIVE MOTIFS.



COLUMN DETAIL



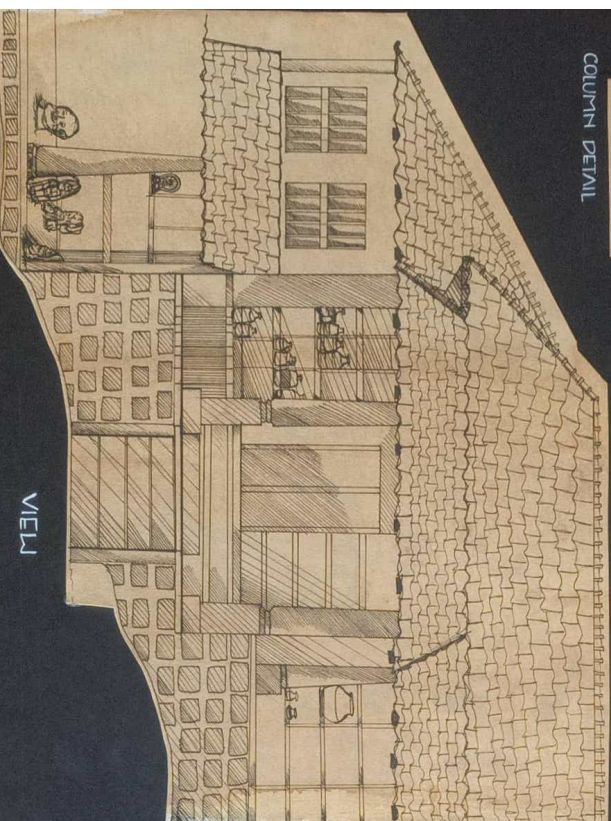
SECTION (1:100)



PLAN (1:100)



KEY PLAN



VIEW

A 19th Century Durbar Hall, built by the Maratha Ruling, GAN BYADRONDES IN BASALKOT. IT IS INFLUENCED BY RAJASTHANI ARCHITECTURE AND CRAFTED LOCALLY WITH TEAK WOOD. THE DECORATION REACHES ITS HEIGHT IN A DAZZLING DISPLAY OF CARPENTERS, PAINTING, JEWELLERY, TROPHIES, WEAPONS AND OTHER ROYAL PARAPHERNALIA GRACING THE HALL.

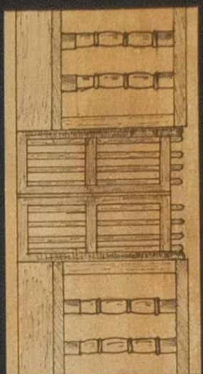
ಹಸ್ತ ಶಿಲ್ಪಿವರೂಪರಿಕ ಗ್ರಾಮ

HASTA SHILPA HERITAGE VILLAGE



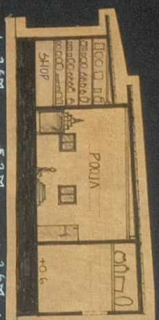
P A L A C E

MODHU



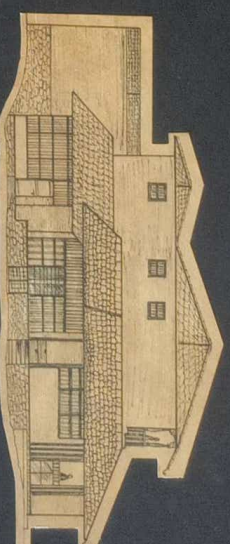
RAILING DETAIL

THIS HOUSE IS CONSIDERED AS THE COOLEST HOUSE BECAUSE OF ITS DESIGN. IT WAS LOCATED IN RATNA VERDI IN SRINGERI EAST ENTRANCE, AND THERE ARE SHOP LOCATED ON THE SOUTH WEST CORNER.



SECTION - AA

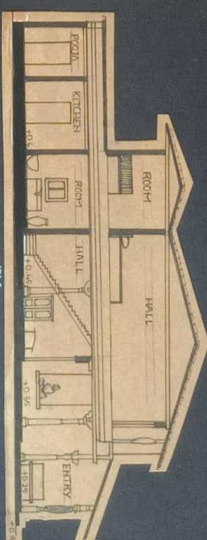
SCALE - 1:100



SOUTH ELEVATION

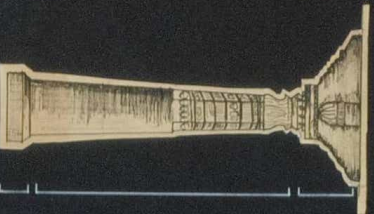
SCALE - 1:100

ENTRANCE IS A SEMI OPEN SPACE, WHICH IS A FORMAL SPACE GIVES FURTHER ENTRY TO MULTIPURPOSE HALL WHICH CONSISTS OF MUSICAL, READING AND RESTING SPACE. FROM DINING IS THE ENTRY TO KITCHEN AND POOL.

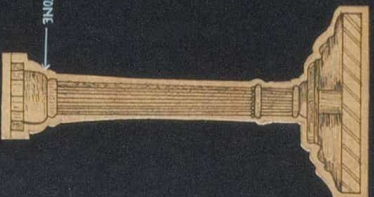


SECTION - BB'

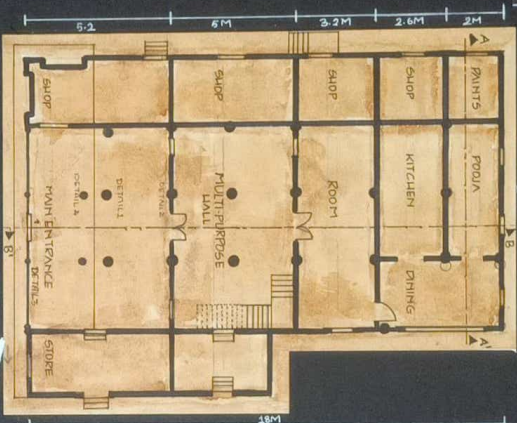
SCALE - 1:100



COLUMN DETAIL-1



COLUMN DETAIL-2



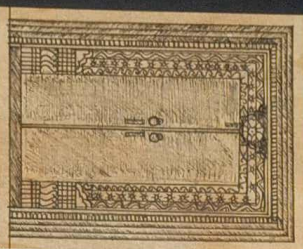
PLAN

SCALE - 1:100

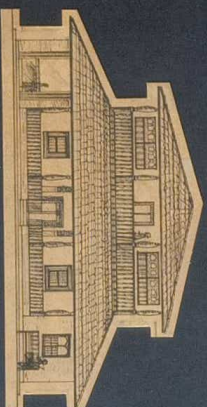
SRINGERI HOUSE HAS A RECTANGULAR PLAN IN THE GROUND FLOOR. SQUARE PLAN IN THE FIRST FLOOR. THIS HOUSE CONSISTS OF PRIVATE, SEMI-PRIVATE AND PUBLIC SPACES.



COLUMN DETAIL-3

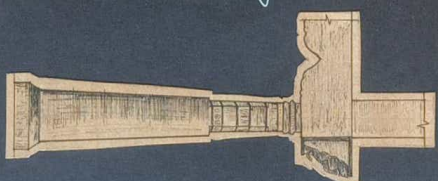


FRONT DOOR ORNAMENTATION



FRONT ELEVATION

SCALE - 1:100



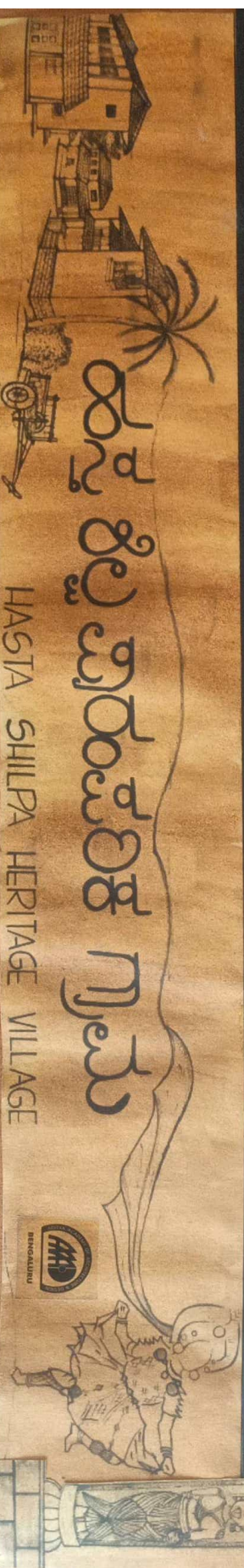
COLUMN DETAIL-4.

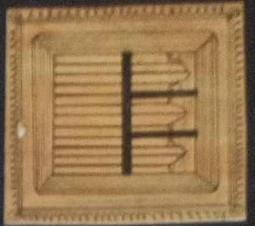


KEY PLAN



S R - N G L E R - H O U S E



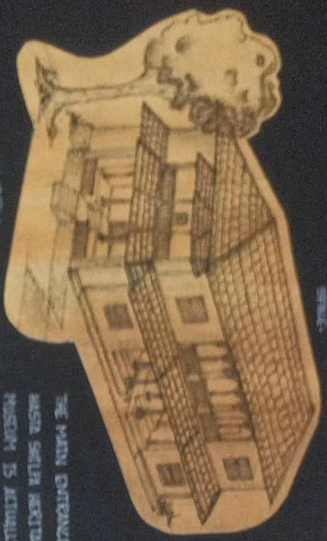


WINDOW DETAIL - I



WINDOW DETAIL - II

ALL WINDOWS, WITH MINOR
VARIATIONS, ARE INTERESTING IN ALL
WAYS. THEY ARE BY DESIGN
CONSIDERED EFFECT FOR THE INTER-
IOR.



VIEW

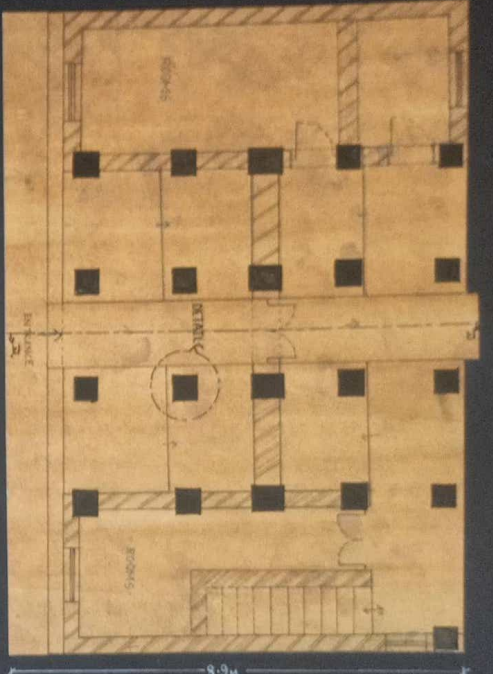
THE MAIN ENTRANCE OF THE
HASTA SHILPA HERITAGE VILLAGE
MUSEUM IS ACTUALLY A
RECONSTRUCTED ONE, ORIGINALLY
BUILT IN 1955.



THESE ARE EXTRA LONGER PILLARS
SURROUNDING A WHITE-LEVEL
SIT OUT THAT VISIBLE UP AS A
SMALL OFFICE SPACE CURRENTLY.

THESE ARE USED FOR THE
TRADITIONAL IS PLACED IN
FRONT OF THE
HASTA SHILPA HERITAGE VILLAGE
MUSEUM FOR THE BLACK PILLARS

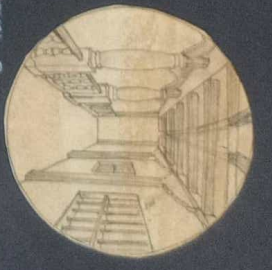
COLUMN CAPITAL DETAIL



PLAN
SCALE: 1:50

SUGAR CANE WASTE, LEAF
EXTRACT AND TWIGGERS
ARE USED FOR PLASTERING
THE WALL, WHICH
PROVIDES NATURAL
COLOUR FOR THE
WALL.

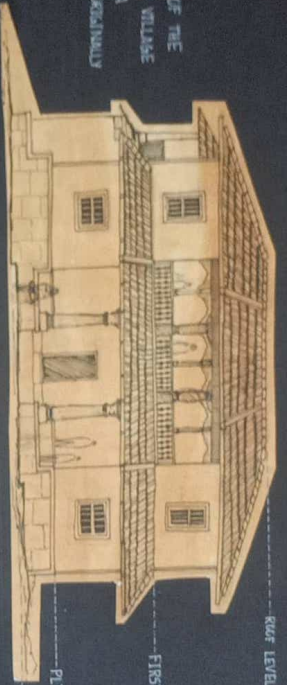
DETAIL - B



DETAIL - A



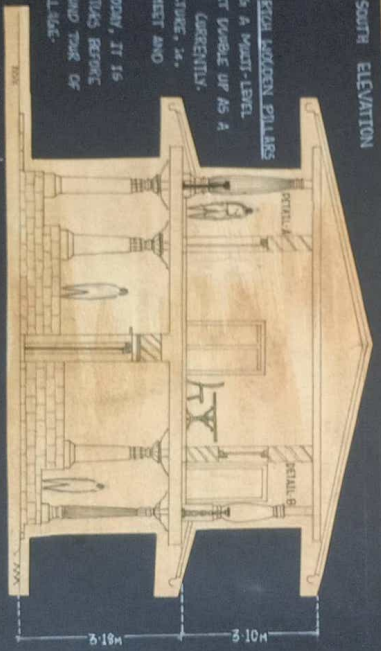
SOUTH ELEVATION



PLINTH LEVEL

FIRST FLOOR GL

ROOF LEVEL



SECTION AA
SCALE: 1:50

SIT CUT VIEW



KEY PLAN

ALL DIMENSIONS ARE IN METERS.

R H O D E S E

M I A

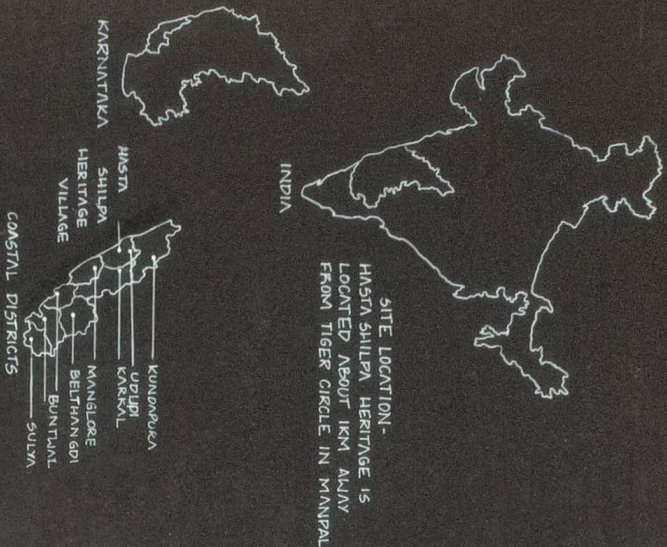
ಹಸ್ತ ಶಿಲ್ಪ ವಿರೂಪತಿಗ ಕ ಗ್ರಾಮ

HASTA SHILPA HERITAGE VILLAGE



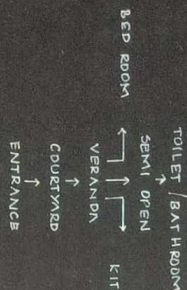
BRIGALU

LOCATION



DESIGN ELEMENTS

- DIFFERENT PARTS OF COUNTRIES, PLACES HAVE DEVELOPED THEIR OWN ARCHITECTURAL STYLE ACCORDING TO LOCAL CONDITIONS.
- DIFFERENT SOLAR PASSIVE FEATURES ARE AVAILABLE IN MOST OF THESE HOUSES RELATED TO TEMPERATURE CONTROL AND IT PROVIDES NATURAL VENTILATION.
- THE ORIENTATION PLAYS AN IMPORTANT ROLE.
- MOST OF THESE HOUSES ARE FAVING ROUTE TO RECEIVE MAXIMUM SOLAR RADIATION



MATERIALS

- HOUSES ARE MADE OF LOCALLY AVAILABLE MATERIALS LIKE MUD, WOOD, BAMBOO, STONE RED OXIDE ETC.
- WALL - MUD, BRICKS - HAND MADE, OF DIFFERENT SIZES.
- ROOF - MANGLORE, MANGLORE TILES
- COLUMNS - WOOD - JACK TREE, WILD JACK TREE, AND WESTERN GHAT TREE
- PEDESTAL - STONE
- BASTER - BOGI TREE [RESISTS MOIST AND HEAT]
- CASHEW SHELL - TREATMENT OF COLUMNS
- [TOXIC FOR INSECTS, RAIN DOES NOT EFFECT]
- FLOORING - RED OXIDE [PERFECT FOR WARM AND TROPICAL PLACES, SUSTAINABLE, ECO-FRIENDLY]
- PLANT - HIGH PLANTS ARE PROVIDED - STONE, DOORS AND WINDOWS - WOOD, INTRICATELY CARVED.
- KITCHEN - MUD OVEN, STOVE, FACES EAST.



HISTORICAL IMPORTANCE

- THESE TYPES OF HOUSES TENDS TO EVOLVE OVER TIME TO REFLECT THE ENVIRONMENTAL, CULTURAL, TECHNOLOGY AND HISTORICAL CONTEXT IN WHICH IT EXIST.
- THESE HOUSES ARE SIMPLEST FORMS FOR ADDRESSING HUMAN NEEDS IN PAST AND PRESENT.
- ESTABLISHES A RELATIONSHIP BETWEEN PEOPLE, CLIMATE AND ARCHITECTURE.
- IT REFLECTS TIME, PLACE AND CULTURE.

DOCUMENTATION

- THE WHOLE COMPLEX CONSISTS OF 26 STRUCTURES, IN WHICH ONLY 12 STRUCTURES ARE ALLOWED TO DOCUMENT.
- FIRSTLY, WE CENTERED THE LOCATION - HASTIA SHILPA HERITAGE VILLAGE COMPLEX] OF 12 STRUCTURES IN THE MAP.
- GROUPS WERE MADE TO STUDY EACH STRUCTURE.
- WE THEN STARTED DOCUMENTING USING THE FOLLOWING TECHNIQUES -

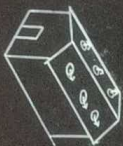
- MEASURE DRAWING
- VISUALS - PHOTOGRAPHS AND VIDEOS WERE DONE.
- ON SPOT SKETCHES - DOCUMENTATION DETAILS, JOINTS, DETAILS, PLANS, SECTIONS, ELEVATIONS, LEVELS, PLINTHS.

CONCLUSION

- THESE TYPE OF BUILDINGS ESTABLISH THE RELATIONSHIP BETWEEN CLIMATE, SOCIO-CULTURAL SETUP AND SUSTAINABILITY.
- CONSTRUCTED USING LOCALLY AVAILABLE MATERIALS
- IT PROVIDES DESIGNED COMFORT
- THEY ARE ENERGY EFFICIENT
- THEY WITHSTAND CLIMATE
- A GOOD NUMBER OF SOLAR PASSIVE FEATURE ARE AVAILABLE IN MOST OF HOUSES

CLIMATE

- SINCE CLIMATE VARIES FROM PLACE TO PLACE, FAVORABLE ARCHITECTURAL SOLUTIONS FOR BUILT ENVIRONMENT ARE ALSO REGION SPECIFIC.
- CLIMATE CONTROL IS OF PRIME IMPORTANCE FOR MAINTAINING COMFORTABLE CONDITIONS INSIDE BUILDINGS.
- THESE HOUSES ARE PLANNED AS OPEN, SEMI OPEN, CLOSED SPACES.
- COURTYARDS ARE PROVIDED FOR VENTILATION AND LIGHT - STACK EFFECT



DOCUMENTATION



ಹಸ್ತ ಶಿಲ್ಪ ಪರಂಪರಾ ಗ್ರಾಮ

HASTIA SHILPA HERITAGE VILLAGE





2. SPRINGERI HOUSE



1. MIYAR HOUSE



7. HUNTER CHOMI-MANE



8. BHATHAL NANYATHI



9. SHIRNE



10. BANYNDOR - NELYAPI HOUSE



3. MUDHOL PALACE DURBAR HALL



11. YERUKONE HOUSE



4. KATHAL MAHAL



13. HARKUR OLAKHMANINE



5. IMGAALORE CHRISTIAN HOUSE



6. DECCANI MAHAB MAHAL



SITE PLAN

SITE AREA : 2754.41 Sq.m

SCALE - 1:500

LEGENDS -

1. Hargobli Bandstole more
2. Jangam Maf (Rajni) Caste Building
3. Visitation of Remonstrance Maf
4. Visitation of Remonstrance Maf
5. Visitation of Remonstrance Maf
6. Visitation of Remonstrance Maf
7. Visitation of Remonstrance Maf
8. Visitation of Remonstrance Maf
9. Visitation of Remonstrance Maf
10. Visitation of Remonstrance Maf
11. Visitation of Remonstrance Maf
12. Visitation of Remonstrance Maf
13. Visitation of Remonstrance Maf
14. Visitation of Remonstrance Maf
15. Visitation of Remonstrance Maf
16. Visitation of Remonstrance Maf
17. Visitation of Remonstrance Maf
18. Visitation of Remonstrance Maf
19. Visitation of Remonstrance Maf
20. Visitation of Remonstrance Maf
21. Visitation of Remonstrance Maf
22. Visitation of Remonstrance Maf
23. Visitation of Remonstrance Maf
24. Visitation of Remonstrance Maf
25. Visitation of Remonstrance Maf
26. Visitation of Remonstrance Maf
27. Visitation of Remonstrance Maf
28. Visitation of Remonstrance Maf
29. Visitation of Remonstrance Maf
30. Visitation of Remonstrance Maf

